



# 9225 NE Turing Court

(formerly 20175 NW AmberGlen Court)

FOR LEASE



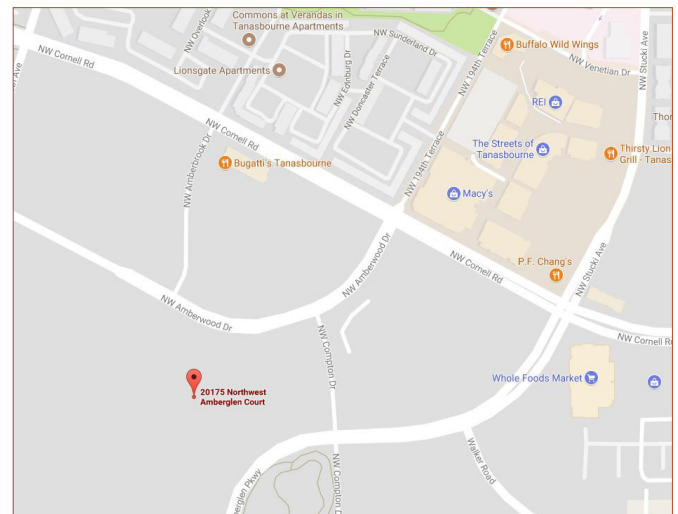
The 9225 Building is a one-story Class B flex building combining classic and contemporary elements to create a business environment in which tenants enjoy solid quality and technical innovation.

**\$14.40/SF NNN**

- Park-like setting
- Property manager on site
- Easy access to Highway 26
- 3.6:1,000 parking

## AVAILABILITIES

SUITE 100 - 58,283 SF



JOHN MEDAK  
503 542 5898  
john.medak@colliers.com

JENNIFER MEDAK  
503 542 5899  
jennifer.medak@colliers.com

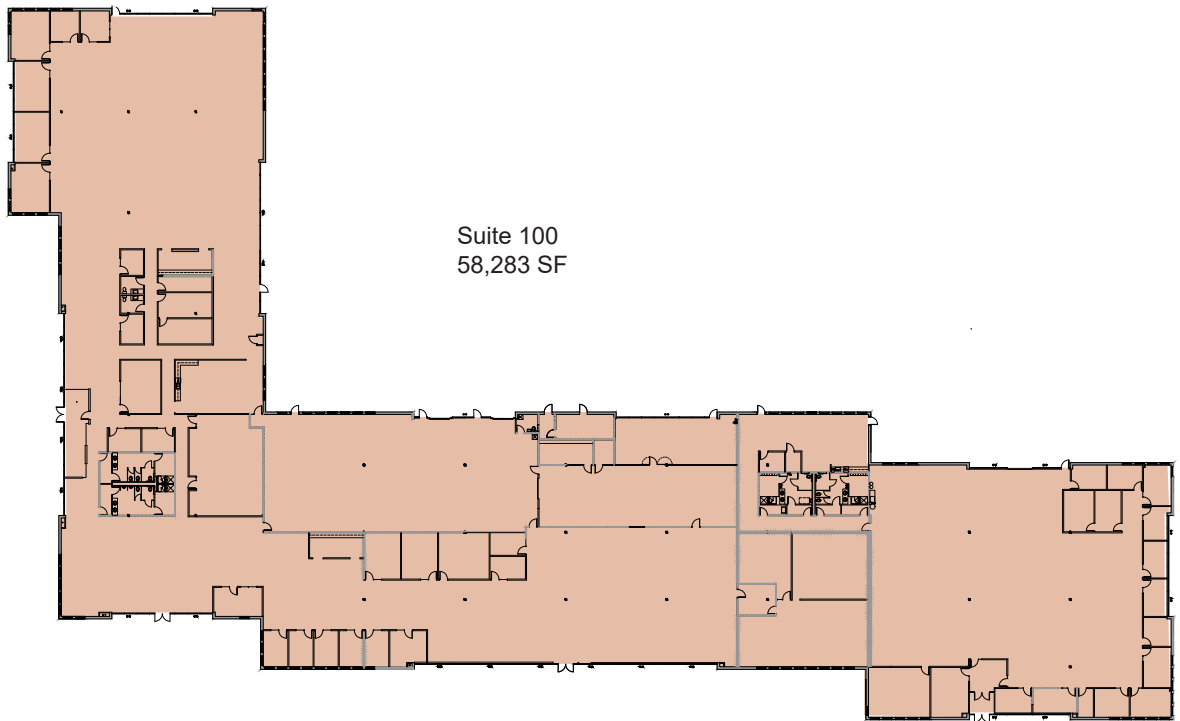
MIKE THOMAS  
503 499 0059  
mike.thomas@colliers.com





9225 NE Turing Court

FOR LEASE



JOHN MEDAK  
503 542 5898  
[john.medak@colliers.com](mailto:john.medak@colliers.com)

JENNIFER MEDAK  
503 542 5899  
[jennifer.medak@colliers.com](mailto:jennifer.medak@colliers.com)

MIKE THOMAS  
503 499 0059  
[mike.thomas@colliers.com](mailto:mike.thomas@colliers.com)

