



9225 NE Turing Court

(formerly 20175 NW AmberGlen Court)

FOR LEASE



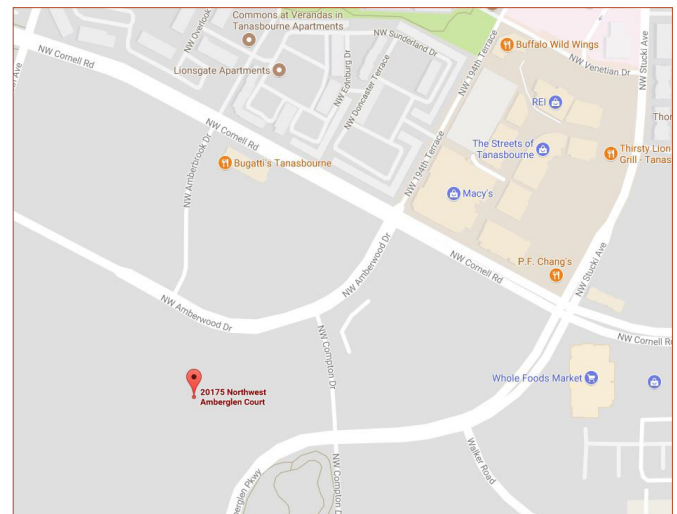
The 9225 Building is a one-story Class B flex building combining classic and contemporary elements to create a business environment in which tenants enjoy solid quality and technical innovation.

\$15.00/SF NNN

- Park-like setting
- Property manager on site
- Easy access to Highway 26
- 3.6:1,000 parking

AVAILABILITIES

SUITE 100 - 58,283 SF



JOHN MEDAK
503 542 5898
john.medak@colliers.com

JENNIFER MEDAK
503 542 5899
jennifer.medak@colliers.com

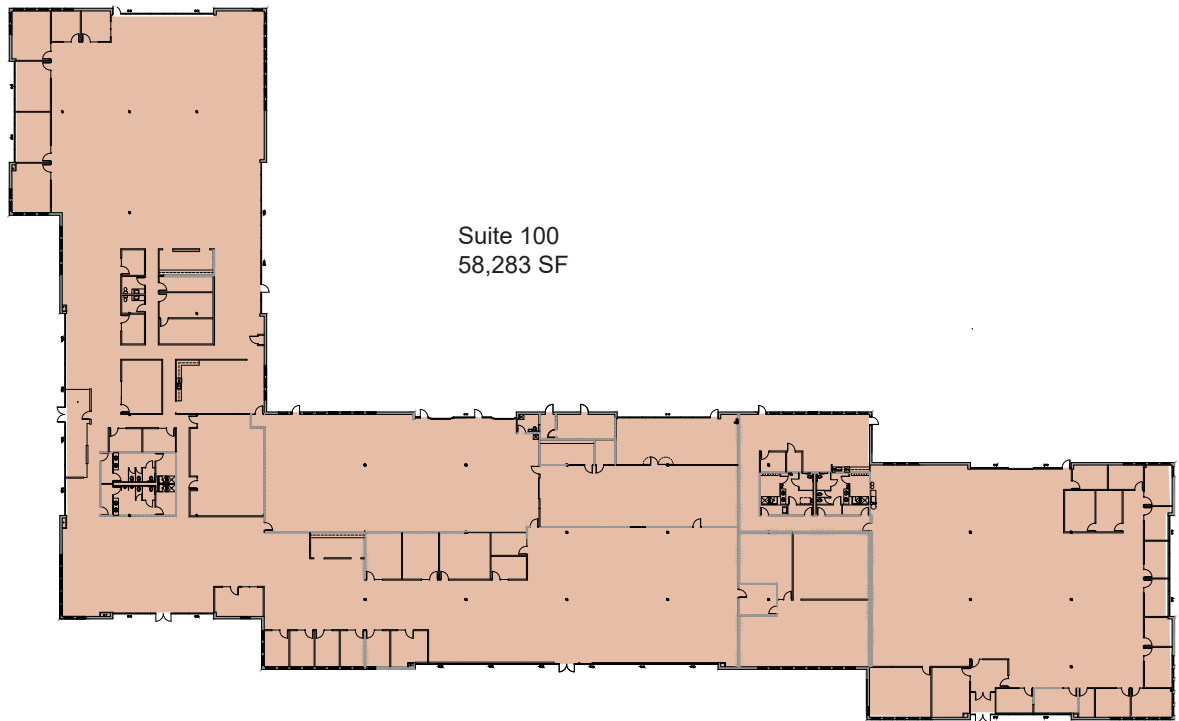
MIKE THOMAS
503 499 0059
mike.thomas@colliers.com





9225 NE Turing Court

FOR LEASE



Suite 100
58,283 SF



JOHN MEDAK
503 542 5898
john.medak@colliers.com

JENNIFER MEDAK
503 542 5899
jennifer.medak@colliers.com

MIKE THOMAS
503 499 0059
mike.thomas@colliers.com

