



**FOR
LEASE**

Seattle South Business Park, Bldg 8

18290B Andover Park West | Tukwila, WA



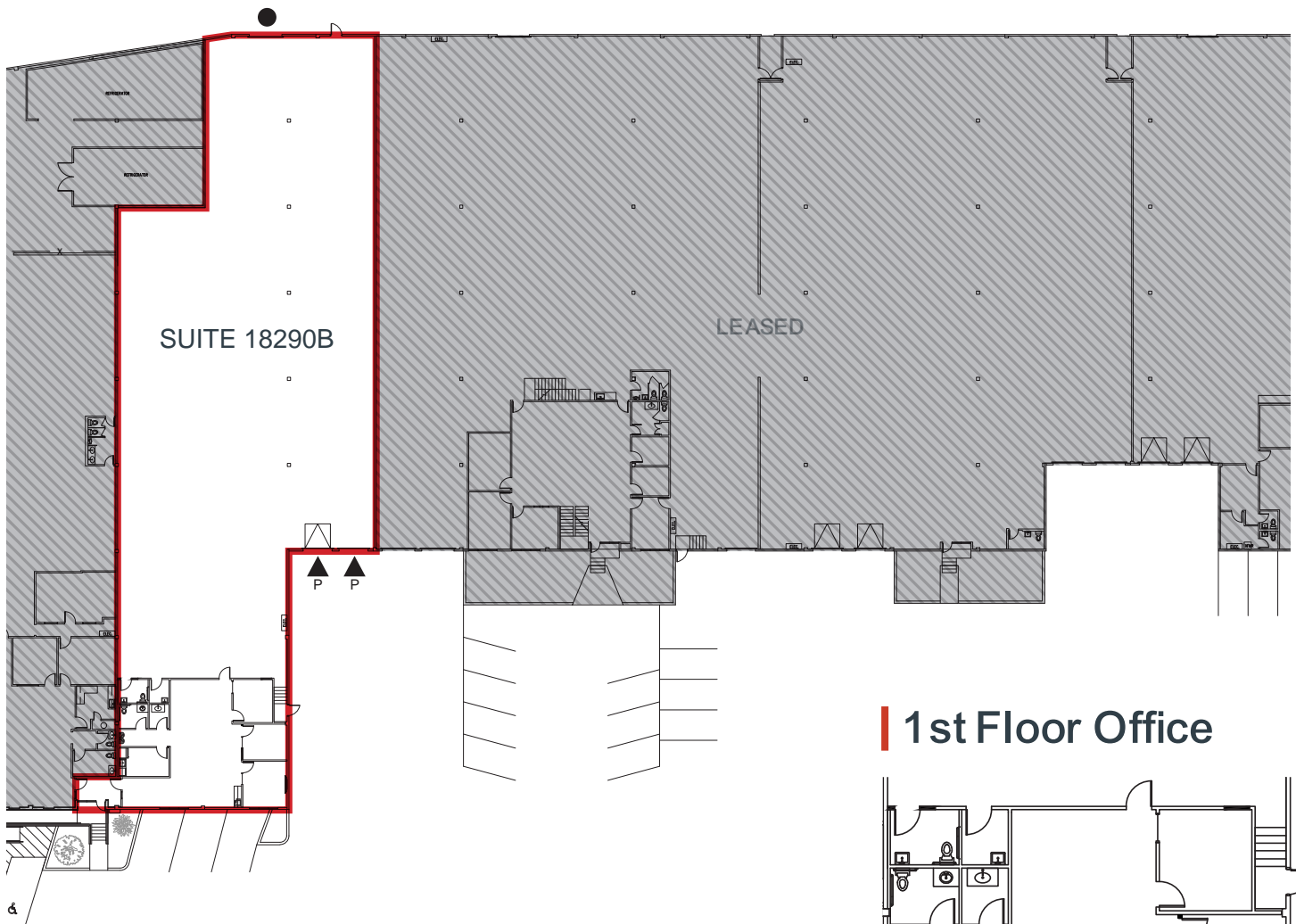
12,440 Square Feet Available

- 1,648 SF office
- 2 dock high doors with pit levelers
- 1 drive in door
- 28' clear height
- 200 amps
- LED lighting
- Sprinkler: Wet system
- Column spacing: 48' x 24'
- Space dimensions: 216' x 72'

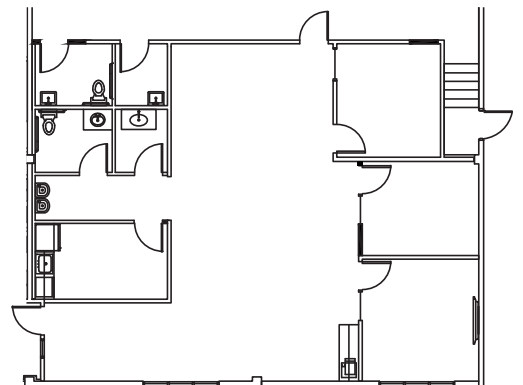
Seattle South Business Park, Building 8

18290B Andover Park West | Tukwila, WA

Suite 18290B Floor Plan



1st Floor Office



LEGEND:

- ▲ DOCK HIGH DOOR W/ PIT LEVELER
- P
- DRIVE IN DOOR



For more information on this opportunity, please contact



Matt McGregor, SIOR
+1 206 624 7401
matt.mcgregor@colliers.com

Bill Condon, SIOR
+1 206 235 9732
bill.condon@colliers.com

This information contained herein was obtained from sources deemed reliable and is believed to be true. It has not been verified and as such, cannot be warranted nor form any part of any future contract.