

FOR LEASE >

1005 Terminal Way

RENO | NEVADA



AVAILABLE SPACE FROM 467 SF UP TO 6,698 SF

Suite 140:	704 sf	Suite 190:	1,739 sf	Suite 246:	924 sf
Suite 170:	896 sf*	Suite 202:	3,663 sf*	Suite 259:	832 sf
Suite 172:	1,410 sf*	Suite 220:	2,568 sf*	Suite 262:	545 sf

*Possible combination options, see suite floor plans for details

BUILDING DETAILS

- > Great value price point for users in the Airport Submarket
- > Several recently completed improvements
- > Common conference room, break area, and lobby available to all tenants
- > Wide variety of suite sizes and configurations available
- > Rate includes operating expenses, and utilities
- > AT&T and Charter Spectrum available at this property
- > Lush landscaping surrounding the building

LEASE PRICE: \$0.99/sf/mo Full Service
(Introductory rate for first six months of lease term)

For more information,
please contact:

Reno Office Services

LANDON GONZALEZ

Senior Associate

+1 775 823 4663 DIRECT

+1 775 741 6397 CELL

Landon.Gonzalez@colliers.com

The information furnished has been obtained from sources we deem reliable and is submitted subject to errors, omissions and changes. Although Colliers Nevada, LLC has no reason to doubt its accuracy, we do not guarantee it. All information should be verified by the recipient prior to lease, purchase, exchange or execution of legal documents.

Colliers International
5520 Kietzke Lane, Suite 300
Reno, Nevada 8511
P: 775.823.9666 | F: 775.823.4699
www.colliers.com/reno

FOR LEASE >

1005 Terminal Way

RENO | NEVADA



SITE PLAN



The information furnished has been obtained from sources we deem reliable and is submitted subject to errors, omissions and changes. Although Colliers Nevada, LLC has no reason to doubt its accuracy, we do not guarantee it. All information should be verified by the recipient prior to lease, purchase, exchange or execution of legal documents.

Colliers International
5520 Kietzke Lane, Suite 300
Reno, Nevada 8511
P: 775.823.9666 | F: 775.823.4699
www.colliers.com/reno

FOR LEASE >

1005 Terminal Way

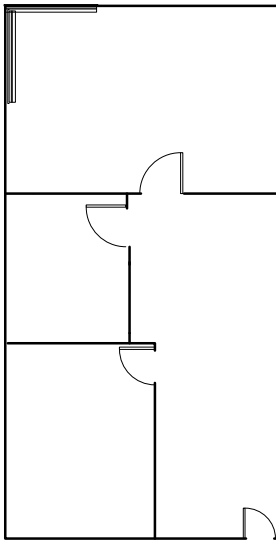
RENO | NEVADA



FLOOR PLANS - NOT TO SCALE

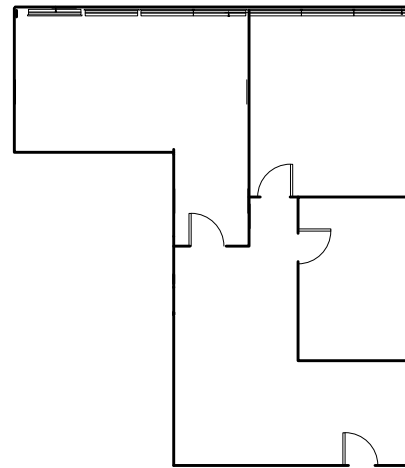
SUITE 140 - 704 SF

Layout features private offices, and entry/reception area. (Available 11/1/18)



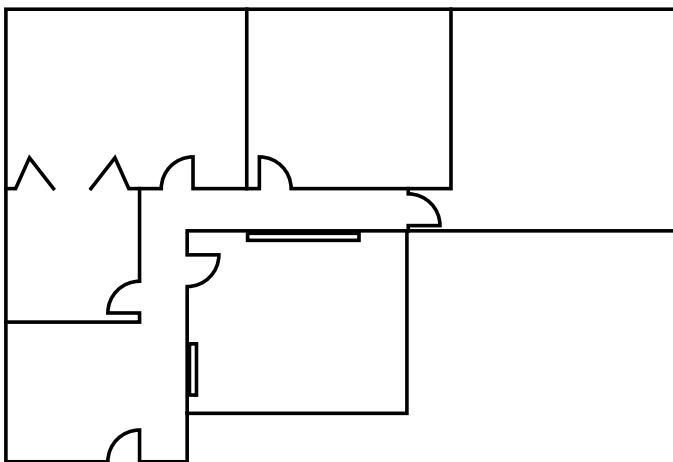
SUITE 170 - 896 SF

Layout includes reception/lobby/workspace with private offices and storage. Can be combined with suite 172 for a total of 2,306 SF.



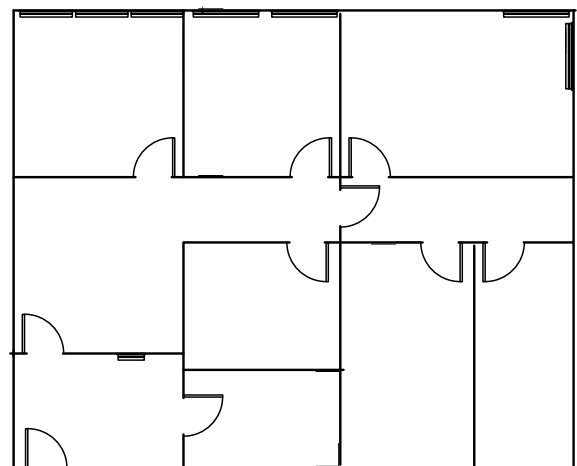
SUITE 172 - 1,410 SF

Layout includes reception/lobby with private offices, and conference room. Can be combined with suite 170 for a total of 2,306 SF.



SUITE 190 - 1,739 SF

Layout includes reception/lobby with private offices, conference room, and storage.



FOR LEASE >

1005 Terminal Way

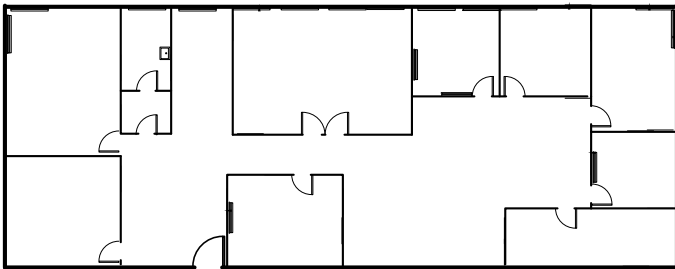
RENO | NEVADA



FLOOR PLANS - NOT TO SCALE

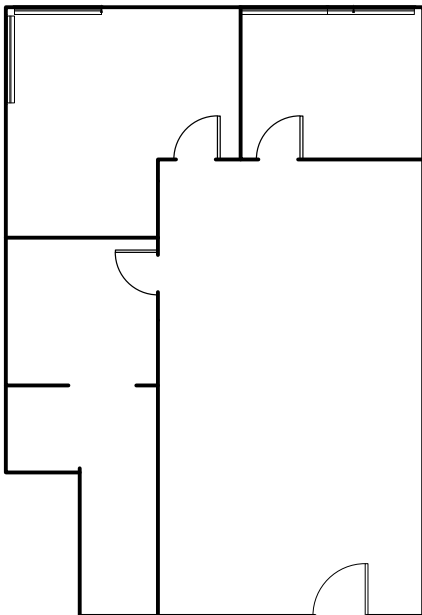
SUITE 202 - 3,663 SF

Layout includes open workspace, several private offices, conference room, storage, and break area with plumbing. Can be combined with suites 220 and 242 for a total of 6,698 SF.



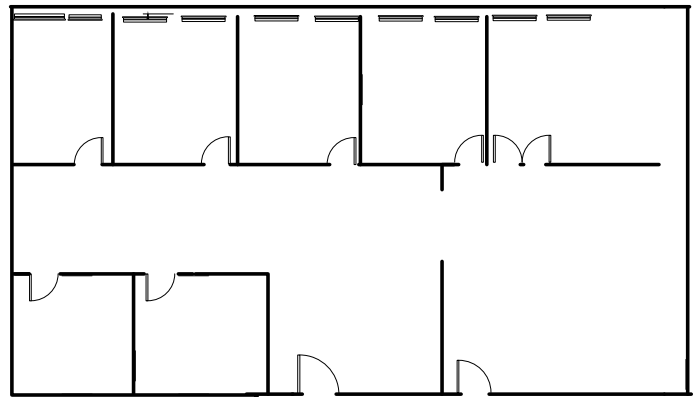
SUITE 246 - 924 SF

Layout includes open workspace, private offices, and storage.



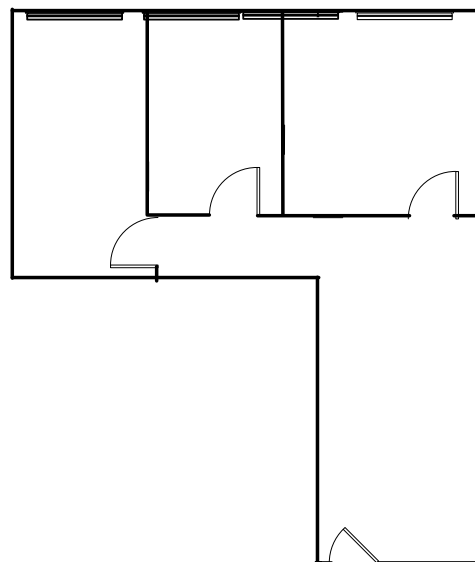
SUITE 220 - 2,568 SF

Layout includes open workspace, several private offices, conference room. Can be combined with suites 202 and 242 for a total of 6,698 SF.



SUITE 259 - 832 SF

Layout includes reception/lobby with private offices and storage.



The information furnished has been obtained from sources we deem reliable and is submitted subject to errors, omissions and changes. Although Colliers Nevada, LLC has no reason to doubt its accuracy, we do not guarantee it. All information should be verified by the recipient prior to lease, purchase, exchange or execution of legal documents.

Colliers International
5520 Kietzke Lane, Suite 300
Reno, Nevada 8511
P: 775.823.9666 | F: 775.823.4699
www.colliers.com/reno

FOR LEASE >

1005 Terminal Way

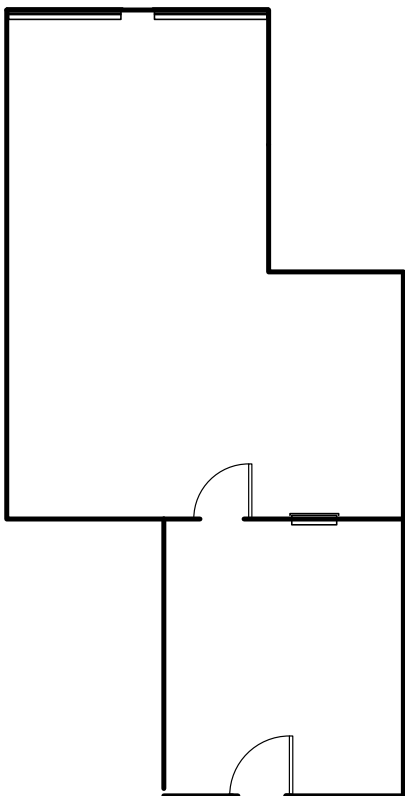
RENO | NEVADA



FLOOR PLANS - NOT TO SCALE

SUITE 262 - 545 SF

Layout includes reception/lobby with large private office.



The information furnished has been obtained from sources we deem reliable and is submitted subject to errors, omissions and changes. Although Colliers Nevada, LLC has no reason to doubt its accuracy, we do not guarantee it. All information should be verified by the recipient prior to lease, purchase, exchange or execution of legal documents.

Colliers International
5520 Kietzke Lane, Suite 300
Reno, Nevada 8511
P: 775.823.9666 | F: 775.823.4699
www.colliers.com/reno

FOR LEASE >

1005 Terminal Way

RENO | NEVADA



ADDITIONAL PROPERTY PHOTOS



The information furnished has been obtained from sources we deem reliable and is submitted subject to errors, omissions and changes. Although Colliers Nevada, LLC has no reason to doubt its accuracy, we do not guarantee it. All information should be verified by the recipient prior to lease, purchase, exchange or execution of legal documents.

Colliers International
5520 Kietzke Lane, Suite 300
Reno, Nevada 8511
P: 775.823.9666 | F: 775.823.4699
www.colliers.com/reno

FOR LEASE >

1005 Terminal Way

RENO | NEVADA



AERIAL MAP



For more information,
please contact:

Reno Office Services

LONDON GONZALEZ

Senior Associate

+1 775 823 4663 DIRECT

+1 775 741 6397 CELL

Landon.Gonzalez@colliers.com

The information furnished has been obtained from sources we deem reliable and is submitted subject to errors, omissions and changes. Although Colliers Nevada, LLC has no reason to doubt its accuracy, we do not guarantee it. All information should be verified by the recipient prior to lease, purchase, exchange or execution of legal documents.

Colliers International
5520 Kietzke Lane, Suite 300
Reno, Nevada 8511
P: 775.823.9666 | F: 775.823.4699
www.colliers.com/reno