

RETAIL SPACE FOR LEASE > HIGHWAY 153 NEAR HWY 81



Powdersville Retail

3525 HWY 153, PIEDMONT, SOUTH CAROLINA 29673



Prime Retail Space For Lease > Hwy 153

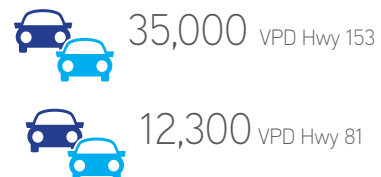
- > Available: $\pm 5,307$ SF
- > Subdividable ($\pm 2,289$ SF and $\pm 3,018$ SF)
- > Located in the heart of Powdersville retail corridor
- > Situated near the intersection of Hwy 153 and Hwy 81
- > LEASE RATE: \$17/SF NNN

*Contact broker for more information

Demographics⁽²⁰¹⁷⁾

	1-MILE	3-MILE	5-MILE
POPULATION	980	14,305	62,402
AVERAGE HH INCOME	\$90,062	\$61,126	\$56,954

Traffic Counts⁽²⁰¹⁶⁾



LYN TYNER
864 527 5431 DIRECT
864 297 4950 MAIN
lyn.tyner@colliers.com

SCOTT BURGESS
864 527 5434 DIRECT
864 297 4950 MAIN
scott.burgess@colliers.com

LANCE BYARS
864 527 5404 DIRECT
864 297 4950 MAIN
lance.byars@colliers.com

COLLIERS INTERNATIONAL
55 E. Camperdown Way, Suite 200
Greenville, South Carolina 29601
www.colliers.com/southcarolina



Contact Us

LYN TYNER

864 527 5431 DIRECT

864 297 4950 MAIN

lyn.tyner@colliers.com

SCOTT BURGESS

864 527 5434 DIRECT

864 297 4950 MAIN

scott.burgess@colliers.com

LANCE BYARS

864 527 5404 DIRECT

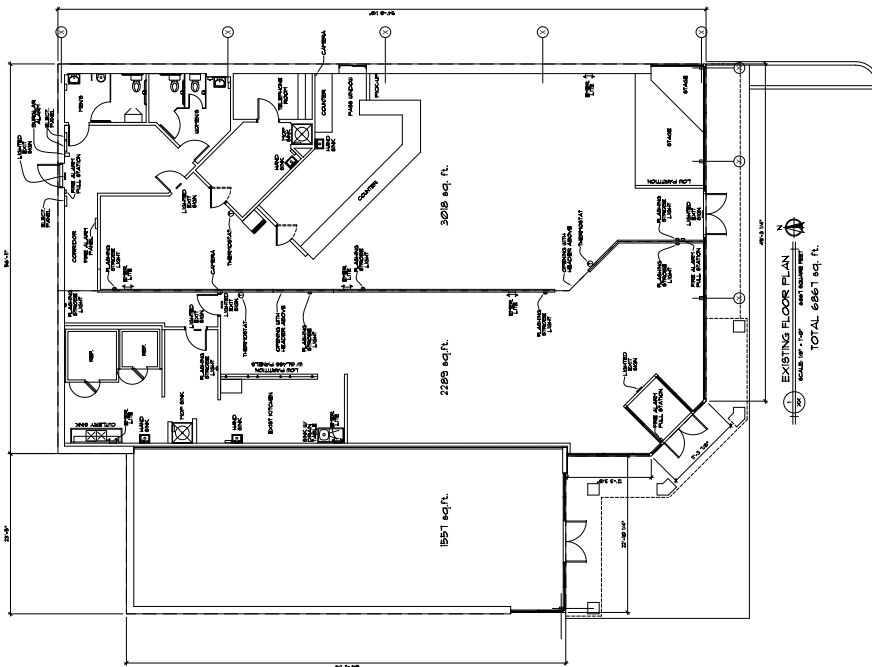
864 297 4950 MAIN

lance.byars@colliers.com

COLLIERS INTERNATIONAL

55 E. Camperdown Way, Suite 200
Greenville, South Carolina 29601

www.colliers.com



This document has been prepared by Colliers International for advertising and general information only. Colliers International makes no guarantees, representations or warranties of any kind, expressed or implied, regarding the information including, but not limited to, warranties of content, accuracy and reliability. Any interested party should undertake their own inquiries as to the accuracy of the information. Colliers International excludes unequivocally all inferred or implied terms, conditions and warranties arising out of this document and excludes all liability for loss and damages arising there from. This publication is the copyrighted property of Colliers International and/or its licensor(s). ©2016. All rights reserved.

