

FOR LEASE > 0.40± ACRES / 17,000± SF STORAGE YARD

Preston/Naylor Business Park

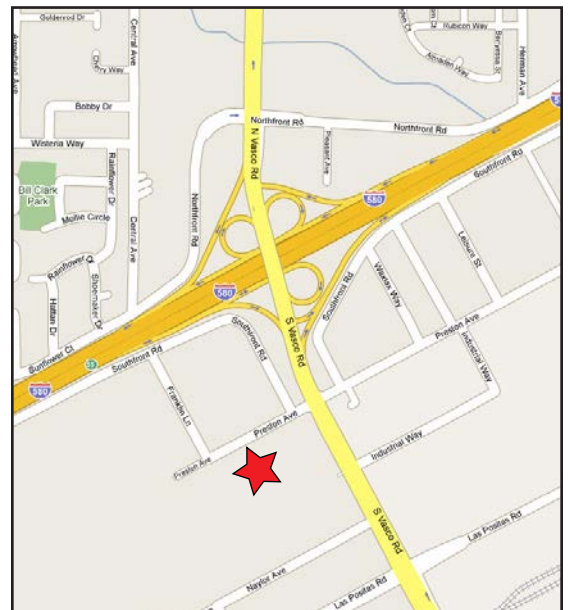
5751 PRESTON AVENUE, LIVERMORE, CA



Features:

- > Approximately 17,000 square feet
- > Zoned I-3 City of Livermore
- > Gated/secured
- > After hours key card access
- > Easy access to I-580
- > The Preston/Naylor Business Park provides a certified truck/auto wash facility for occupants of the park.
- > Asking \$0.25 psf

The information furnished has been obtained from sources we deem reliable and is submitted subject to errors, omissions and changes. Although Colliers International has no reason to doubt its accuracy, we do not guarantee it. All information should be verified by the recipient prior to lease, purchase, exchange, or execution of legal documents. © 2017 Colliers International



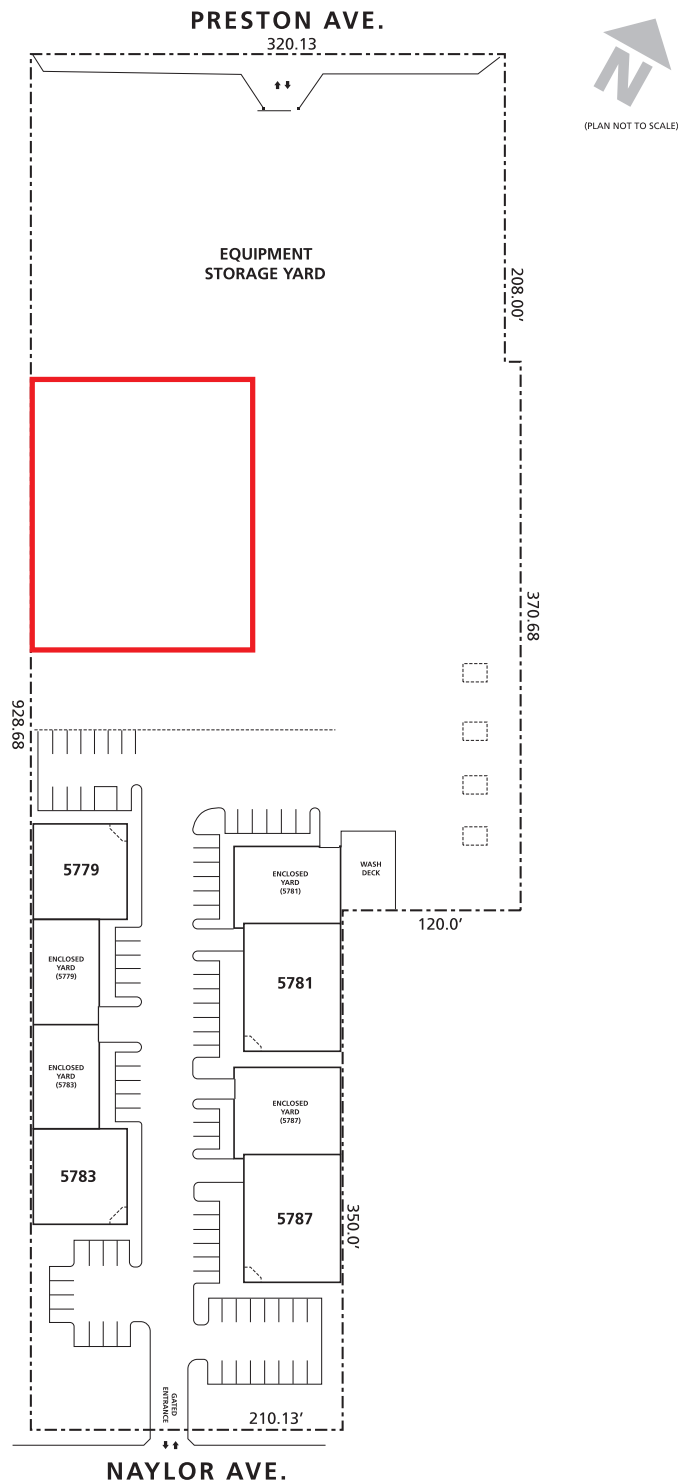
MIKE DONNELLY, SIOR
+1 925 227 6241
michael.donnely@colliers.com
CA License No. 01402626

COLLIERS INTERNATIONAL
3825 Hopyard Road, Suite 195
Pleasanton, CA 94588
www.colliers.com

FOR LEASE > 0.40± ACRES / 17,000± SF STORAGE YARD

Preston/Naylor Business Park

5751 PRESTON AVENUE, LIVERMORE, CA



MIKE DONNELLY, SIOR
+1 925 227 6241
michael.donnelly@colliers.com
CA License No. 01402626

COLLIERS INTERNATIONAL
3825 Hopyard Road, Suite 195
Pleasanton, CA 94588
www.colliers.com

FOR LEASE > 0.40± ACRES / 17,000± SF STORAGE YARD

Preston/Naylor Business Park

5751 PRESTON AVENUE, LIVERMORE, CA



MIKE DONNELLY, SIOR
+1 925 227 6241
michael.donnelly@colliers.com
CA License No. 01402626

COLLIERS INTERNATIONAL
3825 Hopyard Road, Suite 195
Pleasanton, CA 94588
www.colliers.com