

FOR LEASE

[colliers.com/centralflorida](http://colliers.com/centralflorida)  VIEW ONLINE

# Mayflower Center

222 South Westmonte Drive  
ALTAMONTE SPRINGS | FL

*Recently  
Renovated* / *Outstanding  
Accessibility*

Newly-renovated three-story  
office building offering a tranquil  
feel with an open air atrium

MAYFLOWER  
CENTER



Colliers International  
255 South Orange Avenue | Suite 1300  
Orlando, FL 32801  
P: 407 843 1723

**Colin Morrison**  
Senior Associate  
407 362 6153  
[colin.morrison@colliers.com](mailto:colin.morrison@colliers.com)

**A. Todd Davis, SIOR, CCIM**  
Executive Managing Director  
407 362 6121  
[todd.davis@colliers.com](mailto:todd.davis@colliers.com)

**Robert Kellogg, CCIM**  
Executive Managing Director  
407 362 6163  
[robert.kellogg@colliers.com](mailto:robert.kellogg@colliers.com)





Located in the heart of Altamonte Springs with superior ease-of- access to I-4

Easy access being positioned just off State Road 436 and with access to I-4 in under a minute. Within a mile of over 500 hotel rooms, 1,000 condo units, and a wide selection of restaurants and shops.

## NEW RENOVATIONS

- Replaced building cooling tower to improve the efficiency for the overall building
- All common area restrooms have been completely remodeled and updated with the newest designs and materials along with all water-efficient hardware
- Interior courtyard updated with new flooring, tables, umbrellas and chairs to provide a relaxing area for tenants to work outside, take a break or enjoy their lunch time
- All common area stairwells have been replaced
- Elevators under renovation with completion set for first quarter 2018





**PROPERTY HIGHLIGHTS**

- Three-story Class B open-atrium style office building totaling 67,462± RSF
- Approximately 270 parking spaces offering 4 spaces per 1,000 RSF - can accomodate higher parking requirements
- Superior ease-of-access – less than a minute drive to Interstate 4 and under five minutes to the heart of Maitland Center
- Move-in ready suites available

**AVAILABILITY**

Suite	Available Space (SF)	Date Available
100/102	4,643	Now
103/105	2,646	Now
106	1,310	Now
108	1,336	Now
110	1,398	Now
112/114	2,788	Now
203	1,559	Now
204	976	Now
205*	1,522	Now
206B*	1,090	Now
207*	1,178	Now
207B	450	Now
209	1,424	Now
210/212/215	5,661	Now
213	1,819	Now
301-315	14,144	Now
317	2,226	Now

\* Move-in ready



450 to 16,370 SF Available / \$15.00 SF Full Service





**Colin Morrison**  
Senior Associate  
407 362 6153  
colin.morrison@colliers.com

**A. Todd Davis, SIOR, CCIM**  
Executive Managing Director  
407 362 6121  
todd.davis@colliers.com

**Robert Kellogg, CCIM**  
Executive Managing Director  
407 362 6163  
robert.kellogg@colliers.com

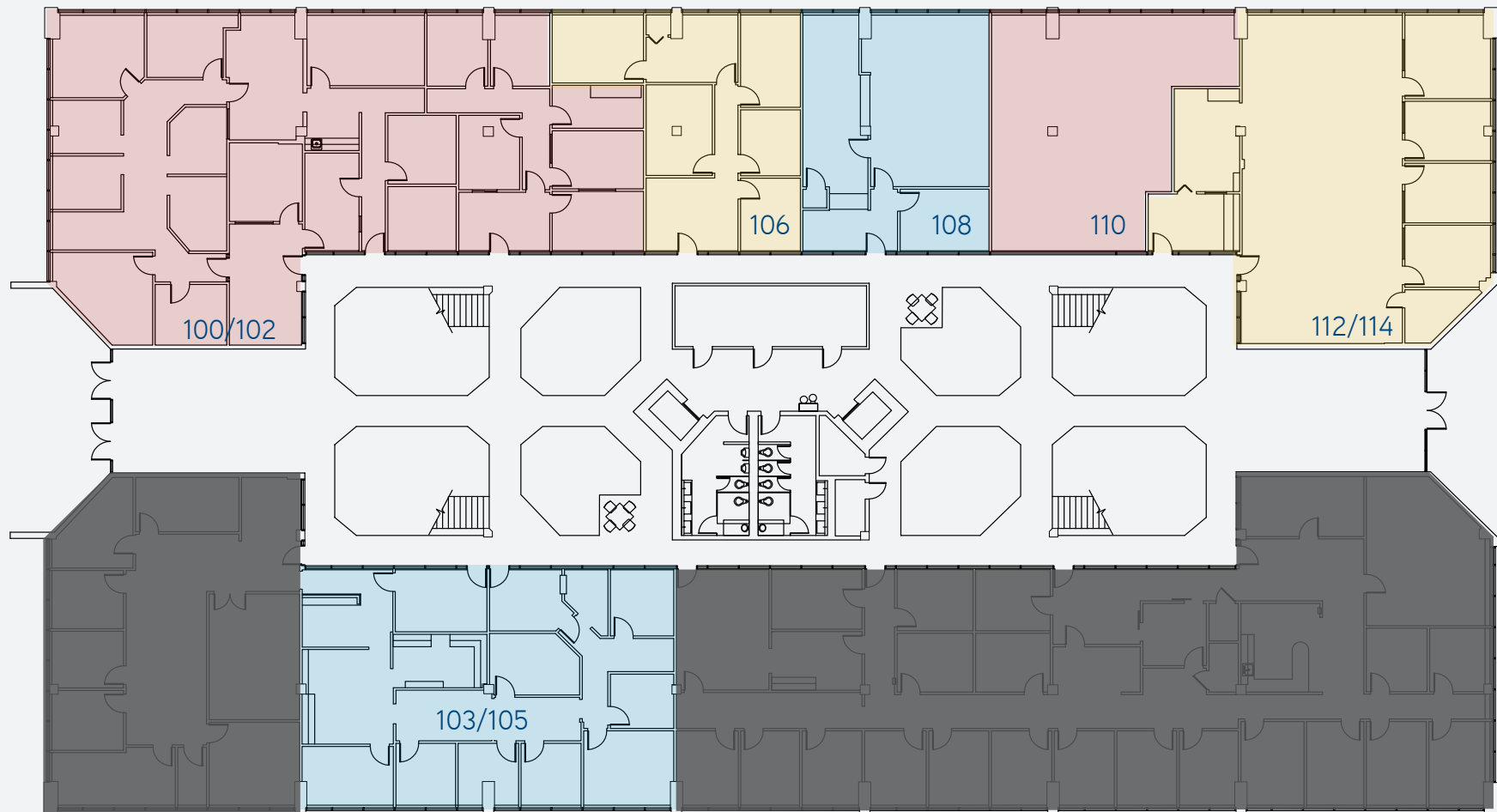
This document has been prepared by Colliers International for advertising and general information only. Colliers International makes no guarantees, representations or warranties of any kind, expressed or implied, regarding the information including, but not limited to, warranties of content, accuracy and reliability. Any interested party should undertake their own inquiries as to the accuracy of the information. Colliers International excludes unequivocally all inferred or implied terms, conditions and warranties arising out of this document and excludes all liability for loss and damages arising there from. This publication is the copyrighted property of Colliers International and/or its licensor(s). ©2017. All rights reserved.

Colliers International  
255 South Orange Avenue | Suite 1300  
Orlando, FL 32801  
P: 407 843 1723





## FLOOR PLAN



### FIRST FLOOR AVAILABILITY - *CONTIGUOUS SPACES FROM 1,310 - 11,475 SF*

- Suite 100/102 - 4,643± SF
- Suite 103/105 - 2,646

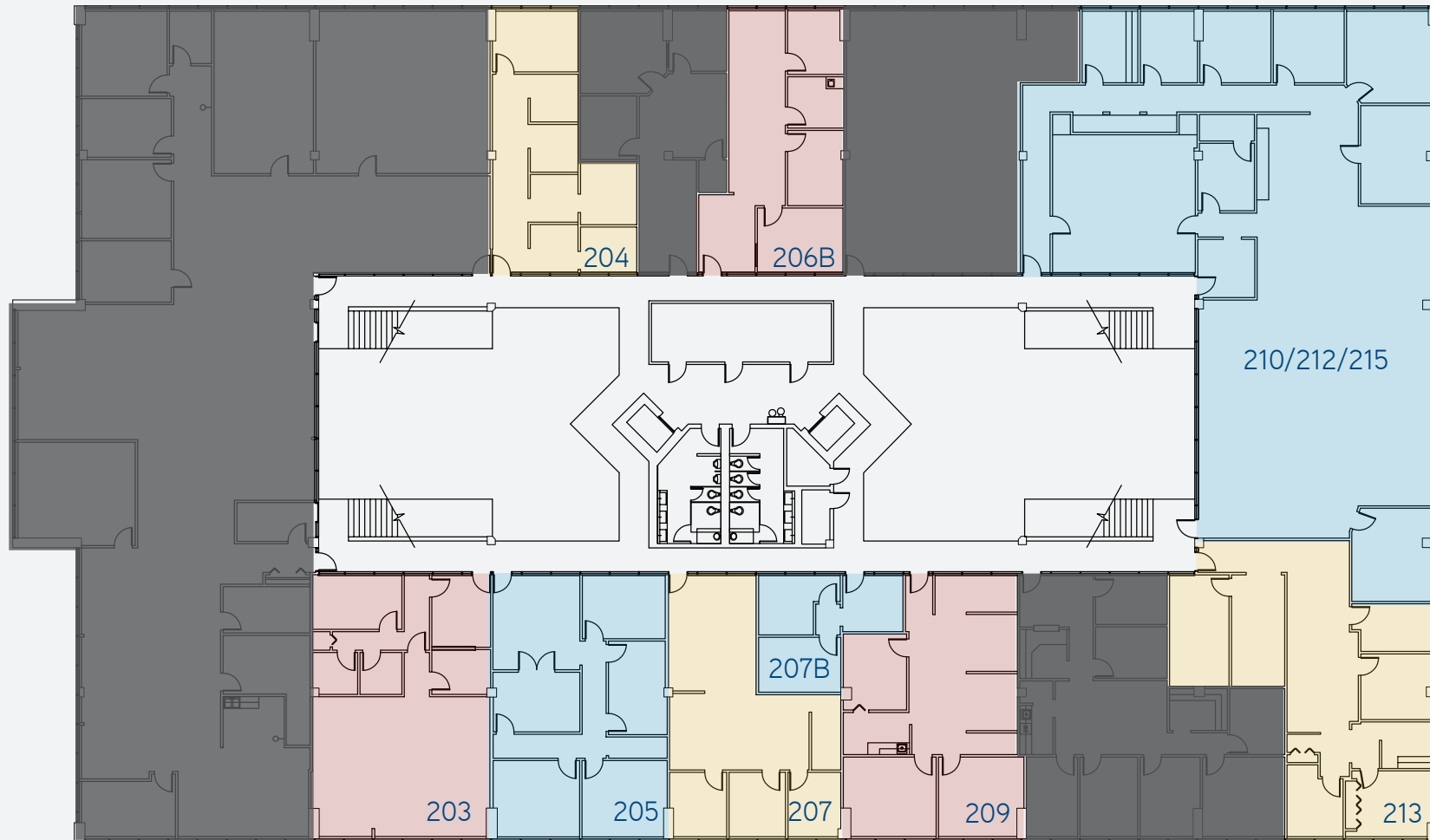
- Suite 106 - 1,310± SF
- Suite 108- 1,336± SF

- Suite 110 - 1,398± SF
- Suite 112/114- 2,788± SF

■ - Leased



## FLOOR PLAN



### SECOND FLOOR AVAILABILITY - CONTIGUOUS SPACES FROM 450 - 7,480 SF

• Suite 203 - 1,559± SF

• Suite 204 - 976± SF

• Suite 205 - 1,522± SF\*

• Suite 206B - 1,090± SF\*

• Suite 207 - 1,178± SF\*

• Suite 207B - 450± SF

• Suite 209 - 1,424± SF

• Suite 210/212/215 - 5,661± SF

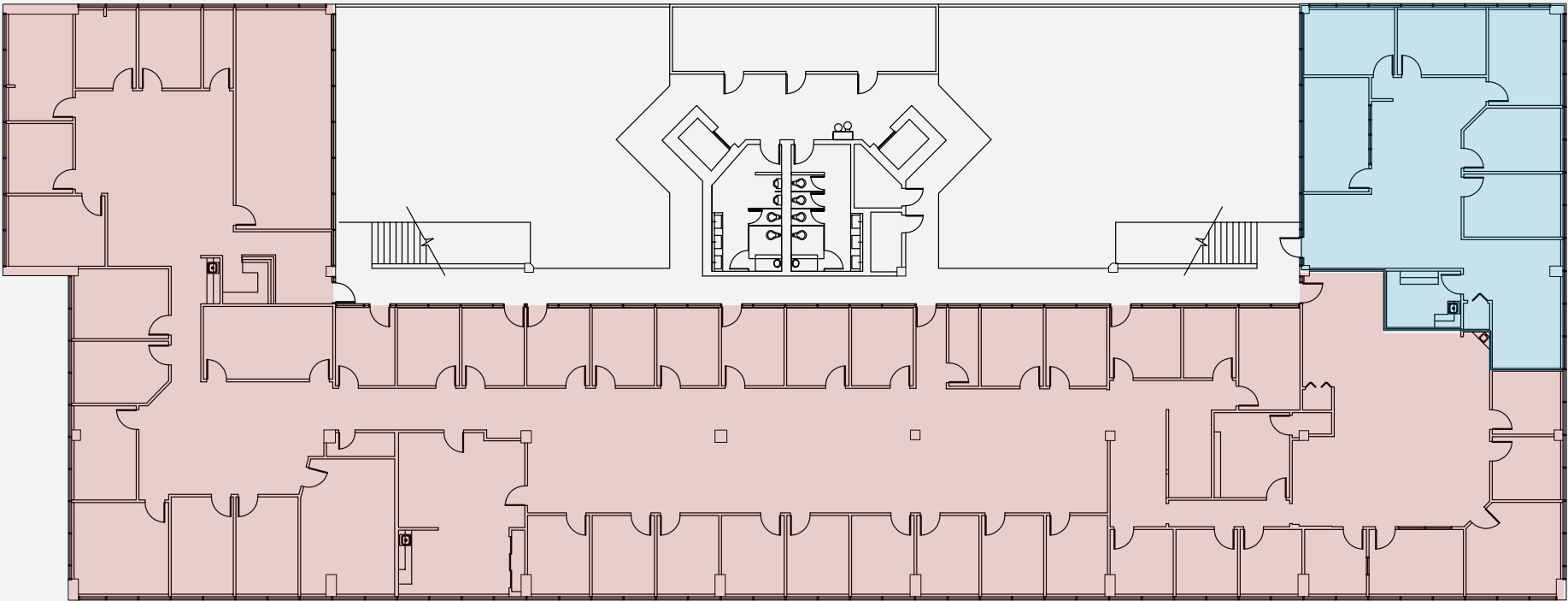
• Suite 213 - 1,819± SF

■ - Leased

\* Move-in ready



FLOOR PLAN



THIRD FLOOR AVAILABILITY - *CONTIGUOUS SPACES FROM 2,226 - 16,370 SF*

- Suite 301-315 - 14,144± SF
- Suite 317- 2,226± SF

■ - Leased