

FOR LEASE

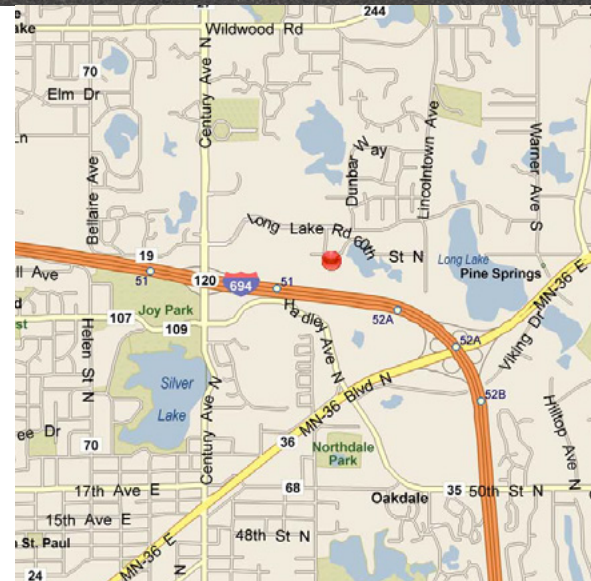
3050 Echo Lake Avenue

MAHTOMEDI, MINNESOTA



Building Amenities

- › Multiple spaces available
- › Abundant glass line
- › Excellent corporate image
- › Ample surface parking
- › Monument signage available
- › Outdoor storage available
- › Relaxing park-like setting
- › Easy access and visibility to I-694



COLLIERS INTERNATIONAL
5985 Rice Creek Parkway, Suite 105
Shoreview, MN 55126

www.colliers.com

JAY CHMIELESKI
952 897 7801 direct
612 275 3772 mobile
jay.c@colliers.com

ERIC RAPP, SIOR
952 897 3060 direct
eric.rapp@colliers.com

3050 Echo Lake Avenue > Aerial



Contact Us

JAY CHMIELESKI
952 897 7801 direct
612 275 3772 mobile
jay.c@colliers.com

ERIC RAPP, SIOR
952 897 3060 direct
eric.rapp@colliers.com

COLLIERS INTERNATIONAL
5985 Rice Creek Parkway, Suite 105
Shoreview, MN 55126
www.colliers.com



PROPERTY FACT SHEET

3050 Echo Lake Avenue

MAHTOMEDI, MINNESOTA



PROPERTY ADDRESS:

3050 Echo Lake Avenue
Mahtomedi, MN 55115

BUILDING SQUARE FEET:

117,194 square feet

CLEAR HEIGHT:

18' - 26'

CURRENTLY AVAILABLE:

Main Building:

10,000 square feet - office

Out Building:

10,000 square feet - warehouse

NET RENTAL RATES:

\$9.00 per square foot - office

\$4.50 per square foot - warehouse

\$0.50 per square foot - outside storage

2018 EST. CAM & REAL ESTATE TAX:

\$2.15 per square foot CAM

\$1.75 per square foot Tax

\$3.90 total per square foot

AMENITIES:

- Easy access to I-694
- Signage available
- Ample surface parking



For Leasing Information, Contact:

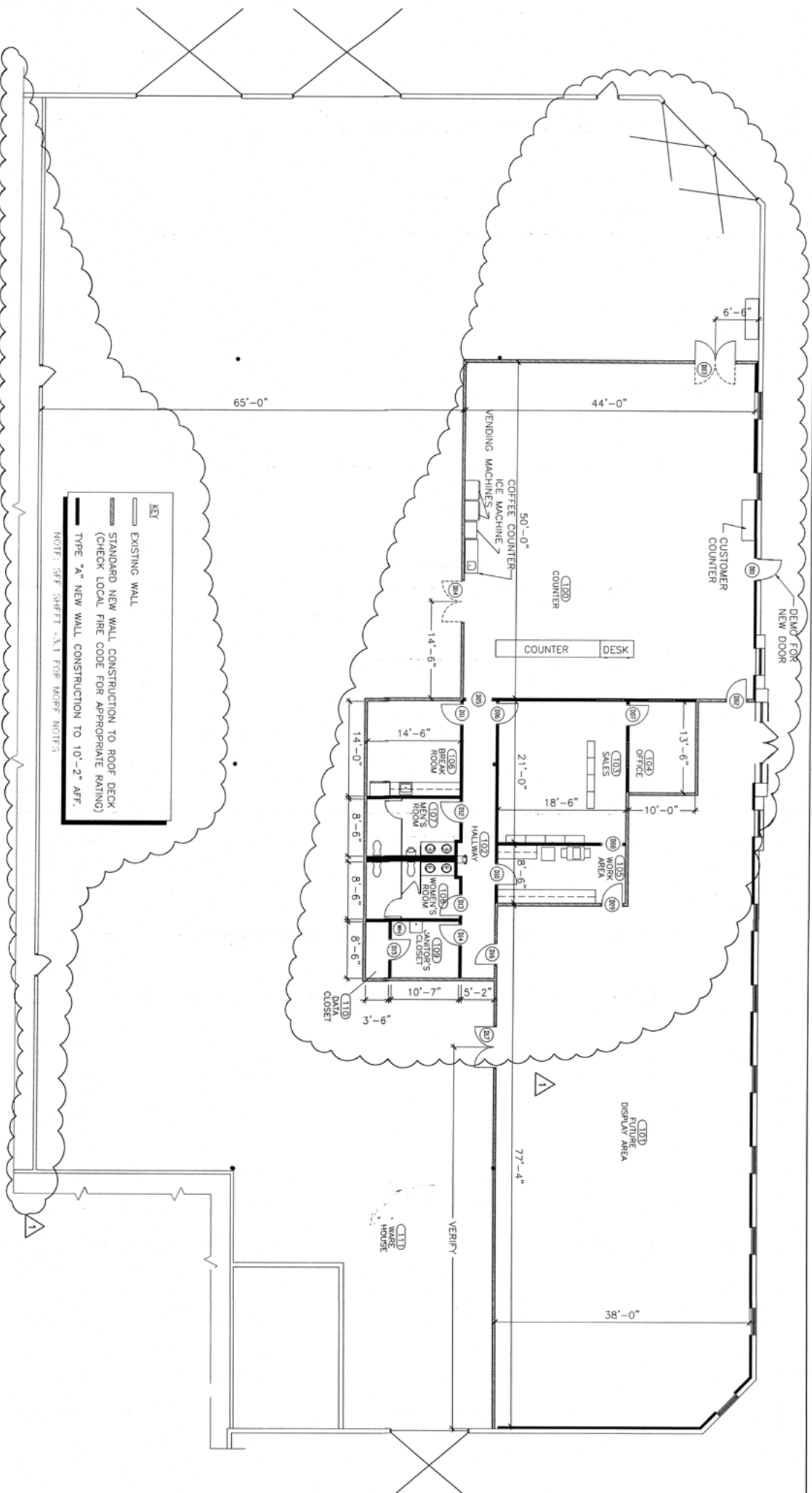
JAY CHMIELESKI
952 897 7801 direct
612 275 3772 mobile
jay.c@colliers.com

ERIC RAPP
952 897 3060 direct
eric.rapp@colliers.com

COLLIERS INTERNATIONAL
5985 Rice Creek Parkway, Suite 105
Shoreview, MN 55126

www.colliers.com

3050 Echo Lake Ave



JAY CHMIELESKI
952 897 7801 direct
612 275 3772 mobile
jay.c@colliers.com

ERIC RAPP
952 897 3060 direct
eric.rapp@colliers.com