

FOR LEASE

466 Whitney Street

SAN LEANDRO, CA



ROBERT "CHET" BARNEY

Senior Vice President
+1 510.433.5811
chet.barney@colliers.com
CA License No. 01111364

JOE YAMIN

Senior Vice President
+1 510.433.5812
joe.yamin@colliers.com
CA License #: 01327666

Executive Summary

- › Total Square Feet: $\pm 5,150$ sq. ft.
- › Office Area: $\pm 1,800$ sq. ft.
- › Two (2) Grade Level Doors
- › Eight (8) Parking Spaces
- › Fenced Shared Yard in Rear
- › Immediate Access of 880 between 98th & Doolittle

Available: March 1, 2018

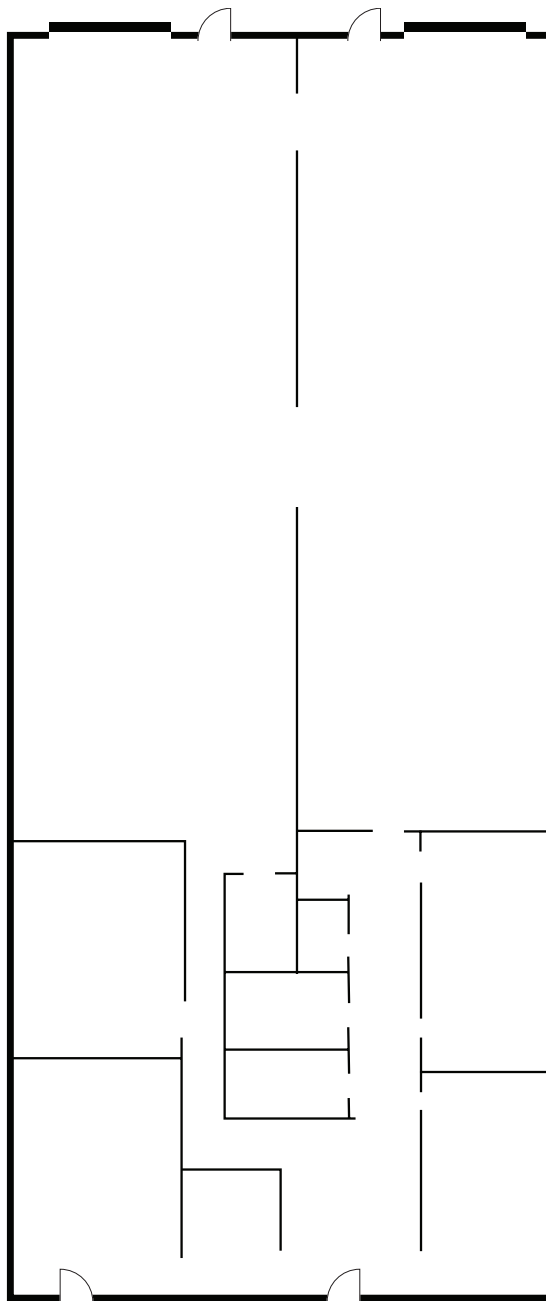
Rent: **\$6,695.00/month Gross (\$1.30/sf/mo Gross)**

Copyright © 2017 Colliers International. Information herein has been obtained from sources deemed reliable, however its accuracy cannot be guaranteed. The user is required to conduct their own due diligence and verification.

FOR LEASE

466 Whitney Street

SAN LEANDRO, CA



This document has been prepared by Colliers International for advertising and general information only. Colliers International makes no guarantees, representations or warranties of any kind, expressed or implied, regarding the information including, but not limited to, warranties of content, accuracy and reliability. Any interested party should undertake their own inquiries as to the accuracy of the information. Colliers International excludes unequivocally all inferred or implied terms, conditions and warranties arising out of this document and excludes all liability for loss and damages arising there from. This publication is the copyrighted property of Colliers International and/or its licensor(s). ©2018. All rights reserved.