



RETAIL SPACE FOR LEASE

BALTIMORE PHASE II

66 | E. BALTIMORE AVENUE
DETROIT, MI

1,500 | Min. Available
SF

8,500 | Max. Available
SF



PROPERTY HIGHLIGHTS

- 1,500 to 8,500 SF of Retail Space Available
- At the 2nd Stop of the Q-Line
- Retail Signage & Visibility on Woodward
- 151 Residential Units Above Retail Space



DEMOGRAPHICS

	1 MILE	3 MILE	5 MILE
POPULATION	13,725	135,000	326,659
AVG. INCOME	\$34,057	\$34,991	\$36,208
HOUSEHOLDS	6,837	58,934	132,247

CONTACT US

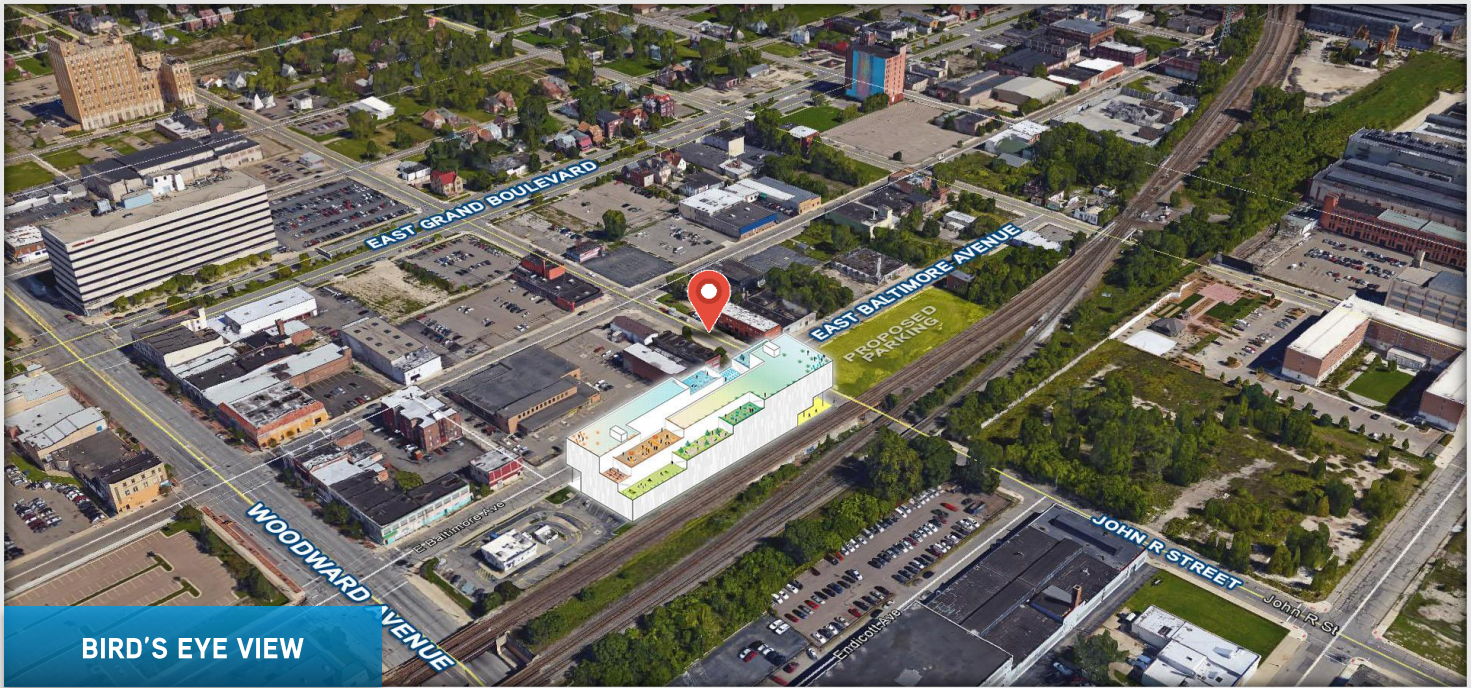
BEN HUBERT
VICE PRESIDENT
PHONE: (248) 540-1000 EXT: 1864
EMAIL: ben.hubert@colliers.com

BEN ROSENZWEIG
VICE PRESIDENT
PHONE: (248) 540-1000 EXT: 1866
EMAIL: ben.rosenzweig@colliers.com

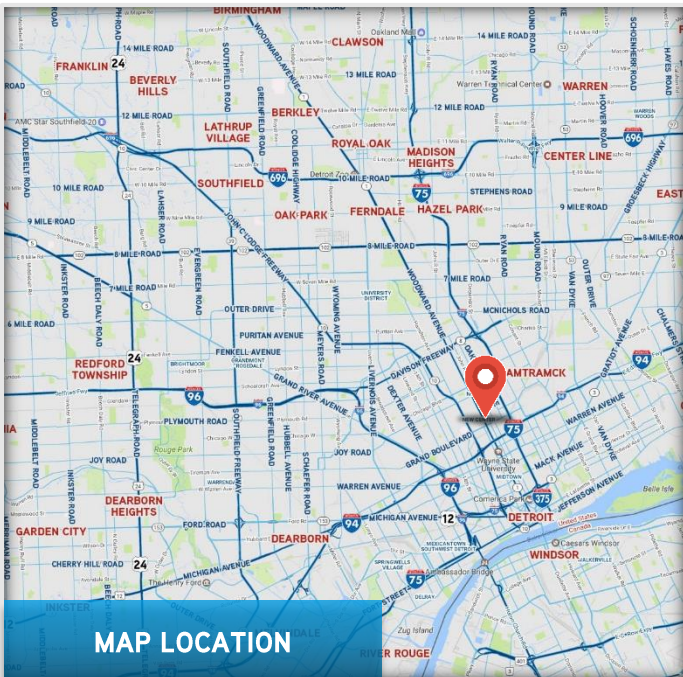
COLLIERS INTERNATIONAL | DETROIT
2 Corporate Drive | Suite 300
Southfield, MI 48076
www.colliers.com/detroit



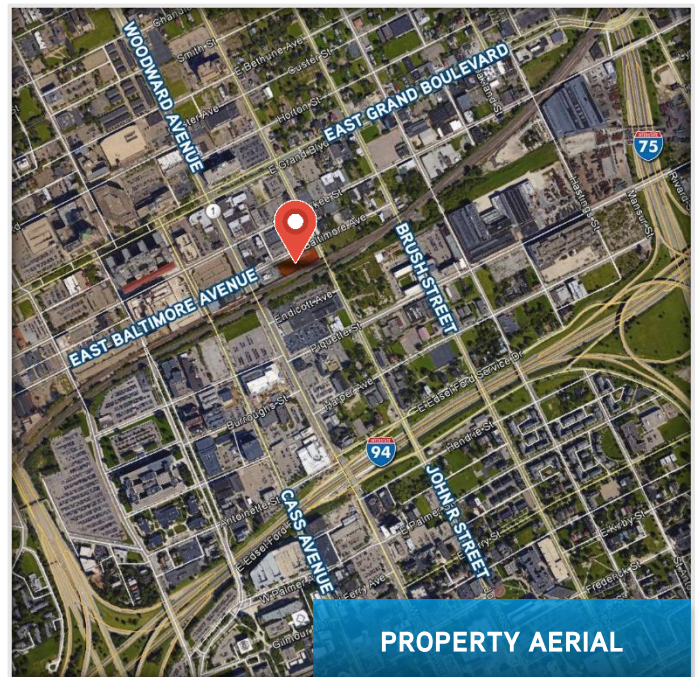
PROPERTY LOCATION



BIRD'S EYE VIEW



MAP LOCATION



PROPERTY AERIAL



AVAILABLE SPACE

AVAILABILITY



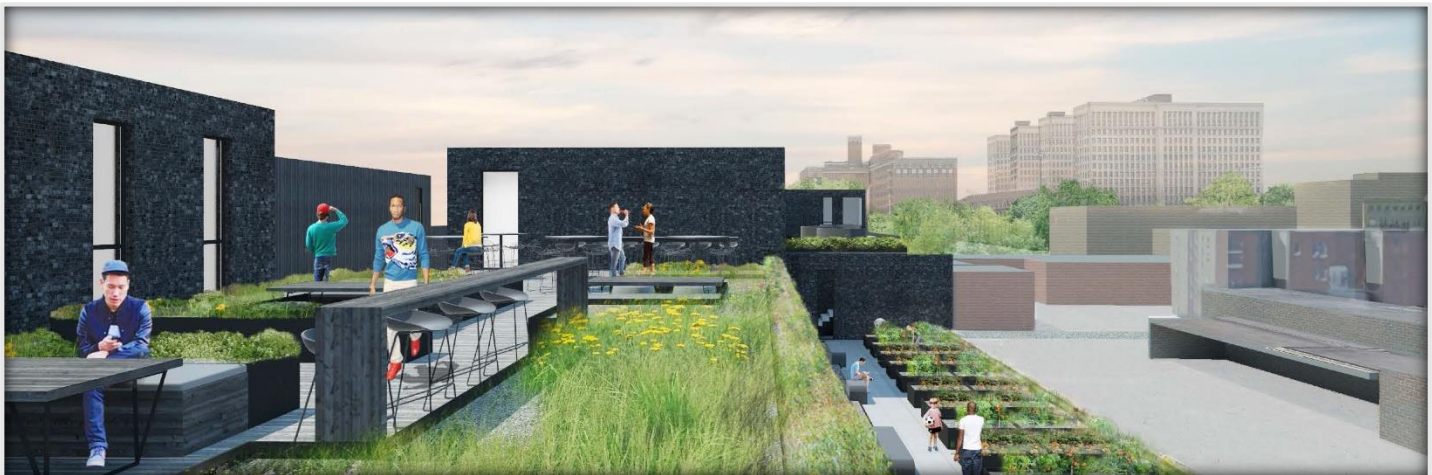
SITE LAYOUT



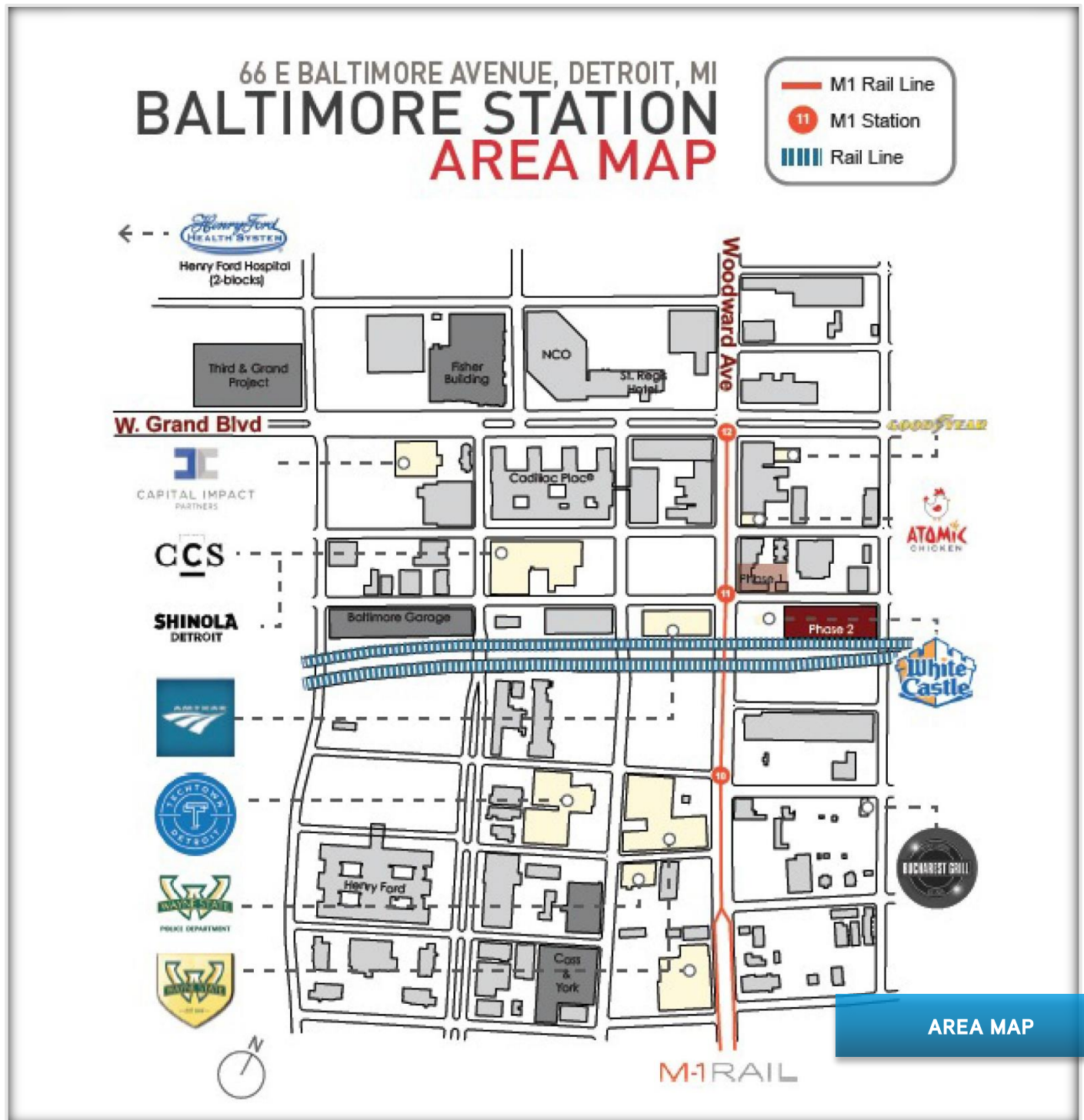
SURROUNDING PARKING



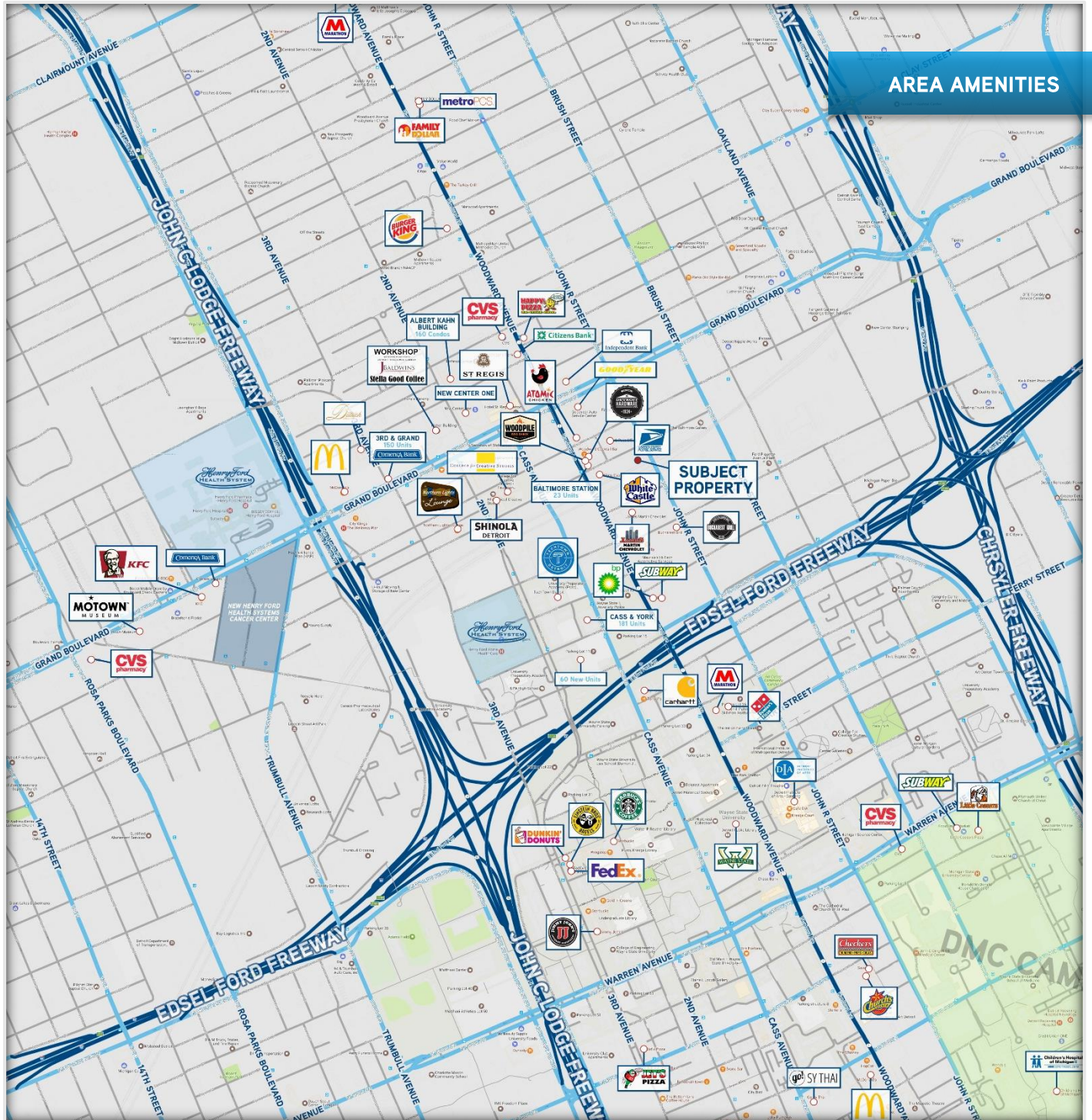
BUILDING CONCEPTS



LOCAL SURROUNDINGS



LOCAL SURROUNDINGS



SUMMARY PROFILE

2000-2010 Census, 2016 Estimates with 2021 Projections

Calculated using Weighted Block Centroid from Block Groups



Lat/Lon: 42.3689/-83.0701

RS1

66 E Baltimore Ave

Detroit, MI 48202

1 mi radius

3 mi radius

5 mi radius

POPULATION	2016 Estimated Population	13,725	135,000	326,659
	2021 Projected Population	13,686	139,145	340,664
	2010 Census Population	13,050	136,440	339,635
	2000 Census Population	15,908	178,377	458,955
	Projected Annual Growth 2016 to 2021	-0.1%	0.6%	0.9%
	Historical Annual Growth 2000 to 2016	-0.9%	-1.5%	-1.8%
	2016 Median Age	35	36.6	36.1
HOUSEHOLDS	2016 Estimated Households	6,837	58,934	132,247
	2021 Projected Households	6,984	62,367	141,947
	2010 Census Households	6,261	57,124	131,695
	2000 Census Households	6,980	69,821	166,924
	Projected Annual Growth 2016 to 2021	0.4%	1.2%	1.5%
	Historical Annual Growth 2000 to 2016	-0.1%	-1.0%	-1.3%
RACE AND ETHNICITY	2016 Estimated White	19.0%	21.6%	21.5%
	2016 Estimated Black or African American	72.8%	66.7%	66.5%
	2016 Estimated Asian or Pacific Islander	4.2%	7.5%	3.8%
	2016 Estimated American Indian or Native Alaskan	0.2%	0.3%	0.4%
	2016 Estimated Other Races	3.9%	3.9%	7.7%
	2016 Estimated Hispanic	2.4%	2.7%	10.5%
INCOME	2016 Estimated Average Household Income	\$34,057	\$34,991	\$36,208
	2016 Estimated Median Household Income	\$23,078	\$25,349	\$27,325
	2016 Estimated Per Capita Income	\$17,863	\$15,836	\$15,090
EDUCATION (AGE 25+)	2016 Estimated Elementary (Grade Level 0 to 8)	3.7%	7.2%	8.4%
	2016 Estimated Some High School (Grade Level 9 to 11)	11.6%	15.5%	16.8%
	2016 Estimated High School Graduate	30.2%	30.4%	31.7%
	2016 Estimated Some College	22.7%	22.8%	22.9%
	2016 Estimated Associates Degree Only	6.7%	6.6%	6.2%
	2016 Estimated Bachelors Degree Only	12.4%	9.2%	7.7%
	2016 Estimated Graduate Degree	12.7%	8.4%	6.4%
BUSINESS	2016 Estimated Total Businesses	1,627	8,585	14,229
	2016 Estimated Total Employees	31,379	158,252	232,080
	2016 Estimated Employee Population per Business	19.3	18.4	16.3
	2016 Estimated Residential Population per Business	8.4	15.7	23.0

This report was produced using data from private and government sources deemed to be reliable. The information herein is provided without representation or warranty.