



Northway Square East

2150 N 107th Street
Seattle, WA 98133



OFFICE & MEDICAL SPACE

Great North Seattle location for your convenience

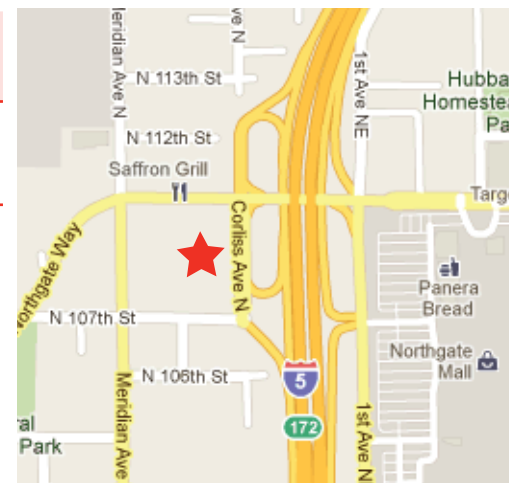
FEATURES

- Vibrant and central Location
- Excellent I-5 visibility - building signage available
- Immediate freeway access - including express lanes
- Ten minutes to downtown Seattle and the Eastside
- Employee parking included in rental rate
- Abundant visitor parking
- Convenient Public Transportation
- Great light-filled building with territorial views
- Quick access to Northgate Mall, Northwest Hospital and other neighboring business centers
- Delis, coffee shops, restaurants, hotels, banks and much more all within walking distance
- Generous and secure building storage available
- Building Manager and roaming security on-site.
- Long-term oriented building ownership
- Property management by Pan Pacific Properties Inc.

AVAILABLE SPACE FOR LEASE

Floor	RSF	\$/SF/yr	Comments
3	5,779	\$34.00	Divisible. Grand entrance off elevator.

NORTH SEATTLE LOCATION



For inquiries or to arrange a tour, please contact:

Casey Gibson

206 624 7418 office

206 354 2206 mobile

casey.m.gibson@colliers.com

601 Union Street, Ste 5300

Seattle, WA 98101

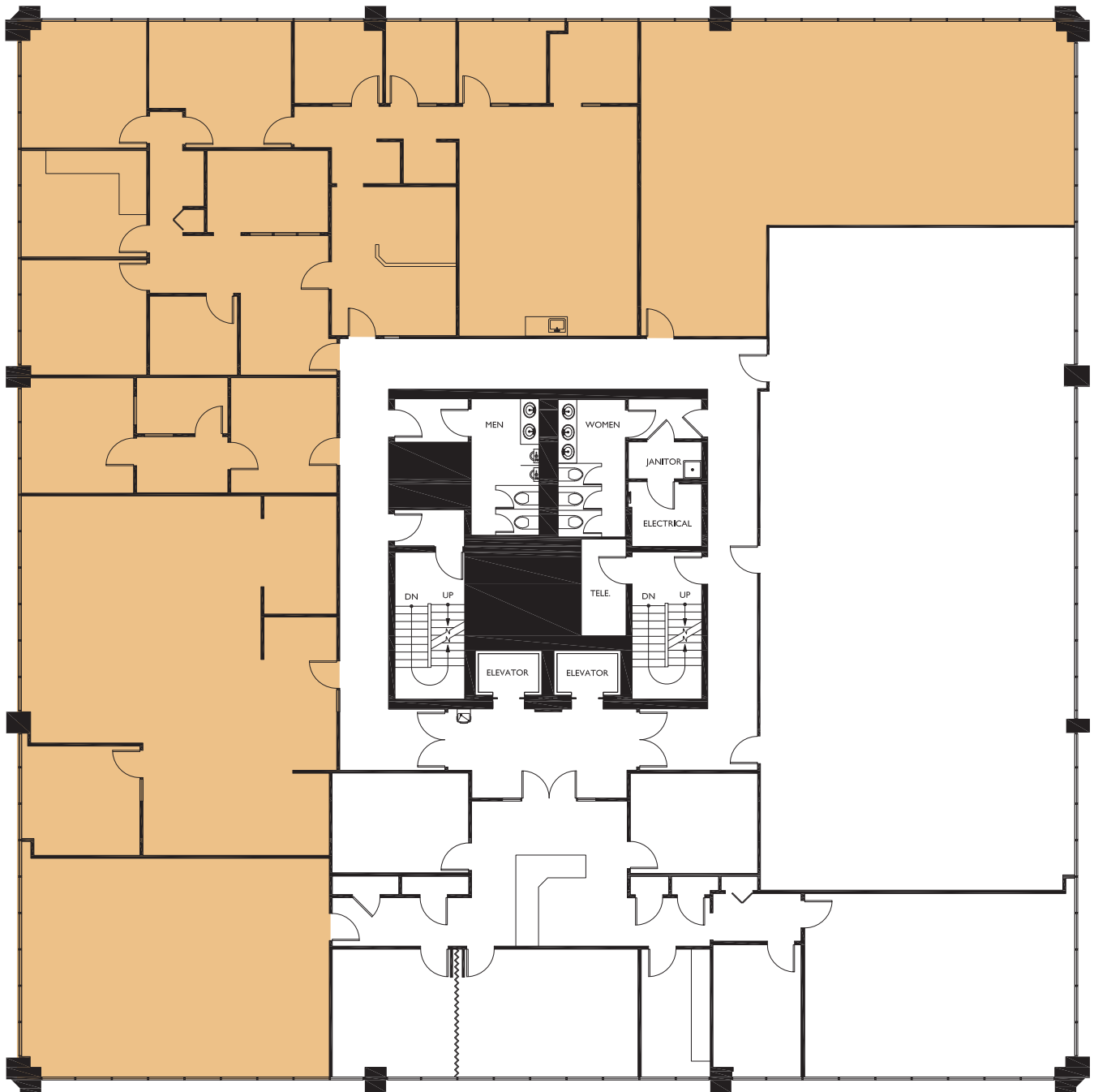
206 223 0866

www.colliers.com



FLOOR PLAN

■ Shaded areas represent leased space



3rd Floor

Additional floor plans or customized suite designs available upon request.

For inquiries or to arrange a tour, please contact:

Casey Gibson

206 624 7418 office

206 354 2206 mobile

casey.m.gibson@colliers.com

601 Union Street, Ste 5300
Seattle, WA 98101

206 223 0866

www.colliers.com

