



AVAILABLE

1,600 SF | 1701 WELSH ROAD
PHILADELPHIA, PA

CONTACT US

TODD SUSSMAN
SENIOR VICE PRESIDENT
+1 215 928 7575
todd.sussman@colliers.com

JOSH GOLDFINE
VICE PRESIDENT
+1 215 928 7565
josh.goldfine@colliers.com

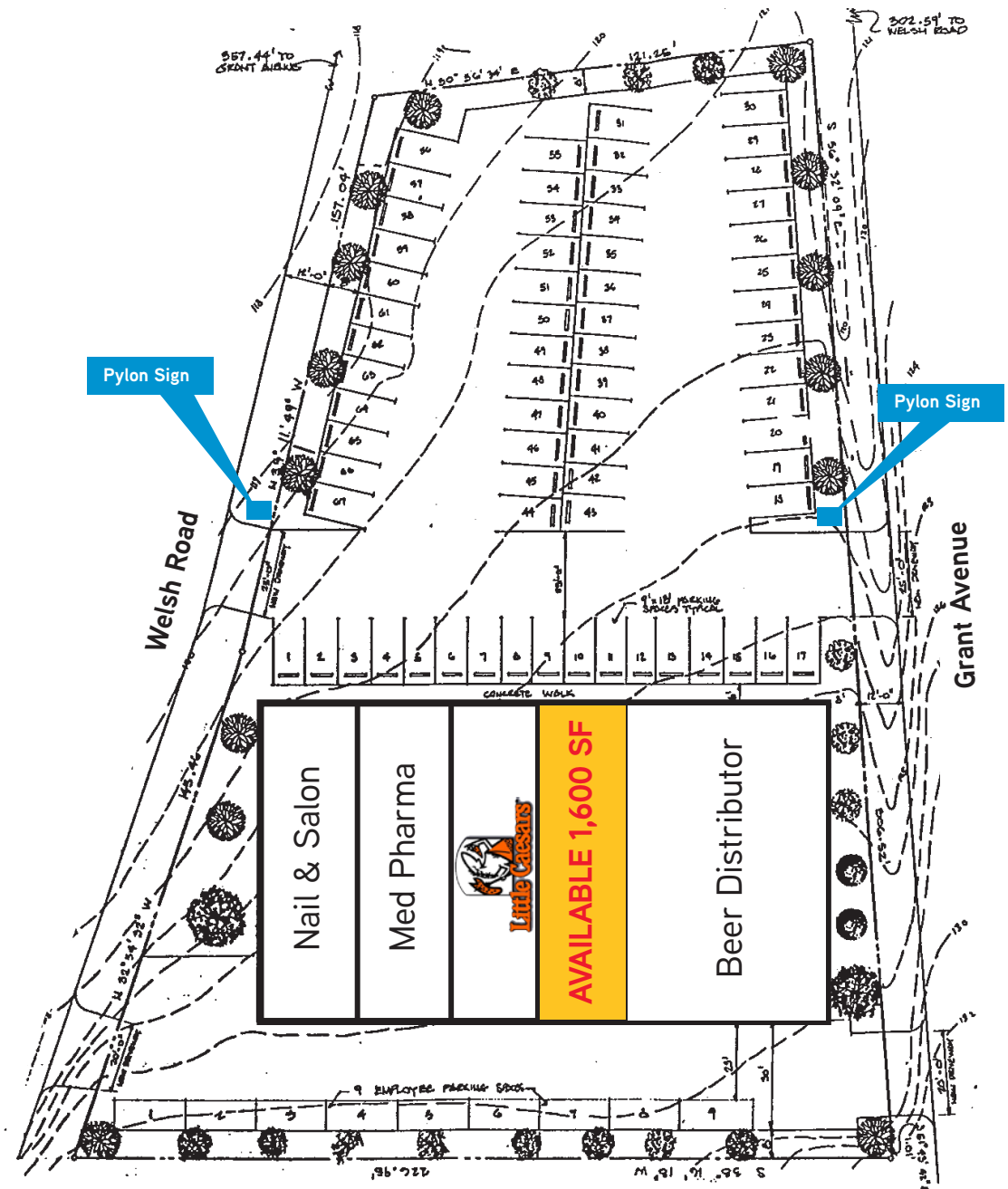
COLLIERS INTERNATIONAL
Ten Penn Center
1801 Market Street, Suite 550
Philadelphia, PA 19103
www.colliers.com/philadelphia



PROPERTY FEATURES

- > 1,600 SF available, renovations completed
- > High traffic counts: 48,000+/- vehicles per day
- > Flagship store visibility on Grant Avenue
- > 76 car off-street parking
- > Easy access on Grant Avenue and Welsh Road

TRADE AREA RETAILERS INCLUDE...



The foregoing information was furnished to us by sources which we deem to be reliable, but no warranty or representation is made as to the accuracy thereof. Subject to correction of errors, omissions, change of price, prior sale or withdrawal from market without notice. The aerial image is intended to provide a general outline of the subject property. It is not a survey nor should it be relied upon for purposes of determining property lines or boundaries.

DEMOGRAPHICS

WITHIN 1 MILE



20,169
people



9,150
households



\$52,114
average HHI



10,184
employees

WITHIN 3 MILES



158,416
people



66,841
households



\$63,657
average HHI



65,114
employees

WITHIN 5 MILES



431,667
people



171,124
households

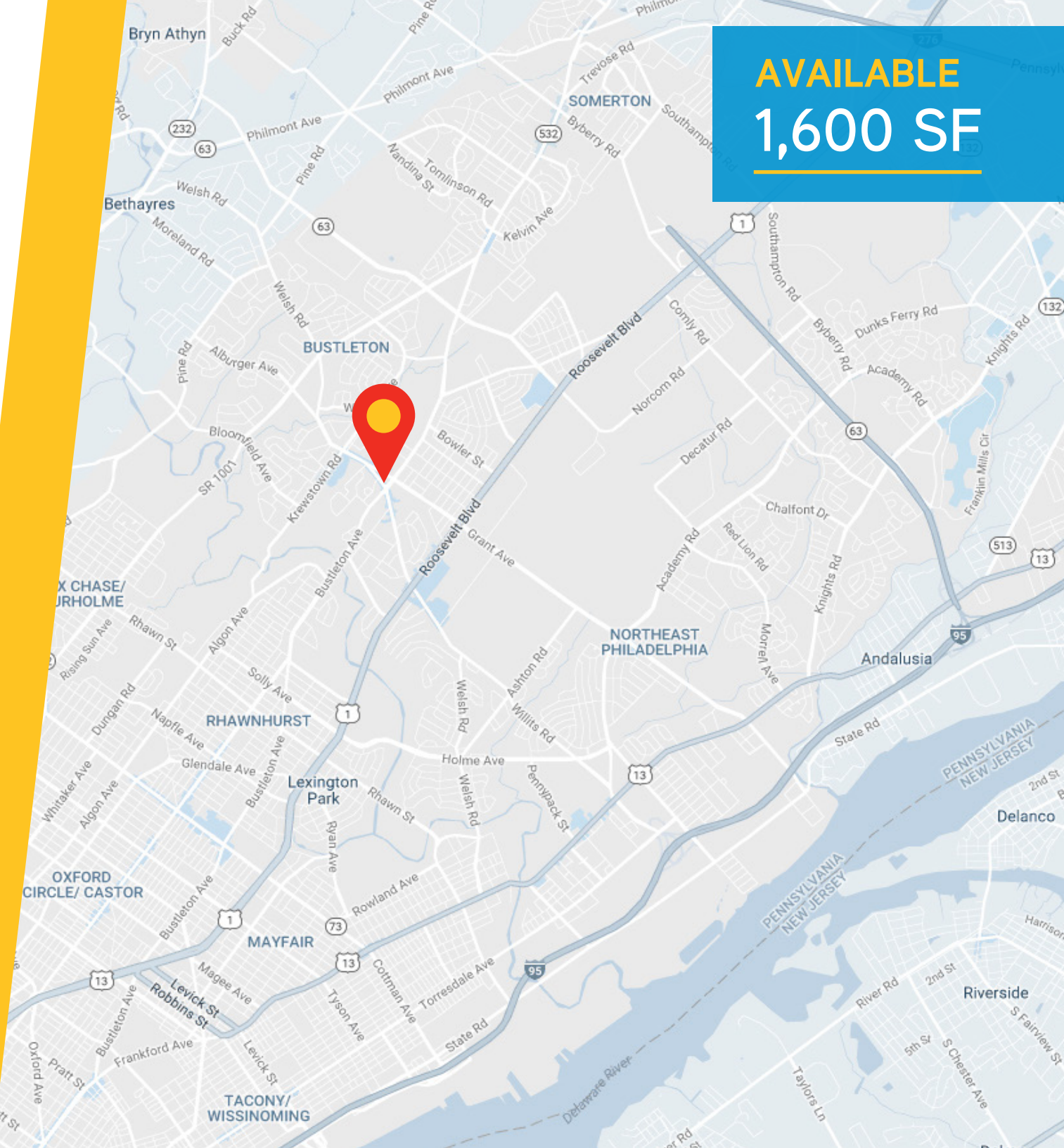


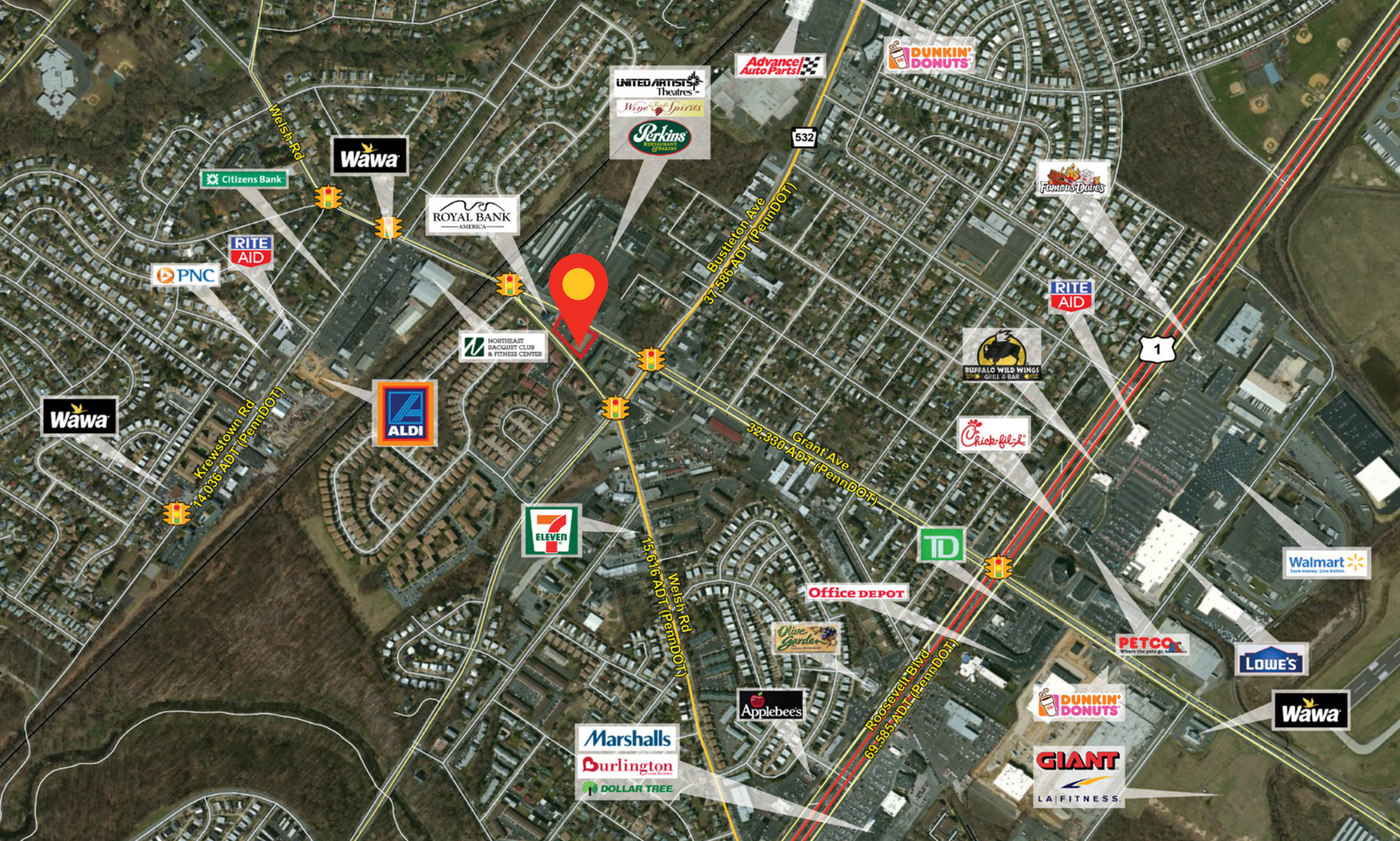
\$67,897
average HHI



150,166
employees

AVAILABLE
1,600 SF





AVAILABLE

1,600 SF

1701 WELSH ROAD
PHILADELPHIA, PA