

Sylvan Bldg Office For Lease

114 N Main St, Chelsea, MI 48118



Listing ID: 30578388
Status: Active
Property Type: Retail-Commercial For Lease
Retail-Commercial Type: Mixed Use, Street Retail
Contiguous Space: 921 SF
Total Available: 921 SF
Lease Rate: \$1,305 (Monthly)
Unit Price: \$17 PSF (Annual)
Base Monthly Rent: \$1,305
Lease Type: Modified Gross
Ceiling: 12 ft.



Overview/Comments

Great Main Street location near the Chelsea Clocktower Annex. Combination of retail and office spaces (12) with historic details including hardwood floors and brick walls. Offices updated in 2014. Large retail windows on ground level allow for lots of exposure and natural light. Just 2 miles from I-94 and 15 minutes to Ann Arbor.

More Information Online

<http://www.cpix.net/listing/30578388>

QR Code

Scan this image with your mobile device:



General Information

Taxing Authority:	City of Chelsea	Gross Building Area:	6,459 SF
Tax ID/APN:	06-06-12-182-009	Building/Unit Size (RSF):	6,459 SF
Retail-Commercial Type:	Mixed Use, Street Retail, Other	Usable Size (USF):	6,459 SF
Zoning:	C-5	Land Area:	0.45 Acres
Building Name:	The Sylvan Building		

Available Space

Suite/Unit Number:	10	Space Type:	New
Suite Floor/Level:	2nd	Date Available:	03/03/2020
Space Available:	921 SF	Lease Rate:	\$1,305 (Monthly)
Minimum Divisible:	921 SF	Lease Type:	Modified Gross
Maximum Contiguous:	921 SF	Conference Rooms:	1
Space Subcategory 1:	Mixed Use	Offices:	1
Space Subcategory 2:	Office Building	Kitchen/Breakroom:	Yes

Space Description Charming office within the Sylvan Building with tons of natural light & high ceilings. Well maintained - move right in! Good sized lobby with reception desk, large glassed conference room w/ exposed brick wall, kitchenette area & large back office that could easily accommodate 2 or more people.

Area & Location

Retail Clientele:	General, Family, Business	Airports:	Detroit Metro, Willow Run & Ann Arbor Municipal
Property Located Between:	E Middle Street & Jackson Street	Site Description:	Great visibility - on Main Street. Beautiful history building in great condition.
Property Visibility:	Excellent	Area Description:	Located in downtown Chelsea in historic Clocktower Annex. Walk to local shops, restaurants and entertainment.
Largest Nearby Street:	Main Street		
Feet of Frontage:	50		
Traffic/Vehicle Count:	11,800		
Highway Access:	I-94, Old US Hwy 12		

Building Related

Tenancy:	Multiple Tenants	Parking Type:	Surface, Other
Total Number of Buildings:	1	Parking Description:	On street parking & public parking available
Number of Stories:	3	Ceiling Height:	12
Typical SF / Floor:	2,153 SF	Passenger Elevators:	1
Property Condition:	Good	Freight Elevators:	0
Year Built:	1900	Heat Type:	Natural Gas
Year Renovated:	2014	Heat Source:	Central
Roof Type:	Flat	Air Conditioning:	Package Unit
Construction/Siding:	Stucco	Internet Access:	Cable

Land Related

Lot Frontage:	73	Sewer Type:	Municipal
Lot Depth:	102.5	Easements:	Other
Water Service:	Municipal	Easements Description:	provided with title commitment

Zoning Description This district is intended to be used in that area of the City which has been designated as the Central Business District in the City's adopted Comprehensive plan where municipal parking facilities are available within reasonable walking distances. The C-5 Central Business District is intended to provide for a traditional mixture of small office buildings, specialty retail stores, entertainment, public spaces and related activities that are mutually supporting and serve the needs of the City and surrounding communities. The districts regulations are designed to encourage a lively social environment and economically viable downtown with a wide variety of uses, including residences in upper floors, in a pedestrian oriented setting, with common parking.

Legal Description BEG AT A PT IN THE W LINE OF LOT 3 BLK 2 ORIGINAL PLAT, VILLAGE OF CHELSEA WHICH PT IS 6 INS S OF NW COR OF LOT 3 TH S TO A PT IN W LINE OF LOT 5 WHICH PT IS 7 FT 10 INS S OF NW COR OF LOT 5, TH 108.61 FT PARALLEL TO N LINE OF LOT 5, TH DEFL 89 DEG 54' TO THE LEFT 43.26 FT, TH NW'LY 30.66 FT TO A POINT WHICH IS 102.70 FT E OF THE PL OF BEG, TH W 102.70 FT TO THE PL OF BEG, BEING ENTIRE LOT 4 AND PART OF LOTS 3, 5, 9, 10 AND 40 BLK 2 ORIGINAL PLAT.

Location

Address:	114 N Main St, Chelsea, MI 48118	MSA:	Ann Arbor
County:	Washtenaw	Submarket:	Washtenaw W of 23



Property Images



Stairwell



IMG_4017



Top floor, office exteriors, skylight, stairs



IMG_4018



DSC_6012_3



IMG_4020



IMG_4024



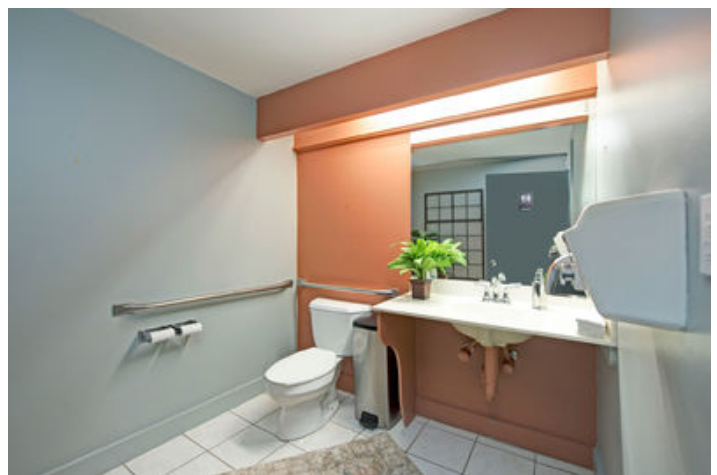
IMG_4030



IMG_4025



IMG_4023



Bathroom (one on each floor)



Sylvan Building, sidewalk front view



DSC_6012_3

Property Contacts



James H. Chaconas

Colliers International
734-994-3100 [0]
jim.chaconas@colliers.com