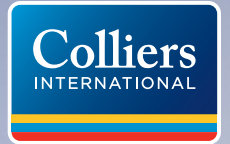


FOR LEASE >



DIABLO
TECHNOLOGY
CENTER

4511 WILLOW ROAD & 5870 STONERIDGE DRIVE, PLEASANTON, CA



IAN THOMAS
+1 925 227 6246
i.thomas@colliers.com
CA License No. 01279455

DIABLOTECHCENTER.COM

COLLIERS INTERNATIONAL
3825 Hopyard Road, Suite 195
Pleasanton, CA 94588
www.colliers.com

FOR LEASE >

Diablo Technology Center

4511 WILLOW ROAD & 5870 STONERIDGE DRIVE,
PLEASANTON, CA



Building Features

4511 Willow Road

- > Updated monument signage available
- > Direct access and identity to suite from parking
- > Separately metered
- > Grade-level loading doors available
- > 4/1,000 parking ratio
- > Close proximity to I-580, I-680 & BART
- > Walking distance to retail amenities & services
- > New outdoor patio seating area

5870 Stoneridge Drive **100% LEASED**

- > Updated building & monument signage available
- > Class A office/flex building
- > Responsive local ownership
- > Grade-level roll-up doors available
- > 3.7/1,000 parking ratio
- > Close proximity to I-580, I-680 & BART
- > Walking distance to retail amenities & services



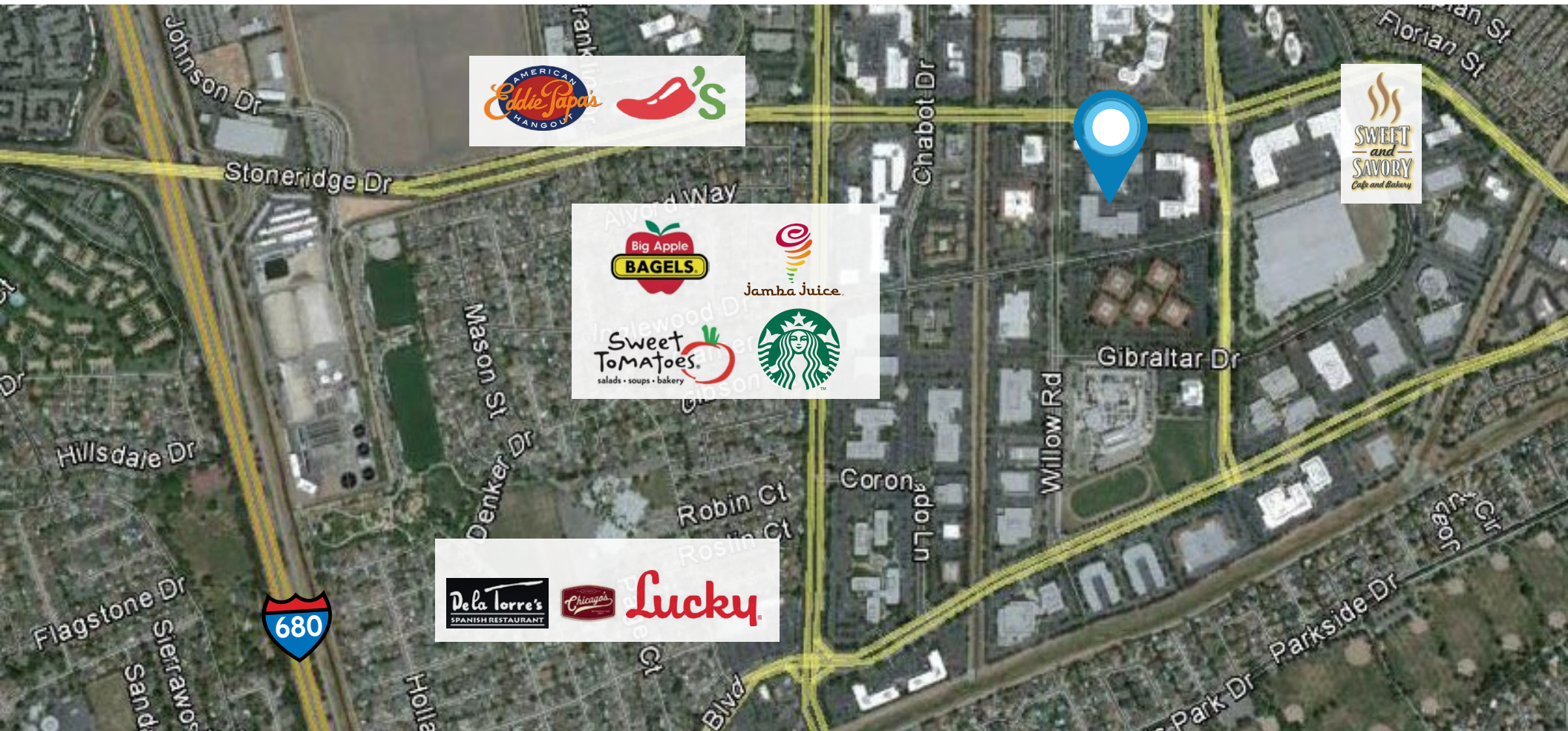
IAN THOMAS
+1 925 227 6246
i.thomas@colliers.com
CA License No. 01279455

COLLIERS INTERNATIONAL
3825 Hopyard Road, Suite 195
Pleasanton, CA 94588
www.colliers.com

FOR LEASE >

Diablo Technology Center

4511 WILLOW ROAD & 5870 STONERIDGE DRIVE,
PLEASANTON, CA



IAN THOMAS
+1 925 227 6246
i.thomas@colliers.com
CA License No. 01279455

COLLIERS INTERNATIONAL
3825 Hopyard Road, Suite 195
Pleasanton, CA 94588
www.colliers.com

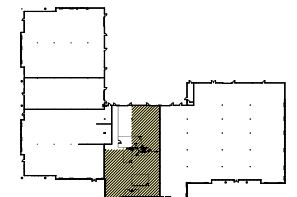
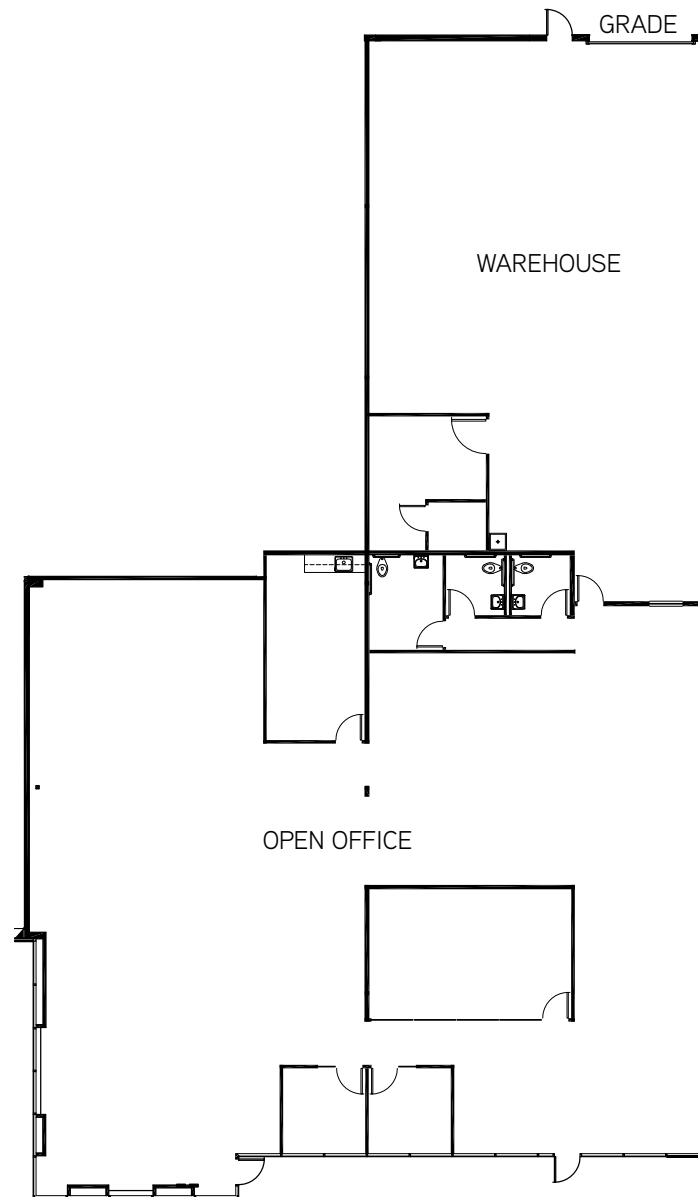
FOR LEASE >

Diablo Technology Center

4511 WILLOW ROAD & 5870 STONERIDGE DRIVE,
PLEASANTON, CA



4511 Willow Road, Suite 6
8,057± SF



FOR LEASE >

Diablo Technology Center

4511 WILLOW ROAD & 5870 STONERIDGE DRIVE,
PLEASANTON, CA



4511 Willow Road, Suite 1
11,481± SF

