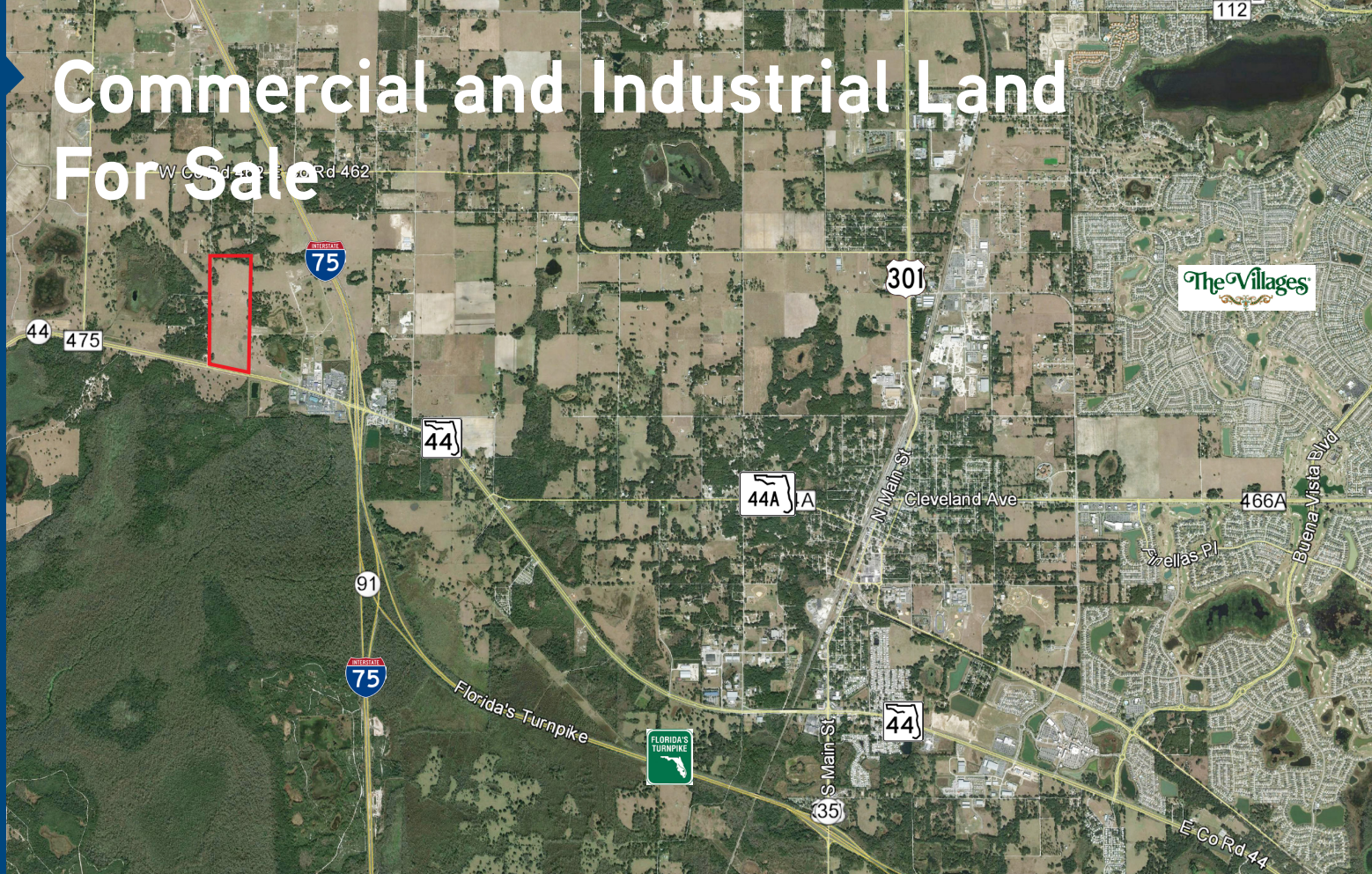


Commercial and Industrial Land For Sale



LAND FOR SALE

State Road 44 Wildwood, FL 34785

Colliers International
255 South Orange Avenue
Suite 1300
Orlando, FL 32801
407.843.1723

www.colliers.com

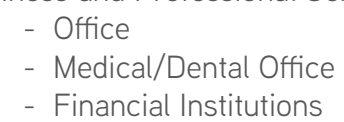
This Distribution/Inland Port site is located at the apex of Central Florida's transportation hub. Easy access to nearly 8 million people with location 1/4 mile west of I-75 on SR 44; one mile north of the I-75 and Florida Turnpike interchange; and two miles west of US 301 on SR 44.

Features

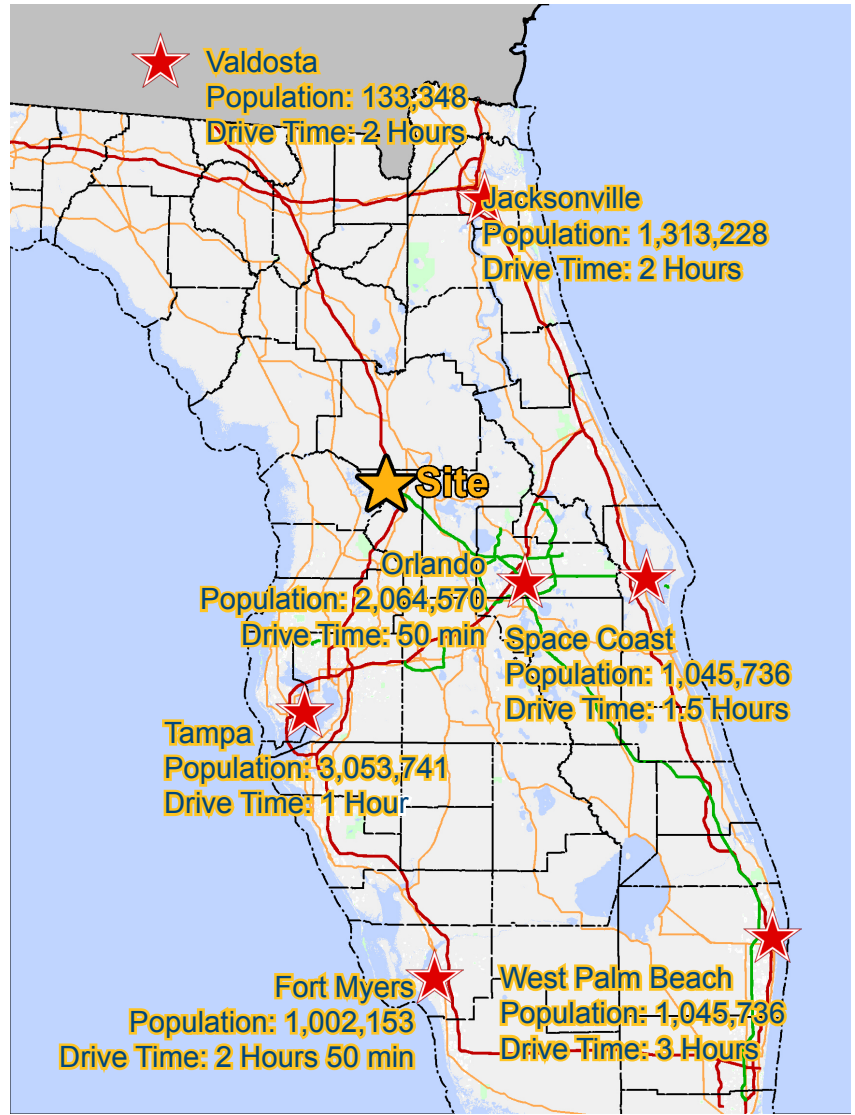
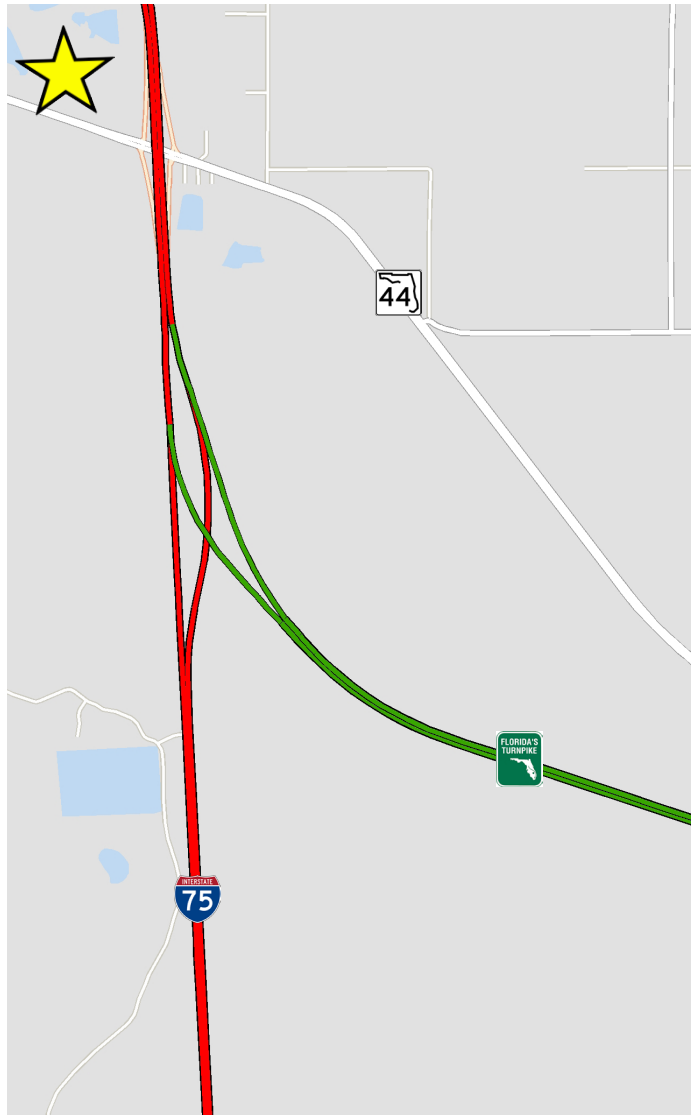
- 109 acres
- Zoned CH (Heavy Commercial - Sumter County)
- Uses: Industrial/Office/Commercial
- Dimensions:
 - South boundary: 1,326' (on SR 44)
 - East boundary: 3,760'
 - North boundary: 1,308'
 - West boundary: 3,489' (on CR 231)
- **\$8,175,000**

Population of 7.6 million within a 2 hour drive time





Overview Maps



Contact Us

DEBORAH MICKLER, SIOR, CCIM
MANAGING DIRECTOR
407.362.6161
deborah.mickler@colliers.com

DAVID WILSON
ASSOCIATE
407.362.6125
david.wilson@colliers.com

LEE MORRIS, SIOR, LEED AP
MANAGING DIRECTOR
407.362.6175
lee.morris@colliers.com

Colliers International
255 South Orange Avenue
Suite 1300
Orlando, FL 32801
407.843.1723

www.colliers.com

