

1414 West 6th Street

LAWRENCE, KANSAS



Property Description

This fully remodeled office space is close to downtown Lawrence, KU, and Lawrence Memorial Hospital. The property is located at the intersection of Florida Street and 6th Street in The Landing strip mall. The new suites include open areas and single offices along, with common area, restrooms, and ADA access. Qualified tenants can select new carpet color.

Available Space

Suite 103

- > 1,300 SF
- > Lease rate: \$1,300.00 monthly, gross plus utilities
- > Lower level suite with 4 private offices, storage, and open area

Suite 201

- > 1,120 SF
- > Lease rate: \$1,120 monthly, gross plus utilities
- > Upper level suite with 4 private offices, reception, storage, restroom, and washer/dryer hook-ups

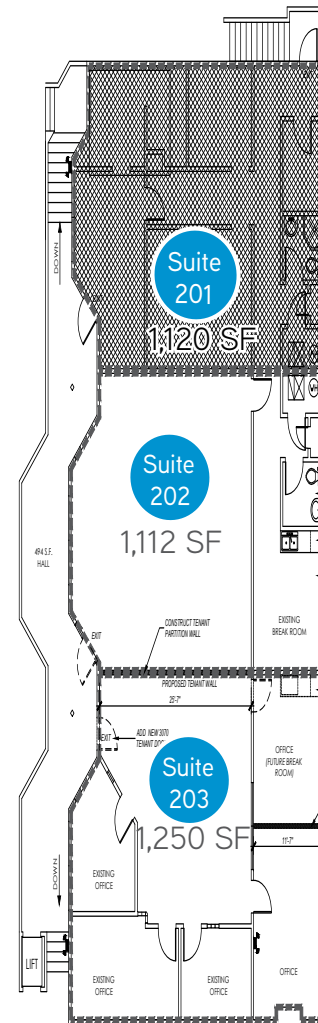
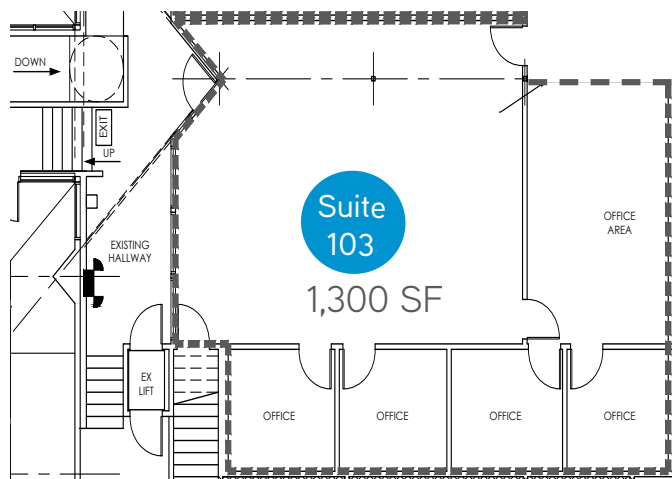
Suite 202

- > 1,112 SF
- > Lease rate: \$1,112.00 monthly, gross plus utilities
- > Upper level suite with large open area, break room, and restroom

Suite 203

- > 1,250 SF
- > Lease rate: \$1,250.00 monthly, gross plus utilities
- > Upper level suite with break room, 3 private offices and a large open area

1414 West 6th Street - Floor Plans



1414 West 6th Street - Aerial

