

FOR LEASE > OFFICE SPACE



1414 West 6th Street

LAWRENCE, KANSAS



Property Description

This fully remodeled office space is close to downtown Lawrence, KU, and Lawrence Memorial Hospital. The property is located at the intersection of Florida Street and 6th Street in The Landing strip mall. The new suites include open areas and single offices along with common area, restrooms and ADA access. Qualified tenants can select new carpet color.

Available Space

Suite 203

- > 1,250 SF
- > Lease rate: \$1,250.00 monthly, gross plus utilities
- > Upper-level suite with break room
- > 3 private offices and a large open area

Suite 102

- > 1,164 SF
- > Lease rate: \$1,164.00 monthly, gross plus utilities
- > Lower-level suite with open area and break room

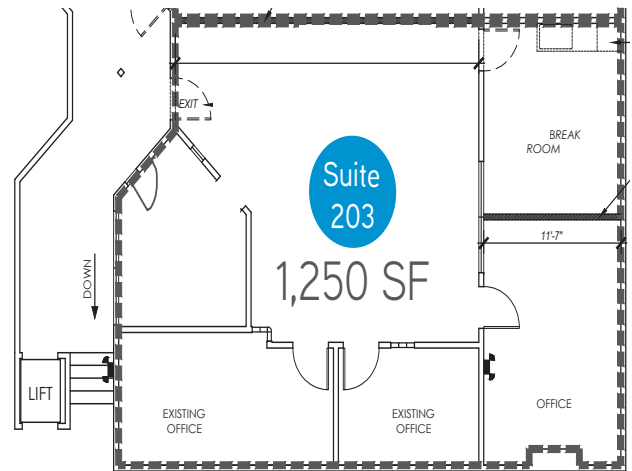
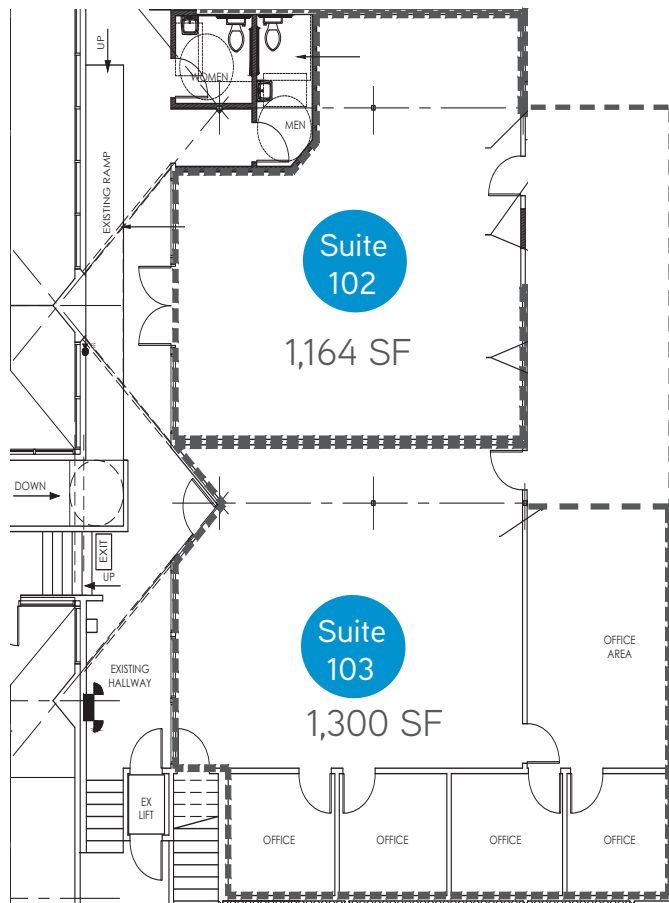
Suite 103

- > 1,300 SF
- > Lease rate: \$1,300.00 monthly, gross plus utilities
- > Lower-level suite with 4 private offices, storage, and open area

AGENT: KIRSTEN FLORY
+1 785 865 3821
LAWRENCE, KS
kirsten.flory@colliers.com

COLLIERS INTERNATIONAL
805 New Hampshire, Suite C
Lawrence, KS 66044
www.colliers.com

1414 West 6th Street - Floor Plans



1414 West 6th Street - Aerial

