

AMES PLACE

5921 AMES AVE, OMAHA, NE 68104



Accelerating success.



Building information

Type of Listing:	Retail/ Office for Lease	Intersection:	60 th & Ames
Price:	\$10.00 - \$12.00/SF	LoopNet #:	17765726
Operating Type:	NNN		
Est. Expenses:	\$1.00/SF (2015)		
Available:	Immediately	Heat & A/C:	Yes
Total SF Available:	12,940 SF	Ceiling Height:	9' – 12'
Total Building SF:	22,618 SF	Sprinkler:	Yes
Year Built/Renovated:	1960 / 2014	Restrooms:	Yes
Center Type:	Neighborhood Center	Parking:	5.5:1,000

<u>Suite #:</u>	<u>SF Available:</u>	<u>Length of Lease:</u>	Negotiable
Suite A	1,500 SF	<u>TI Allowance:</u>	Negotiable
Suite C	4,030 SF	<u>Rent Escalator:</u>	Negotiable
Suite D	3,705 SF	<u>Lease Form:</u>	Landlord's
Suite E	3,705 SF		

Overview

Outstanding redevelopment project at 60th & Ames Avenue. Great traffic counts and close to the new Walmart. Center is anchored by Mid K Beauty Supply and GEN X Clothing will open fall of 2015. Great opportunity for retail or office user.

Abundant parking! Asking rents are for warm shell.

Information furnished is from sources deemed reliable, but is not guaranteed by Colliers International, or its agents, and is subject to change, corrections, errors and omissions, prior sales, or withdrawn without notice.

Contact us

AGENT: Cori Adcock
+1 402 763 1712
Omaha, NE
Cori.Adcock@colliers.com

COLLIERS INTERNATIONAL
6464 Center Street | Suite 200
Omaha, NE 68106
www.colliers.com

FOR LEASE > RETAIL/OFFICE SPACE

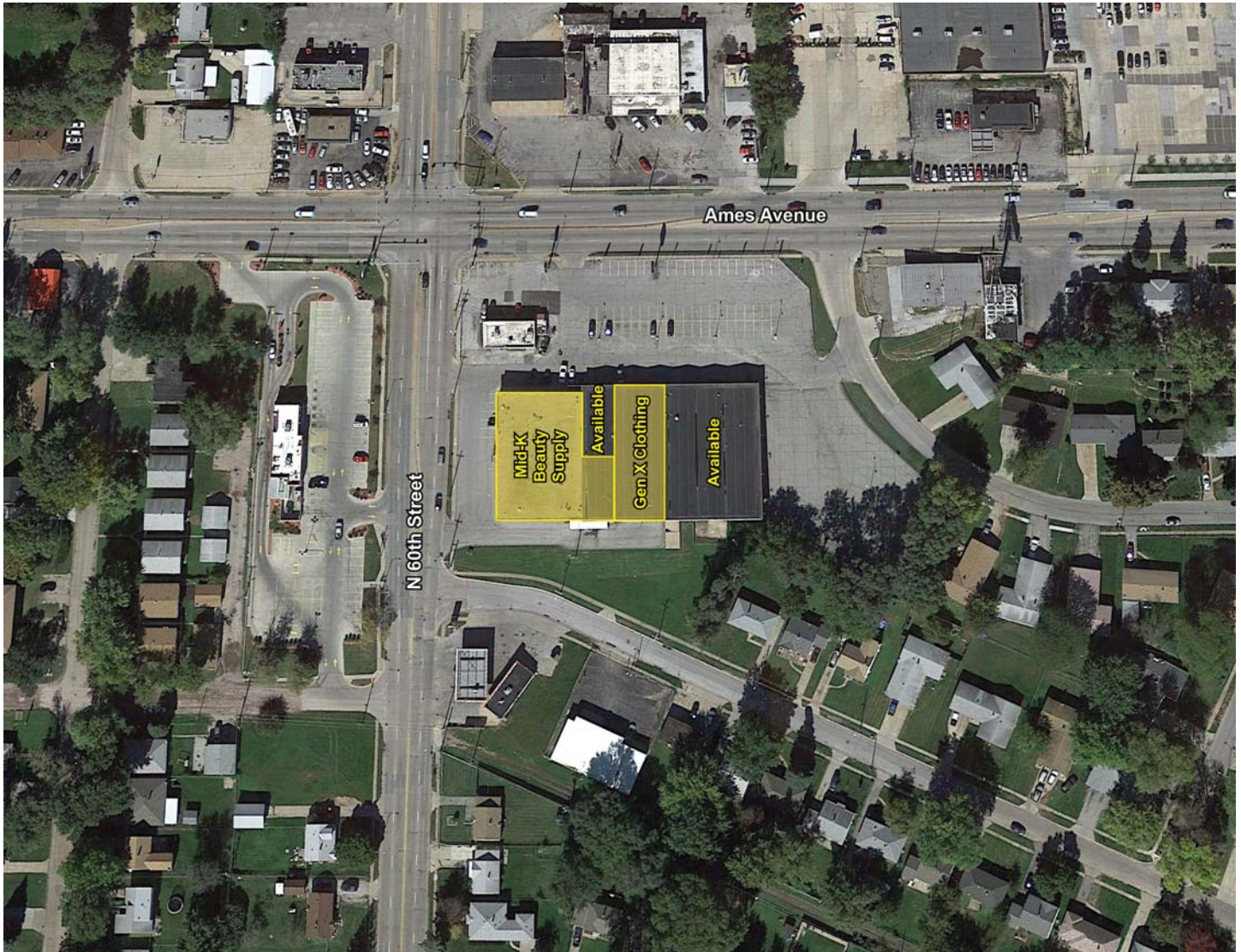
AMES PLACE

5921 AMES AVE, OMAHA, NE 68104



Accelerating success.

Aerial



Contact us

AGENT: Cori Adcock
+1 402 763 1712
Omaha, NE
Cori.Adcock@colliers.com

COLLIERS INTERNATIONAL
6464 Center Street | Suite 200
Omaha, NE 68106
www.colliers.com