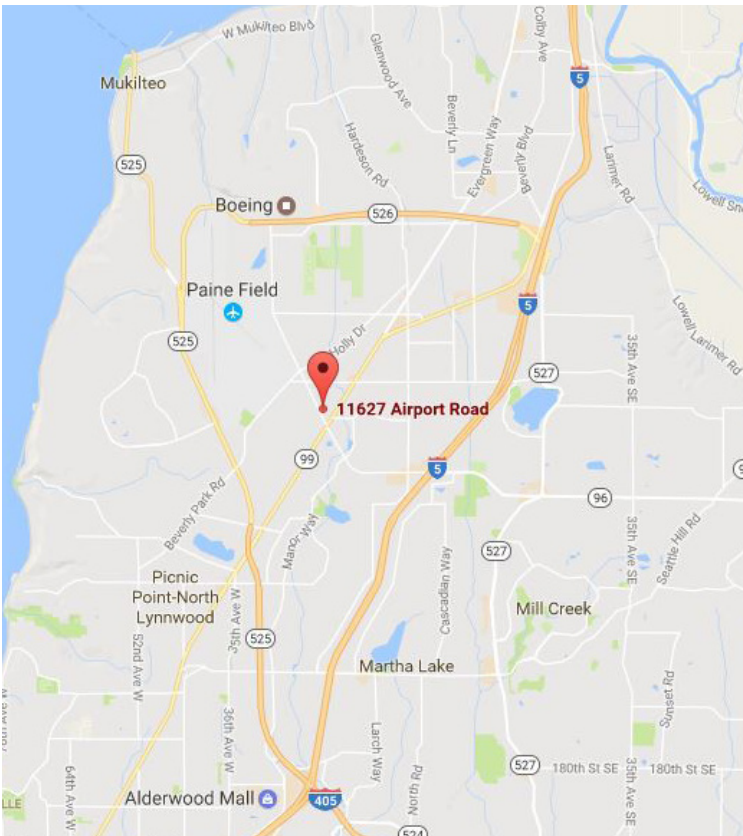


**FOR
LEASE**

Airport Road Business Park

11627 Airport Rd., Everett, WA

Colliers
INTERNATIONAL



SPACE DETAILS

First Floor

Suites B-E: 11,793 SF - divisible (available 6/1/18)

Suite F: 3,627 SF (available immediately)

Lower Level

Suite I: 2,658 SF (available 6/1/18)

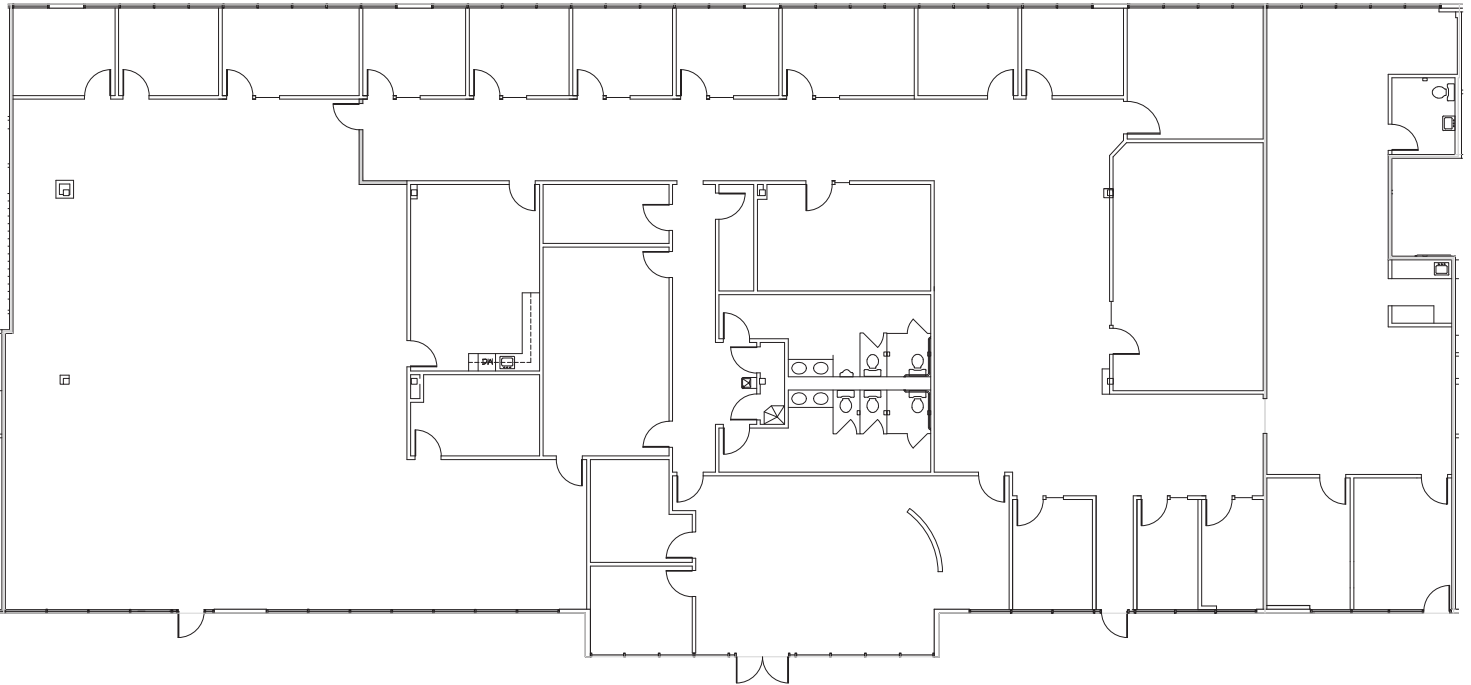
Storage: 393 SF (available 6/1/18)

Asking Rate: \$12.00/SF/Yr, NNN

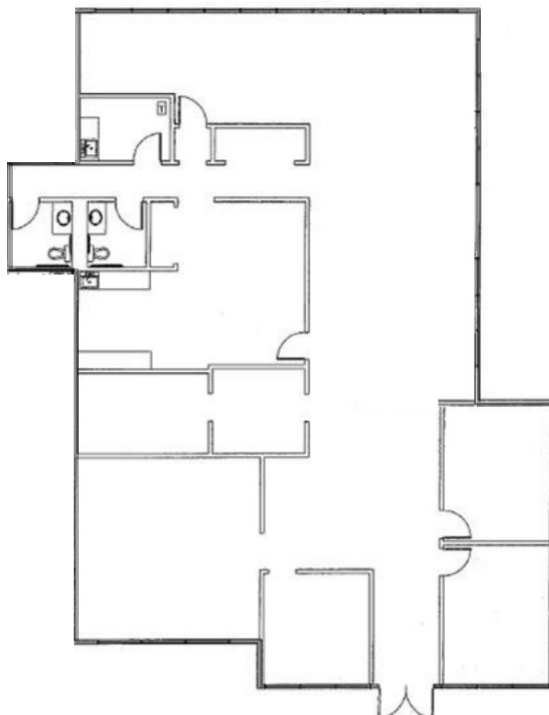
- :: Ample parking throughout business park
- :: Extremely accessible to both I-5 and Highway 99
- :: Large, bright, first floor offices
- :: Close proximity to Boeing manufacturing facility
- :: Many amenities nearby

Airport Road Business Park - Floor Plans

SUITES B-E: 11,763 SF

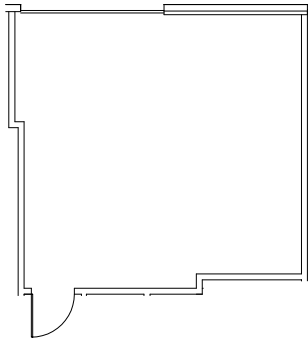


SUITE F: 3,627 SF

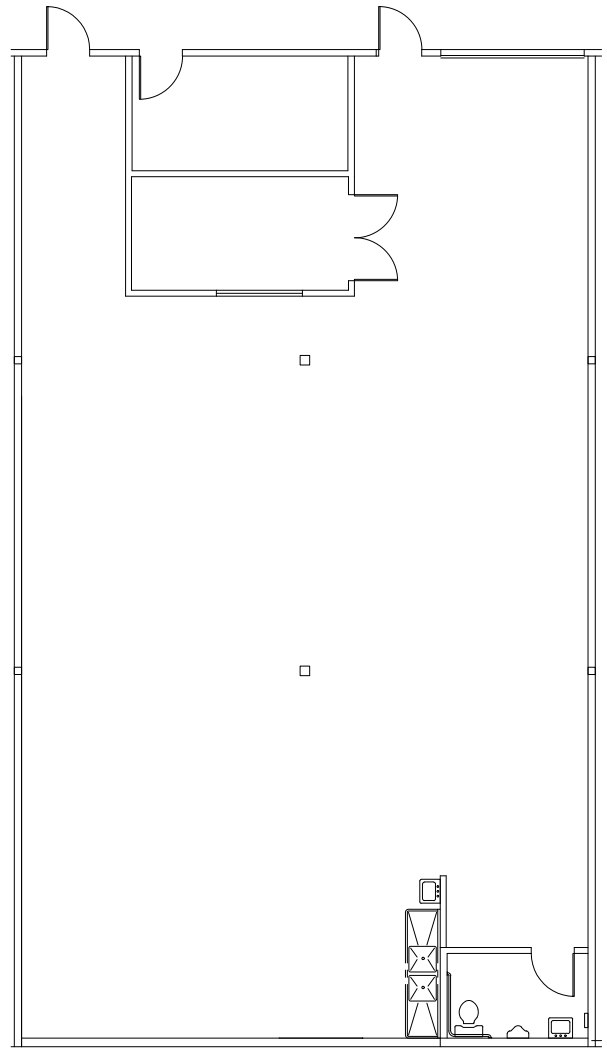


Airport Road Business Park - Floor Plans

STORAGE: 393 SF



SUITE I: 2,658 SF



DAVID GUNTHER
+1 425 453 4546
david.gunther@colliers.com

COLLIERS INTERNATIONAL
+1 425 453 4545
www.colliers.com/bellevue

