



JEFFERSON

LOGISTICS CENTER

355 HORACE HEAD RD / JEFFERSON / GEORGIA

±492,409 - 1,015,669 SF

Available for Lease



SITE DETAILS

36/185

188/4

227/400

4,000

7/25

BUILDING

Clear height:
36'

Truck Court Depth:
185'

Building Dimensions:
570'D x 1,782'L

Available Space Dimensions:
Suite A: 570'D x 918'L
Suite B: 570'D x 864'L

LOADING AREA

Cross dock loading:
Suite A: 94

Suite B: 94

Drive-In:
Suite A: 2 doors (12'x14')

Suite B: 2 doors (12'x14')

Bay Sizes:
54'W x 50'D
(60'D loading bays)

PARKING

Trailer parking:
Suite A: 121 spaces

Suite B: 106 spaces

Parking:
Suite A: 197 spaces

Suite B: 203 spaces

ELECTRICAL POWER

Power:
2,000 amps (each side)

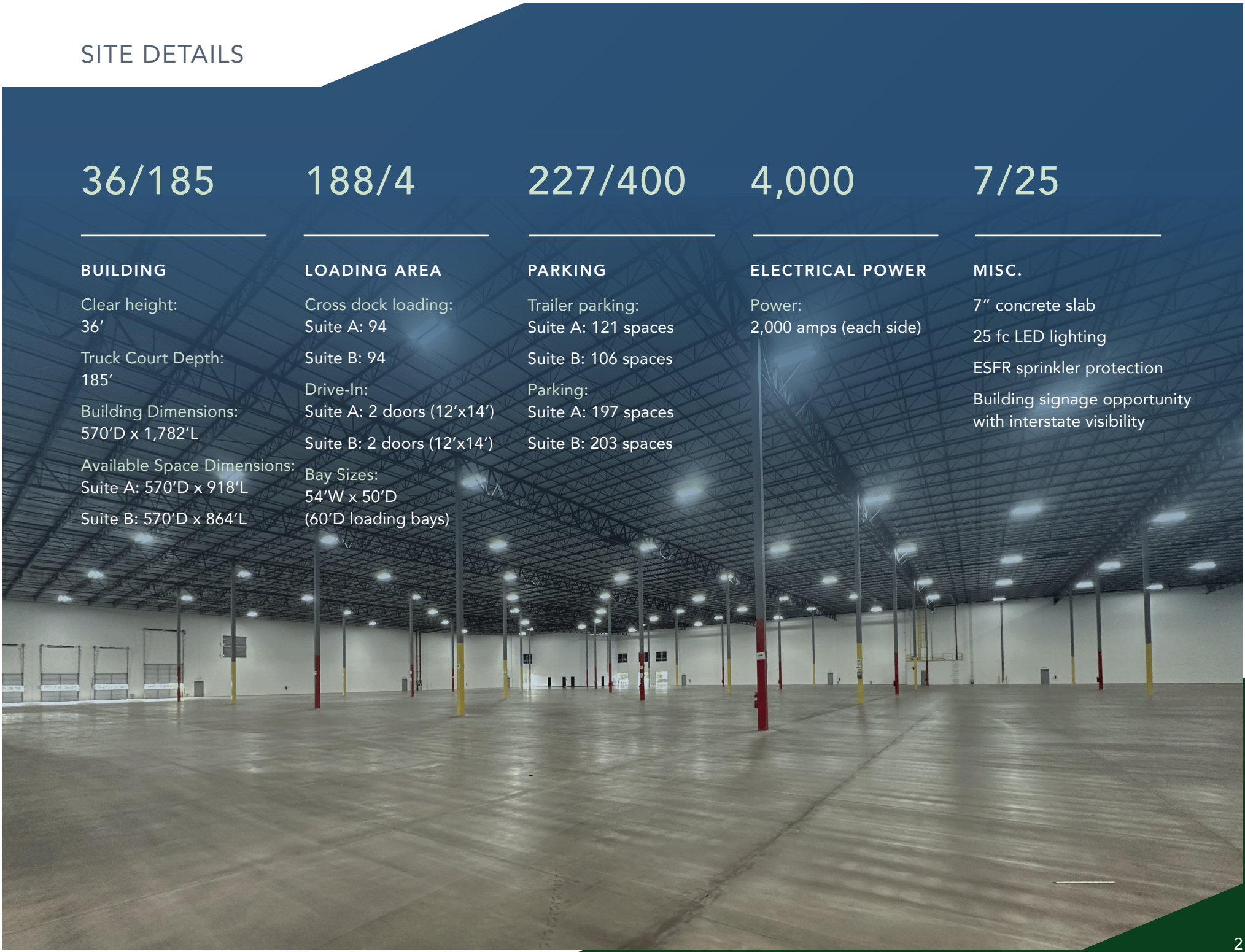
MISC.

7" concrete slab

25 fc LED lighting

ESFR sprinkler protection

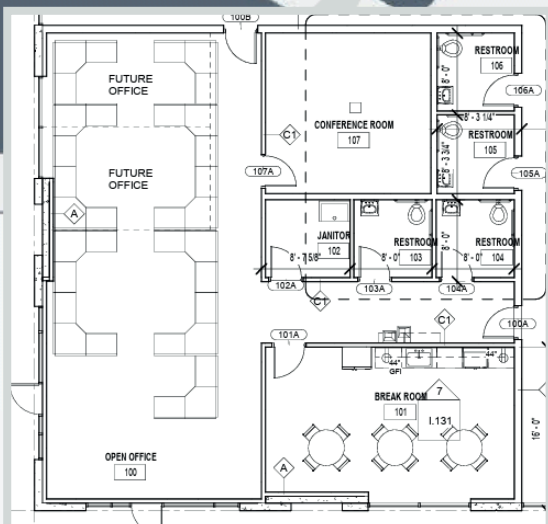
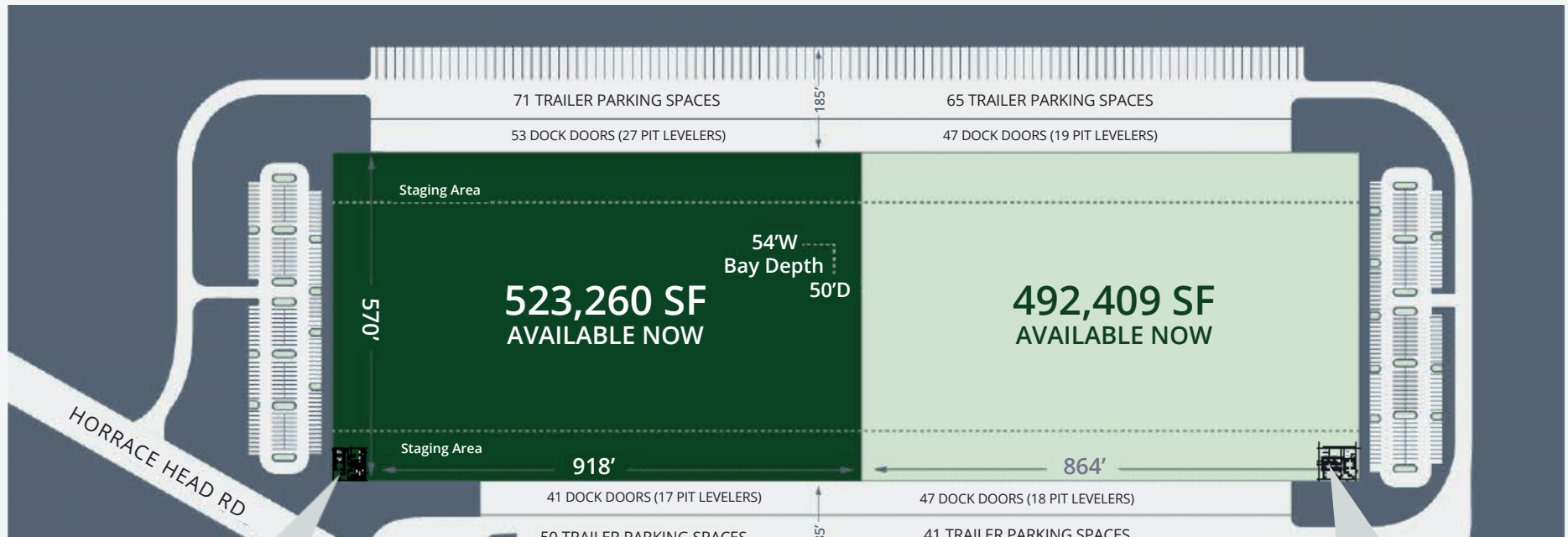
Building signage opportunity
with interstate visibility



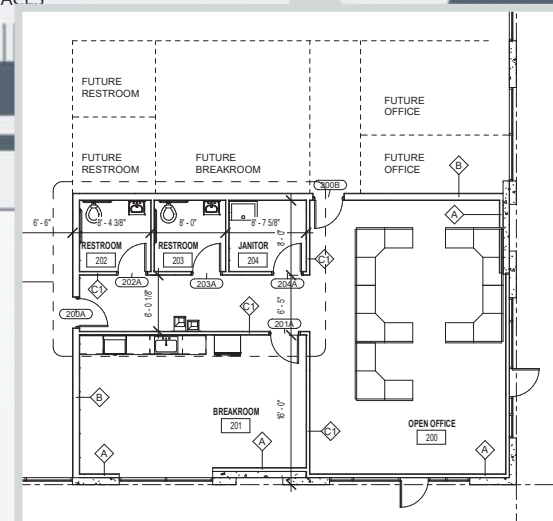
SITE PLAN

Partial Building - Available Now

INTERSTATE 85



2,213 SF Office Space

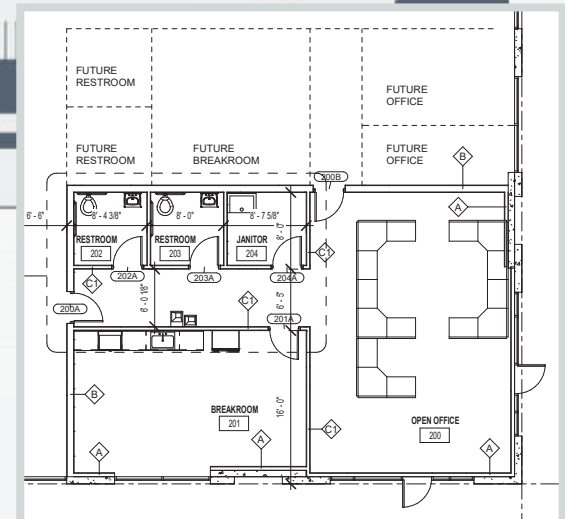
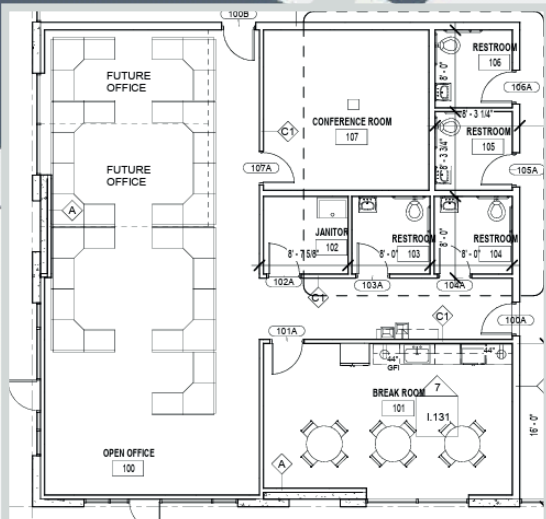
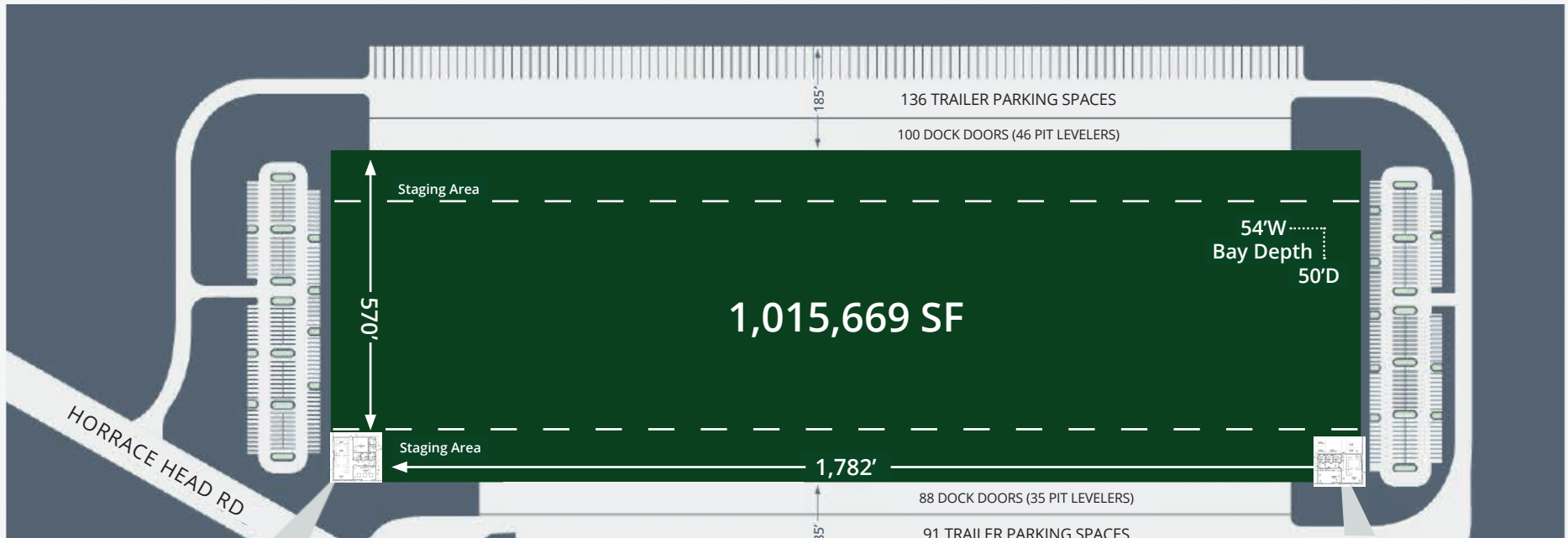


1,444 SF Office Space

SITE PLAN

Full Building - Available Now

INTERSTATE 85

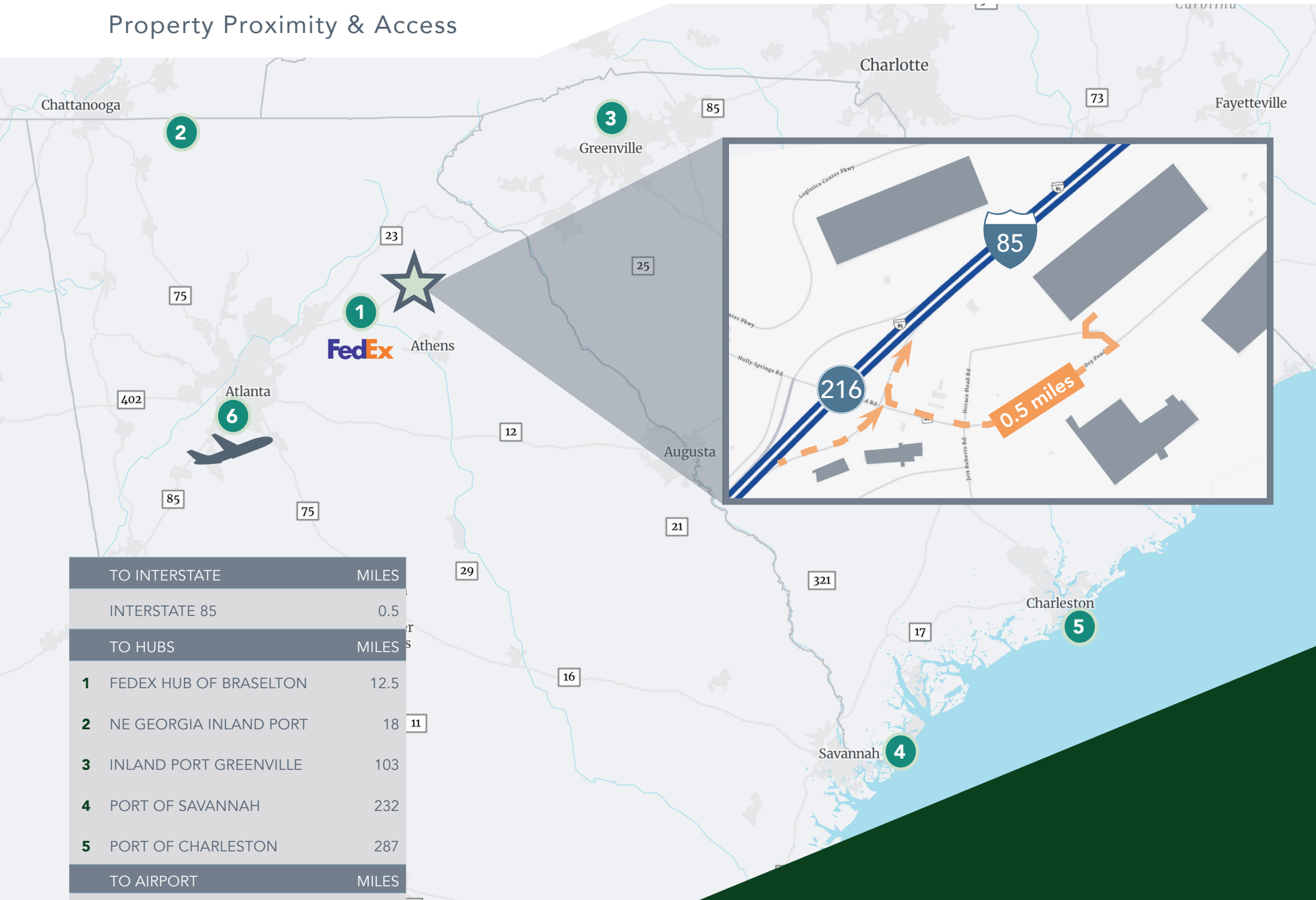


CORPORATE NEIGHBORS



AN ESTABLISHED
BUSINESS LOCATION
HOME TO BIG BRANDS

Property Proximity & Access



TO INTERSTATE		MILES
	INTERSTATE 85	0.5
TO HUBS		MILES
1	FEDEX HUB OF BRASELTON	12.5
2	NE GEORGIA INLAND PORT	18
3	INLAND PORT GREENVILLE	103
4	PORT OF SAVANNAH	232
5	PORT OF CHARLESTON	287
TO AIRPORT		MILES
6	HARTSFIELD JACKSON	68



JEFFERSON LOGISTICS CENTER

Colliers

Harrison Marsteller
harrison.marsteller@colliers.com
+1 (404) 877 9219

Darren Ross
darren.ross@colliers.com
+1 (404) 877 9279

Logan Devereaux
logan.devereaux@colliers.com
+1 (770) 696 3092

This document/email has been prepared by Colliers for advertising and general information only. Colliers makes no guarantees, representations or warranties of any kind, expressed or implied, regarding the information including, but not limited to, warranties of content, accuracy and reliability. Any interested party should undertake their own inquiries as to the accuracy of the information. Colliers excludes unequivocally all inferred or implied terms, conditions and warranties arising out of this document and excludes all liability for loss and damages arising there from. This publication is the copyrighted property of Colliers and /or its licensor(s). © 2026. All rights reserved. This communication is not intended to cause or induce breach of an existing listing agreement. (Colliers International - Atlanta, LLC)

