



Chris Johnson, SIOR

Executive Vice President
+1 503 542 5884
chris.johnson@colliers.com

Brett Johnson

Associate Vice President
+1 503 499 0067
brett.johnson@colliers.com

Colliers

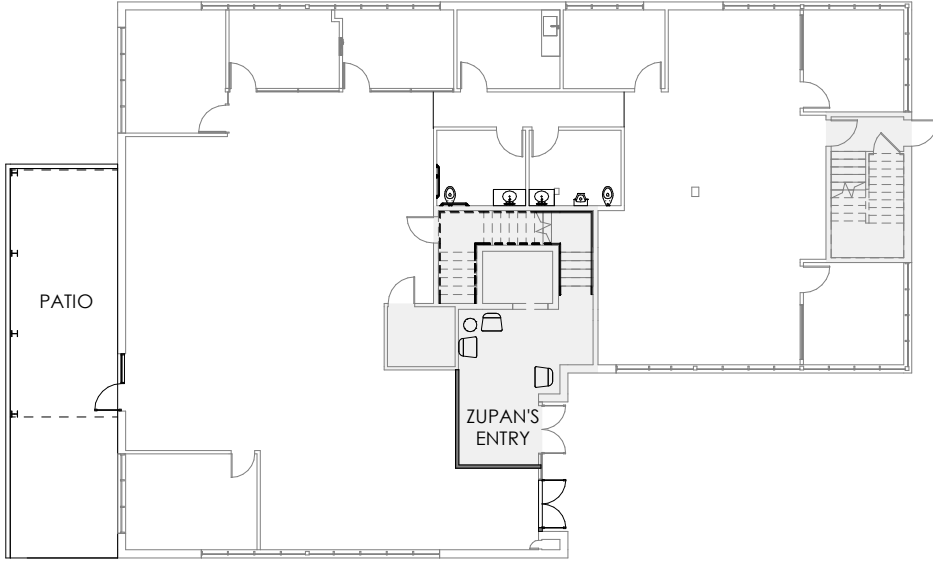
851 SW Sixth Avenue, Suite 1600
Portland, Oregon 97204
Main: +1 503 223 3123
colliers.com

For Lease 4,572 SF Office

5711 S Hood Ave, Portland, OR 97239

- Ground floor office with private entry
- Available 4/1/26 but potential to occupy sooner
- 9,702 SF total building size
- Convenient John's Landing location off of S Macadam Ave with great access to I-5
- Significant capital improvements to interior and exterior
- 3/1,000 parking plus additional street parking
- Adjacent warehouse space also available
- Call for rates

5711 S Hood Ave



3/1000

onsite surface plus additional street parking

4,572 SF Available

New patio and terrace



Chris Johnson, SIOR
Executive Vice President
+1 503 542 5884
chris.johnson@colliers.com

Brett Johnson
Associate Vice President
+1 503 499 0067
brett.johnson@colliers.com



3 miles
TO DOWNTOWN PORTLAND

14 miles
TO PDX AIRPORT

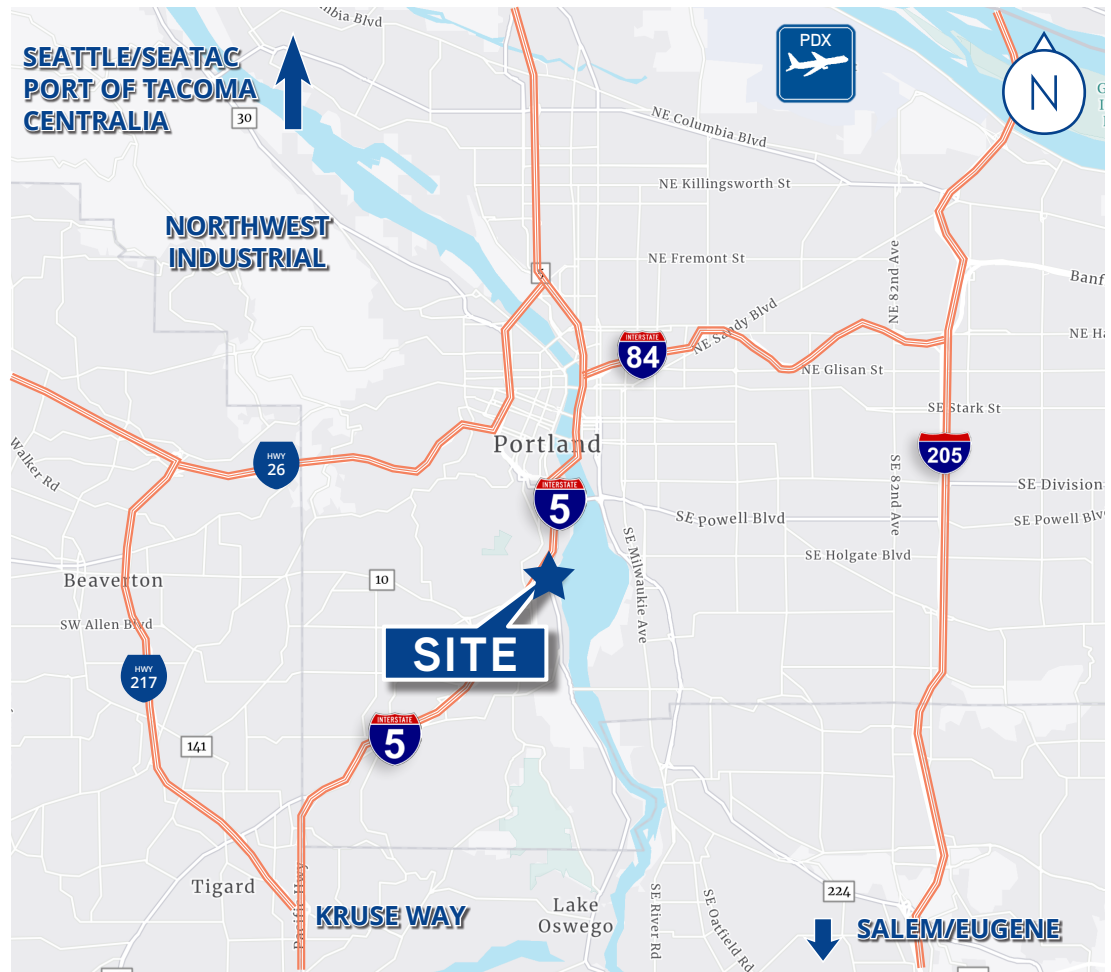
7 miles
TO KRUSE WAY

9 miles
TO 

2 miles
TO 

176 miles
TO SEATTLE, WA

110 miles
TO EUGENE, OR



Contact us:

Chris Johnson, SIOR
Executive Vice President
+1 503 542 5884
chris.johnson@colliers.com

Brett Johnson
Associate Vice President
+1 503 499 0067
brett.johnson@colliers.com

