

FOR LEASE > STEEL ASSEMBLY PLANT



# 75 Neal Court

PLAINVILLE, CT 06062



## 75 Neal Court > Steel Assembly Plant

75 Neal Court is a +/-200,000 SF industrial facility with rail and multiple cranes plus warehouse and shop space located in Plainville, Connecticut. This former steel assembly plant is situated on 11.25 acres and has 2,000 SF of office space and outside storage.

### DIRECTIONS

From Hartford, take I-84 to CT-72W. Take Exit #2. Turn left on New Britain Avenue. Turn right on Neal Court.

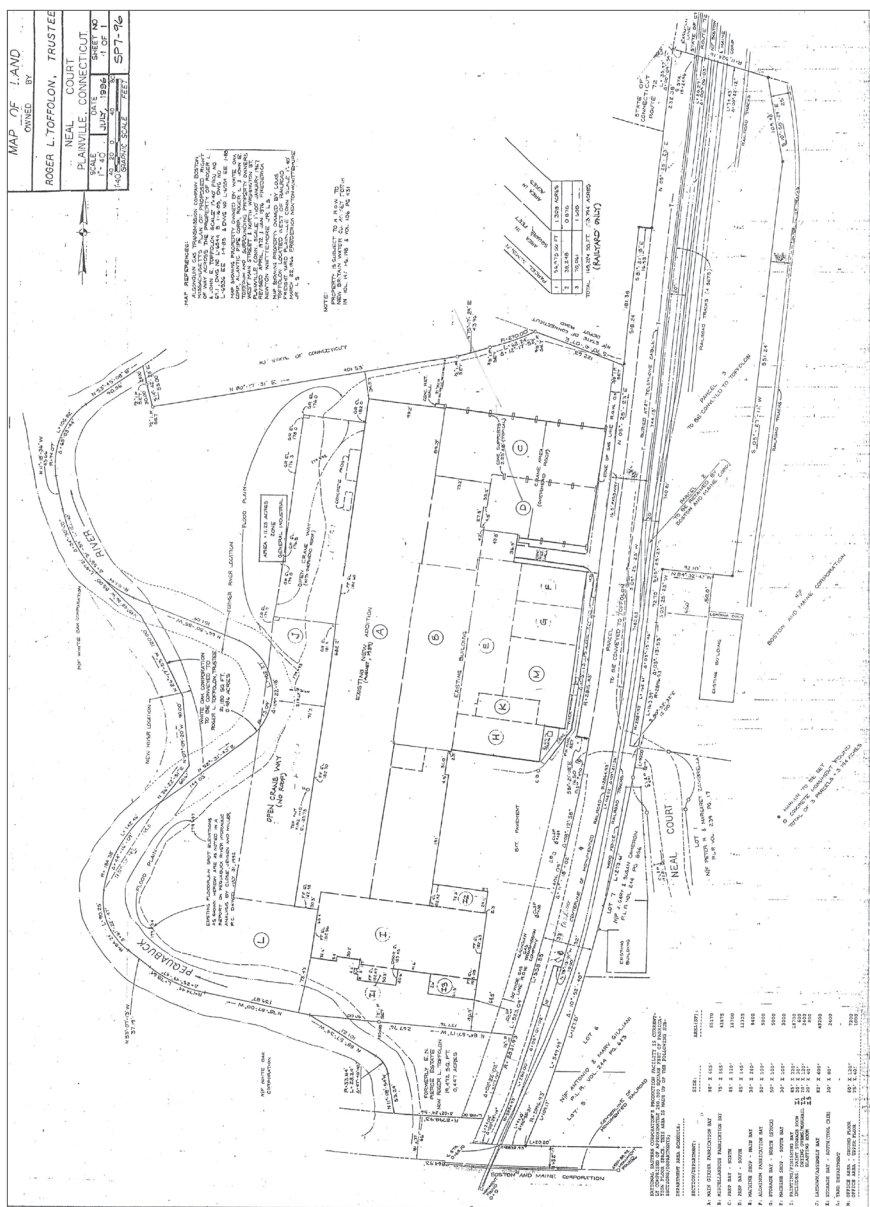
## Building Amenities

- > +/- 100,000 SF available for lease; Will subdivide to +/-5,000 SF
- > 2,000 SF air-conditioned office space
- > Warehouse and shop space
- > Freestanding industrial buildings with 7 drive-in-doors (12' x 20')
- > Multiple cranes up to 40-tons
- > Rail to site & ample parking
- > Heavy power: 2,000 amps, 480 volts, Phase 3
- > Lease Rate: \$3.50/SF NNN

NICHOLAS R. MORIZIO, CRE, SIOR  
860 616 4022  
HARTFORD, CT  
nicholas.morizio@colliers.com

DAVID RICHARD  
860 616 4026  
HARTFORD, CT  
david.richard@colliers.com

COLLIERS INTERNATIONAL  
864 Wethersfield Avenue  
Hartford, CT 06114  
www.colliers.com



NICHOLAS R. MORIZIO, CRE, SIOR  
860 616 4022  
HARTFORD, CT  
[nichoklas.morizio@colliers.com](mailto:nichoklas.morizio@colliers.com)

AGENT: DAVID RICHARD  
860 616 4026  
HARTFORD, CT  
[david.richard@colliers.com](mailto:david.richard@colliers.com)

**COLLIERS INTERNATIONAL**  
864 Wethersfield Avenue  
Hartford, CT 06114  
860 249 6521 Main  
860 247 4067 Fax  
[www.colliers.com](http://www.colliers.com)

