

# CRISMON GATEWAY

NEC Crismon Rd & Baseline Rd, Mesa, AZ



**PHILIP WURTH, CCIM**  
EXECUTIVE VICE PRESIDENT  
480 655 3310 DIR  
[philip.wurth@colliers.com](mailto:philip.wurth@colliers.com)  
[www.evoffices.com](http://www.evoffices.com)



**COLLIERS INTERNATIONAL**  
8360 E Raintree Dr. Ste 130  
Scottsdale, AZ 85260  
[www.colliers.com/greaterphoenix](http://www.colliers.com/greaterphoenix)

# CRISMON GATEWAY > NEC CRISMON RD & BASELINE RD • MESA, AZ



**\$19.00 NNN**  
LEASE RATE

**\$195 PSF**  
SALE PRICE



**4-Story**  
BUILDING



**5/1,000**  
PARKING



**1,000,000+ SF**  
RETAIL WITHIN  
1 MILE



**±20,000 SF**  
BUILDING SIZE



**C-2**  
ZONING

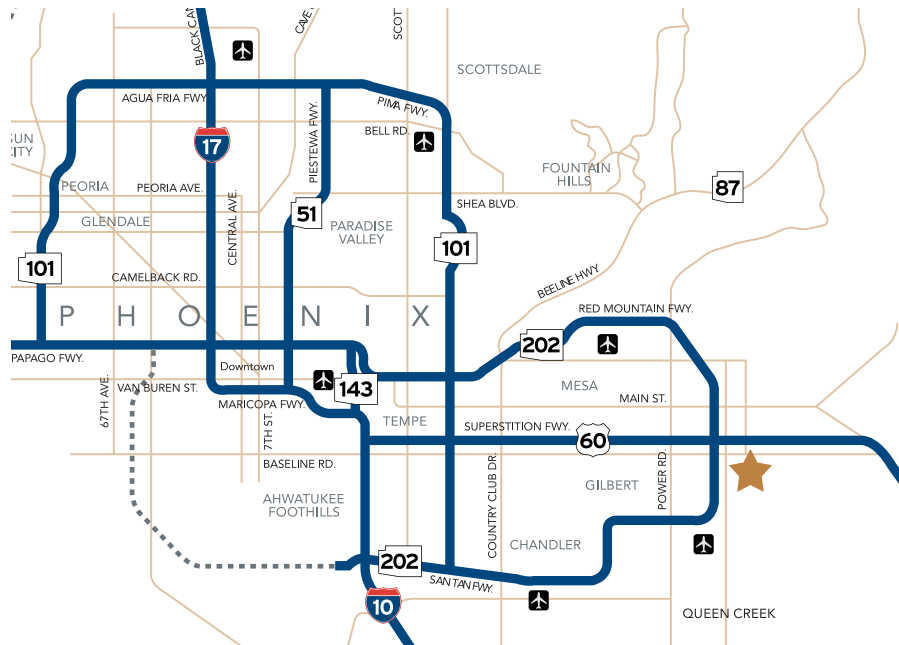


**2018**  
DELIVERY

- ▶ Highly visible project identifier fronting Crismon Rd.
- ▶ Adjacent to Banner Healthcare's 10.5 acre medical campus featuring emergency care, an imaging center, general and specialty healthcare physicians, pharmacy and outpatient surgery center
- ▶ Within minutes to Mountain Vista Medical Center, Banner Baywood Hospital and Banner Higley Hospital
- ▶ Major thoroughfare through DMB's EastMark master-planned community
- ▶ Spectacular views of the Superstition Mountains



# CRISMON GATEWAY > AMENITY MAP





# CRISMON GATEWAY > SITE PLAN AND DEMOGRAPHICS



## \*RETAIL SHOPS

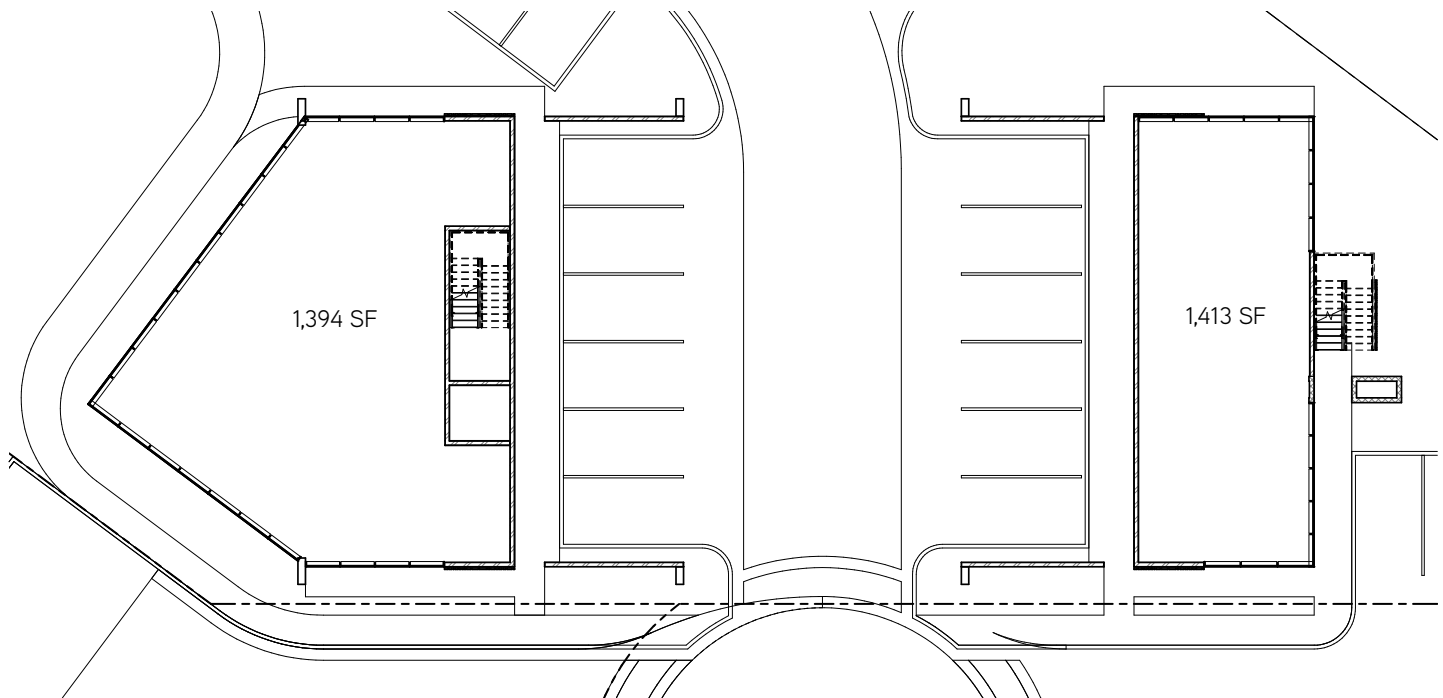
- > Black Rock Coffee
- > El Bella Day Spa
- > Filiberto's Mexican Food
- > Radius Fitness

Demographics			
Description	1 Mile	3 Mile	5 Mile
2017 Total Population	11,818	90,545	184,842
2022 Estimated Population	12,685	98,055	200,562
2017 Median HH Income	\$79,321	\$53,130	\$51,632

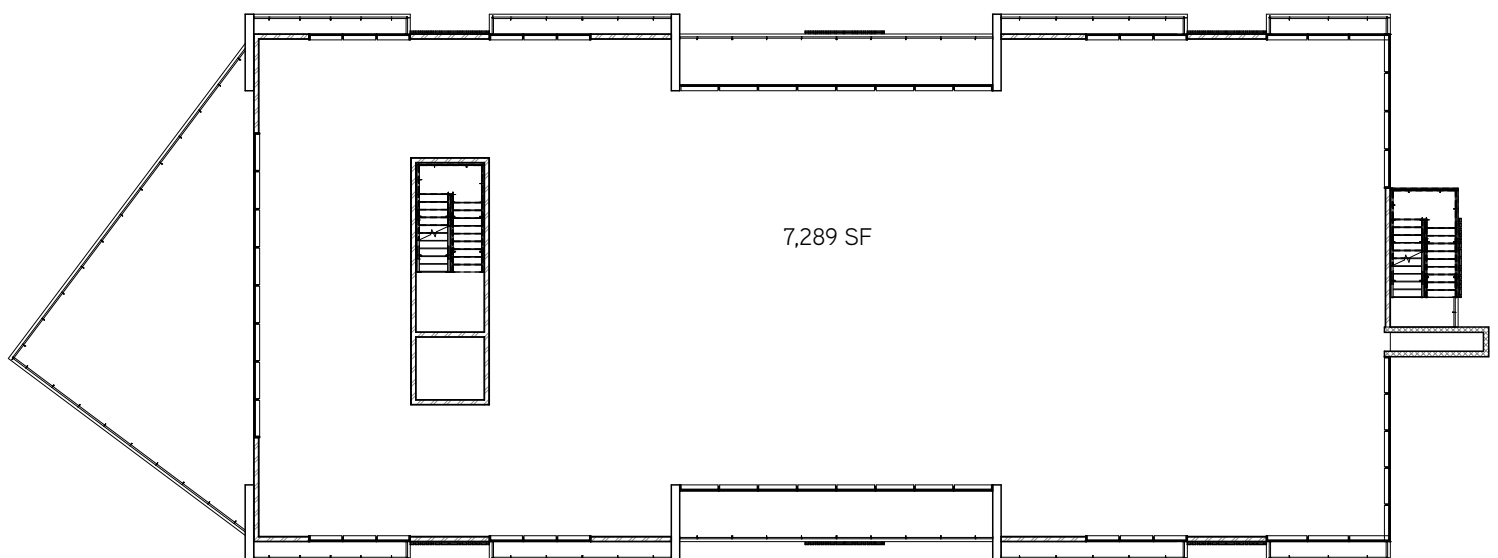
  

Traffic Counts	
Baseline Rd. and Crismon Rd.	46,500 VPD

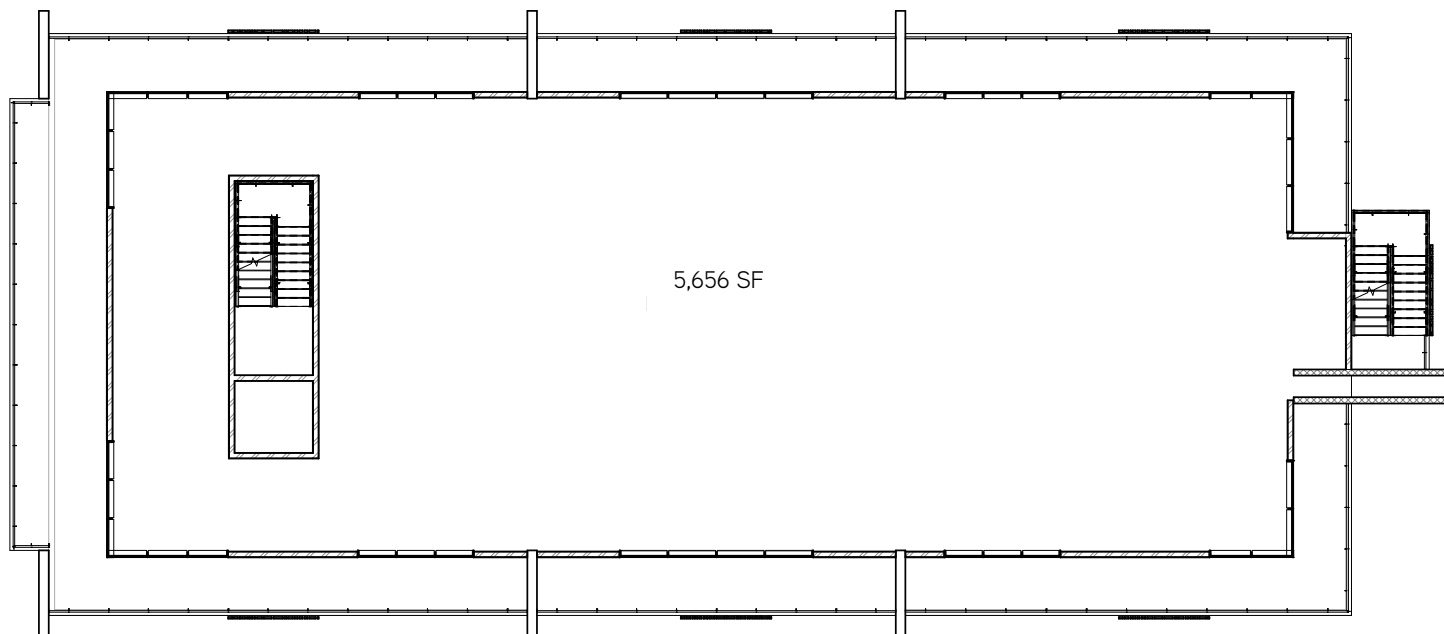
## FIRST FLOOR



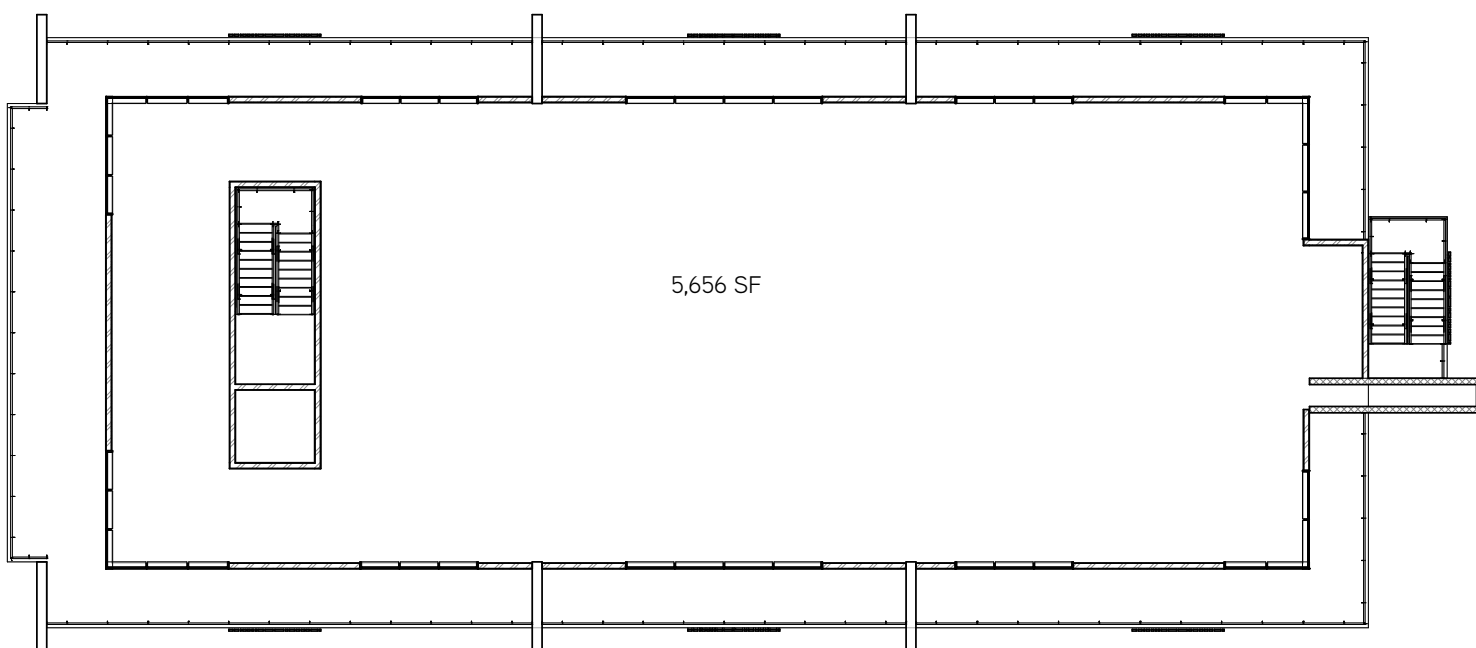
## SECOND FLOOR



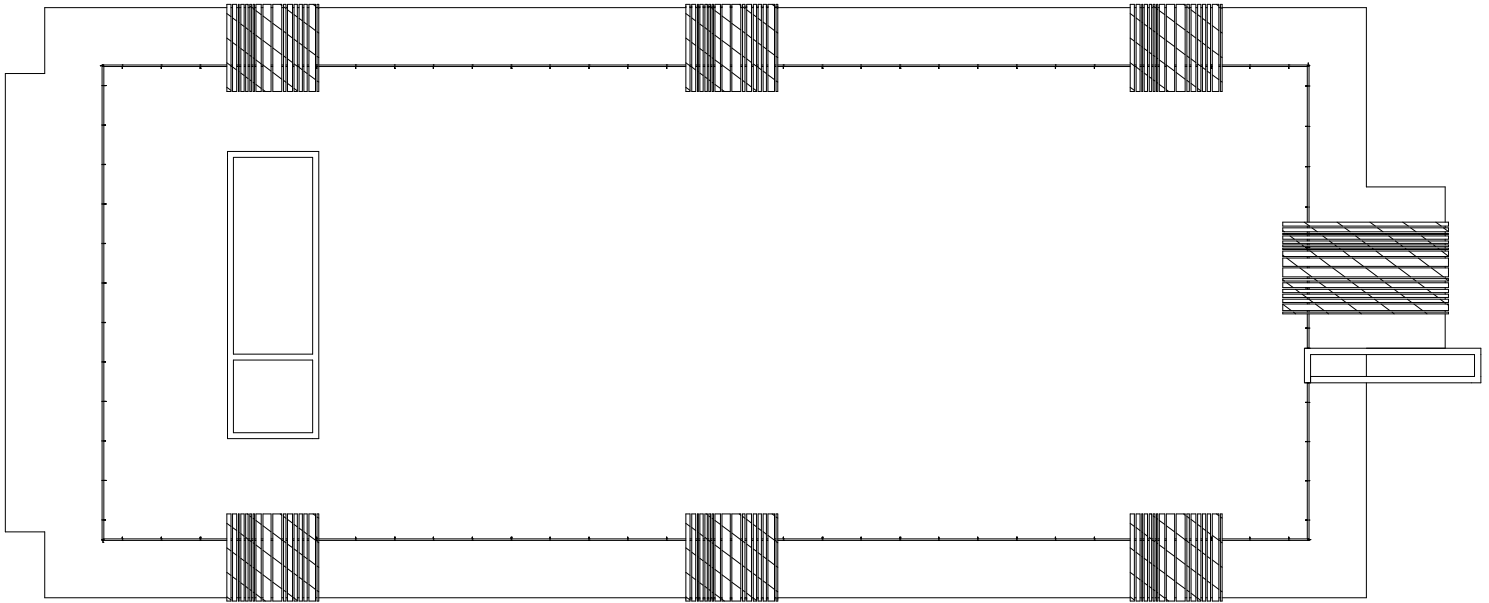
## THIRD FLOOR



## FOURTH FLOOR



## ROOFTOP ENTERTAINMENT DECK



PHILIP WURTH, CCIM | 480 655 3310 | [philip.wurth@colliers.com](mailto:philip.wurth@colliers.com)

This document/email has been prepared by Colliers International for advertising and general information only. Colliers International makes no guarantees, representations or warranties of any kind, expressed or implied, regarding the information including, but not limited to, warranties of content, accuracy and reliability. Any interested party should undertake their own inquiries as to the accuracy of the information. Colliers International excludes unequivocally all inferred or implied terms, conditions and warranties arising out of this document and excludes all liability for loss and damages arising there from. This publication is the copyrighted property of Colliers International and/or its licensor(s). © 2018. All rights reserved.



COLLIERS INTERNATIONAL  
8360 E Raintree Dr. Ste. 130  
Scottsdale, AZ 85260  
[www.colliers.com/greaterphoenix](http://www.colliers.com/greaterphoenix)