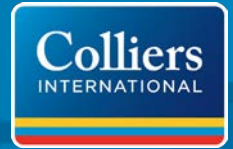


FOR LEASE > RETAIL



Freestanding Retail - St. Petersburg

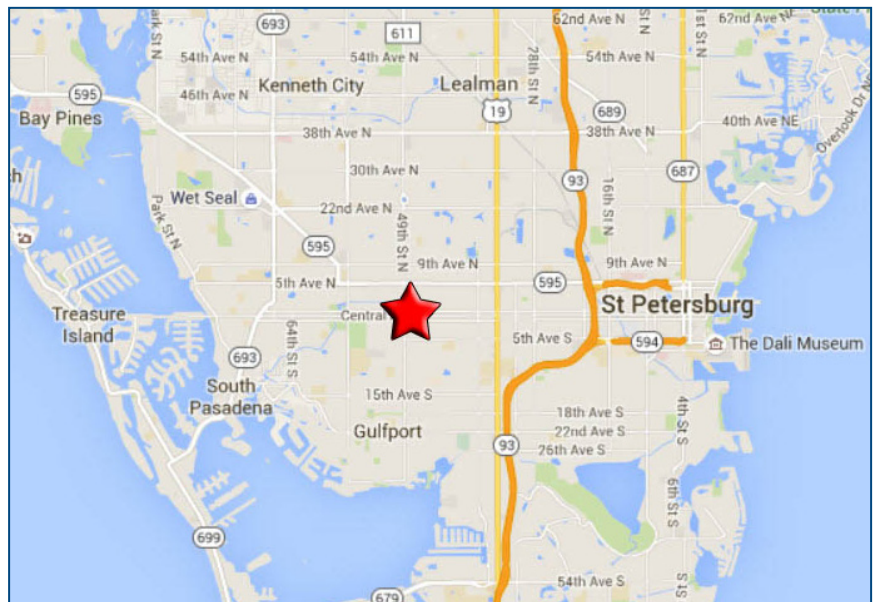
4901 CENTRAL AVENUE, ST. PETERSBURG, FL 33710



10,908 SF AVAILABLE

Freestanding Retail > Features

- > 10,908 SF Available Immediately
- > High daytime population of 51,411 within 3-miles and total population of 265,095 within 5-miles
- > Existing school buildout
- > 16,357 cars per day on 49th St North and 12,227 cars per day on Central Avenue
- > Prominent visibility with traffic light controlled access



LISA McCAFFREY
Executive Managing Director
Retail Services
+1 813 871 8519
lisa.mccaffrey@colliers.com

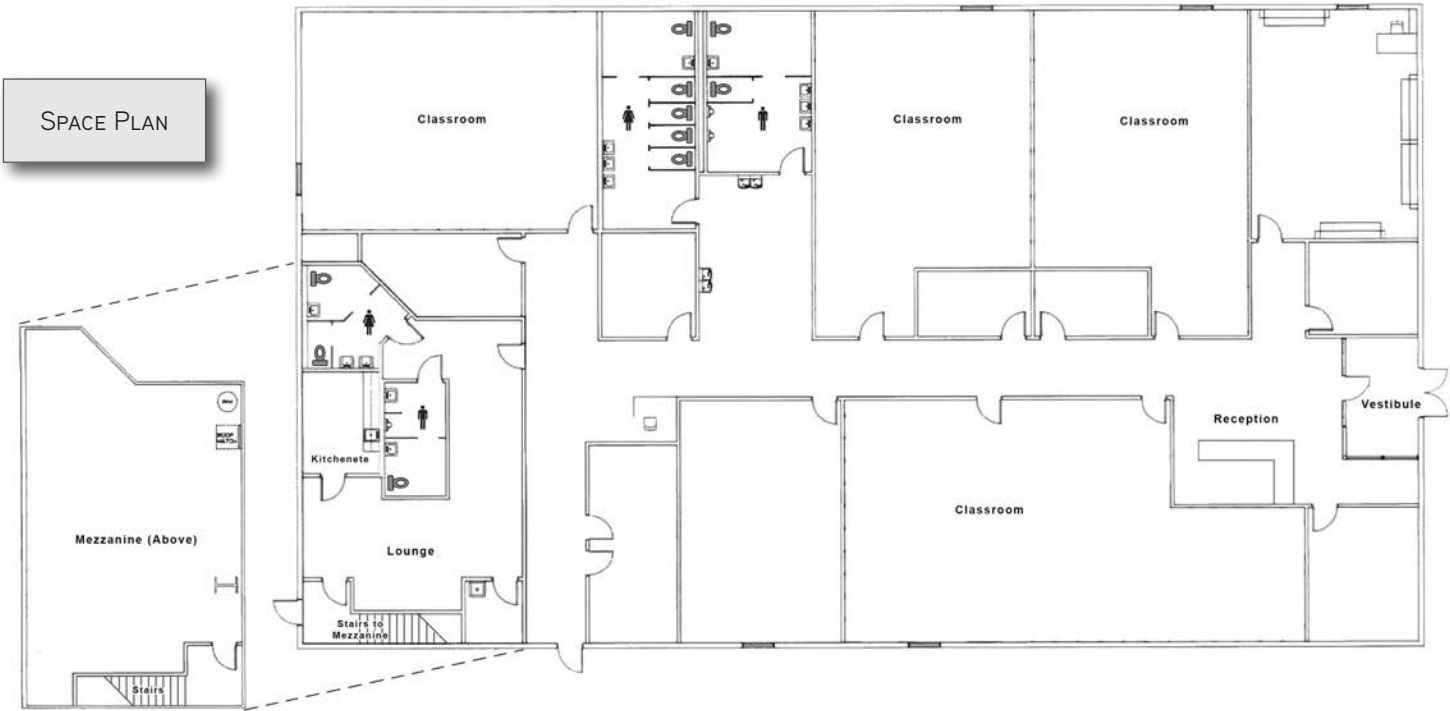
BRITNEY MROCZKOWSKI, CCIM
Senior Associate
Retail & Land Services
+1 813 871 8520
britneym@colliers.com

COLLIERS INTERNATIONAL
TAMPA BAY FLORIDA
4830 W. Kennedy Blvd., Suite 300
Tampa, FL 33609
www.colliers.com

Freestanding Retail > Site Plan



DEMOGRAPHICS			
	1 Mile	3 Miles	5 Miles
Total Population	14,381	109,978	265,095
Daytime Population	5,517	51,411	132,005
Avg. HH Income	\$49,110	\$52,673	\$55,269
Median Age	40.8	44.0	45.8



This document has been prepared by Colliers International Tampa Bay Florida for advertising and general information only. Colliers International Tampa Bay Florida makes no guarantees, representations or warranties of any kind, expressed or implied, regarding the information including, but not limited to, warranties of content, accuracy and reliability. Any interested party should undertake their own inquiries as to the accuracy of the information. Colliers International Tampa Bay Florida excludes unequivocally all inferred or implied terms, conditions and warranties arising out of this document and excludes all liability for loss and damages arising there from. This publication is the copyrighted property of Colliers International and/or its licensor(s). © 2016. All rights reserved.

