

The Colliers logo is a dark blue rectangle with the word "Colliers" in white serif font. Below the text are three horizontal stripes in yellow, red, and blue from top to bottom.

Colliers

The Subway logo is a large, 3D-style sign with the word "SUBWAY" in white letters with green outlines, set against a green background with yellow arrows pointing outwards.

SUBWAY

The Direct logo features the word "Direct" in red with a white outline, and "AUTO & LIFE INSURANCE" in smaller red letters below it.

Direct
AUTO & LIFE INSURANCE

The TruGreen Pharmacy logo has "TRUGREEN" in red above "PHARMACY" in red, with a small green leaf icon to the right.

TRUGREEN
PHARMACY

The Knox's logo consists of the word "KNOX'S" in a stylized, multi-colored font.

KNOX'S

The Knox's logo consists of the word "KNOX'S" in a stylized, multi-colored font.

KNOX'S

The Knox's logo consists of the word "KNOX'S" in a stylized, multi-colored font.

KNOX'S

1505

NOW
FRESHLY
SLICING

SLICING
DELI
MEATS

Direct
1044

Direct
FREE
QUOTES

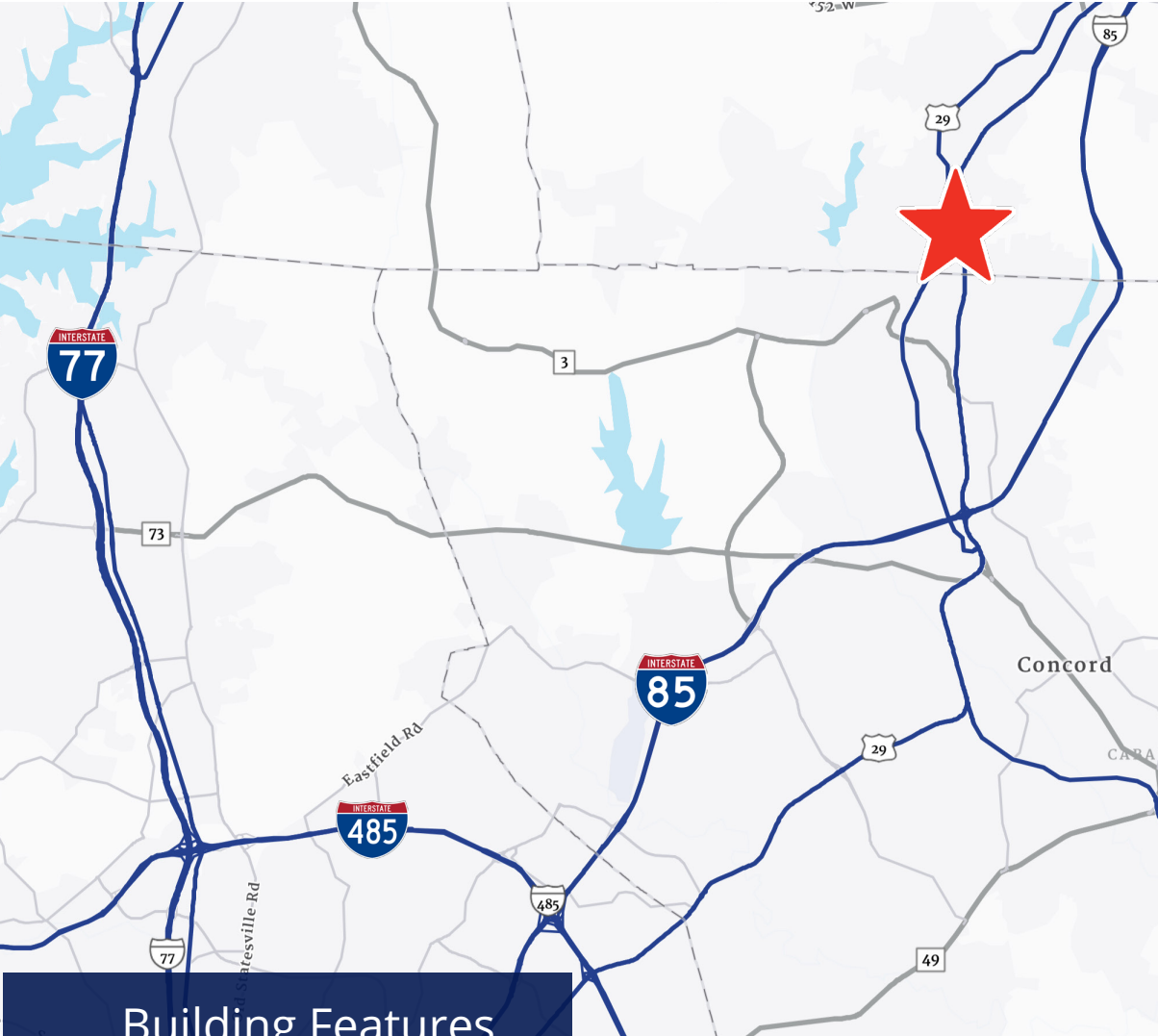
1515 Cannon Blvd

Kannapolis, NC 28083

Leasing Opportunities

Contact Us

Phil Corriher CCIM, CRX, CRRP
Senior Vice President | Retail Services
+1 704 409 2371
phil.corriher@colliers.com



Demographics

| | 1 Mile | 3 Mile | 5 Mile |
|--------------------------|----------|----------|----------|
| Population | 7,580 | 39,572 | 75,683 |
| Total Household | 2,965 | 15,748 | 30,044 |
| Average Household Income | \$69,185 | \$80,182 | \$88,978 |
| Daytime Population | 5,536 | 32,241 | 64,144 |
| Total Businesses | 225 | 1,008 | 2,128 |
| Total Employees | 1,341 | 9,382 | 22,191 |

Availability

| Suite Number | Size |
|--------------|----------|
| 1505 | 1,400 SF |
| 1513 | 1,270 SF |

Basic Lease Rate

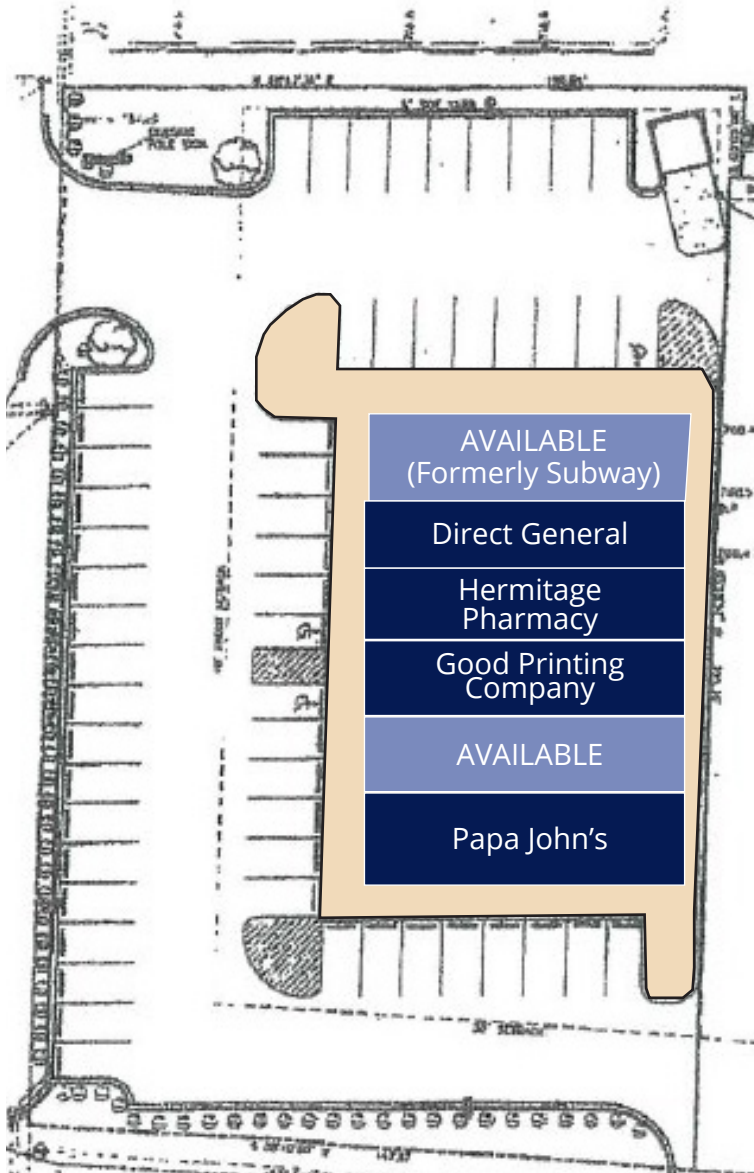
Lease Rate: \$26.00/PSF + \$7.69/PSF NNN

Building Features

- 1,400 SF (Formerly Subway) and 1,270 SF Available
- Easy ingress / egress with multiple access points
- On site monument signage available
- Neighboring tenants include: Planet Fitness, Dollar Tree, Walmart, Sams Club, Lowes, Taco Bell, Salvation Army, Gabes, Family Dollar and Wendy's.
- Lease Rate: \$26.00/PSF + \$7.69/PSF NNN

1515 Cannon Blvd

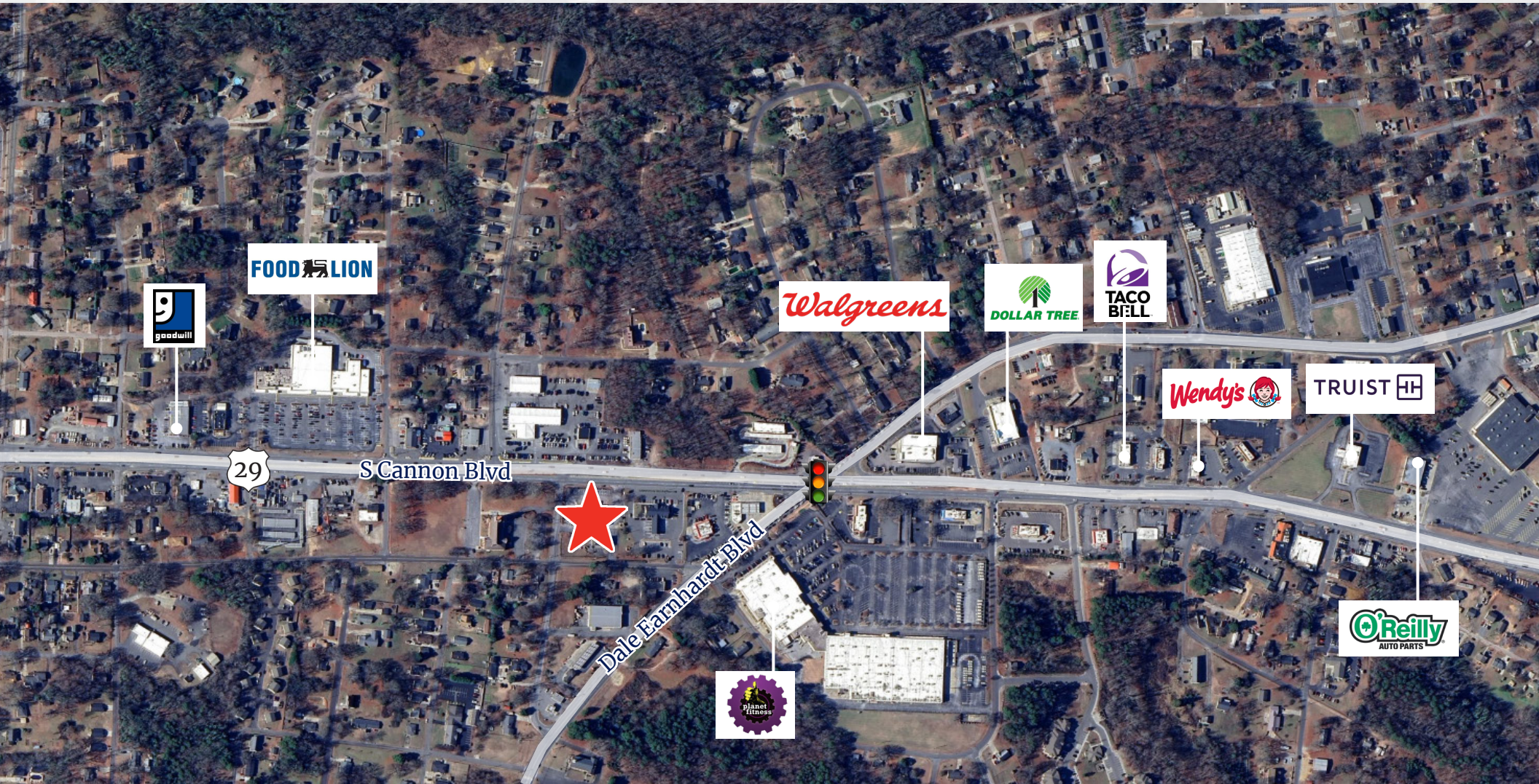
Kannapolis, NC



Tenant Roster

| Suite | Tenant | SF |
|----------|-----------------------|-------|
| 1505 | AVAILABLE | 1,400 |
| 1507 | Direct General | 1,050 |
| 1509 | Hermitage Pharmacy | 1,146 |
| 1511 | Good Printing Company | 1,130 |
| 1513 | AVAILABLE | 1,270 |
| 1515 | Papa John's | 1,400 |
| Total SF | | 7,396 |

Location



REGIONAL DISTANCES



1.9 Miles



17.3 Miles



26.8 Miles



28.4 Miles



300 W. Summit Avenue
Suite 200
Charlotte, NC 28203
P: +1 704 409 9933
F: +1 704 409 9934
colliers.com/charlotte

Contact Us

Phil Corriher, CCIM, CRX, CRRP
Senior Vice President | Retail Services
+1 704 409 2371
phil.corriher@colliers.com



Copyright © 2025 Colliers

The information contained herein has been obtained from sources deemed reliable. While every reasonable effort has been made to ensure its accuracy, we cannot guarantee it. No responsibility is assumed for any inaccuracies. Readers are encouraged to consult their professional advisors prior to acting on any of the material contained in this report.