

Medical Office Close to St. Joe's

3145 Clark Rd, Ypsilanti, MI 48197



Listing ID: 30106755
Status: Active
Property Type: Office For Lease
Office Type: Medical
Contiguous Space: 4,990 SF
Total Available: 4,990 SF
Lease Rate: \$27 PSF (Annual)
Base Monthly Rent: \$11,227
Lease Type: Modified Gross
Ceiling: 9 ft.



Overview/Comments

Built out and move in ready office space on 2nd floor of Clark Professional Office Plaza. Close proximity to St. Joseph Mercy Hospital, Eastern Michigan University, and Washtenaw Community College. Excellent for a 5,000 SF medical practice.

Great location with ample parking and easy access to all freeways.

Let us move you in! We can help cover the cost. Call agent now for more details.

More Information Online

<http://www.cpix.net/listing/30106755>

QR Code

Scan this image with your mobile device:



General Information

Taxing Authority:	Ypsilanti Township	Building Name:	Clark Professional Office Plaza
Tax ID/APN:	K-11-06-210-005 & 006	Class of Space:	Class B
Office Type:	Medical	Gross Building Area:	40,899 SF
Zoning:	B3		

Available Space

Suite/Unit Number:	201	Space Type:	Sublet
Suite Floor/Level:	2nd	Date Available:	07/01/2017
Space Available:	4,990 SF	Lease Term (Months):	60 Months
Minimum Divisible:	4,990 SF	Lease Rate:	\$27 PSF (Annual)
Maximum Contiguous:	4,990 SF	Lease Type:	Modified Gross
Space Description:	Waiting room, reception/office, 5 offices, 12 exam rooms, 2 labs, 2 bathrooms.		

Area & Location

Property Located Between:	Clark & Golfside	Highway Access:	Access to US-23 1 mile west of the complex. From there access to I-94.
Property Visibility:	Good	Airports:	Ann Arbor Airport, Willow Run & Detroit Metro

Building Related

Total Number of Buildings:	1	Parking Ratio:	2 (per 1000 SF)
Number of Stories:	4	Parking Type:	Surface
Typical SF / Floor:	10,000 SF	Total Parking Spaces:	79
Year Built:	1984	Ceiling Height:	9
Roof Type:	Flat	Passenger Elevators:	2
Construction/Siding:	Brick	Freight Elevators:	0

Heat Type: Natural Gas
Heat Source: Central
Air Conditioning: Package Unit

Land Related

Water Service: Municipal
Sewer Type: Municipal

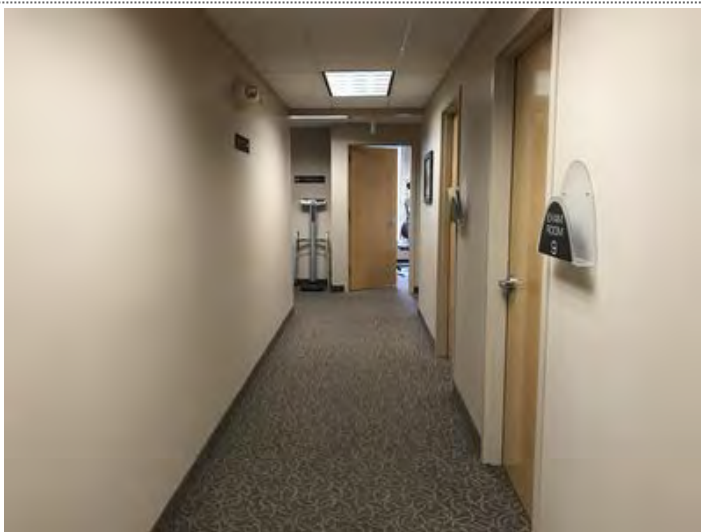
Zoning Description The B-3 general business districts are designed to provide sites for more diversified business types which would often be incompatible with the pedestrian movement in the local business district or the community business district. Principal uses permitted: In a general business district, no building or land shall be used and no building shall be erected except for one or more of the following specified uses unless otherwise provided in this ordinance: Any retail business or service establishment permitted in B-1 and B-2 districts as principal uses permitted, subject to the regulations applicable in the following sections of this ordinance. Any retail business or service establishment permitted and as regulated in B-1 and B-2 districts as uses permitted subject to special conditions. Bus passenger stations. New and used car salesroom, showroom or office. Other uses similar to the above uses. Other structures customarily incident to the above permitted uses. Secondhand apparel businesses whose principal activity is devoted to the sale of secondhand apparel. Pawnbrokers, secondhand dealers, and junk dealers are not uses permitted under this section.

Location

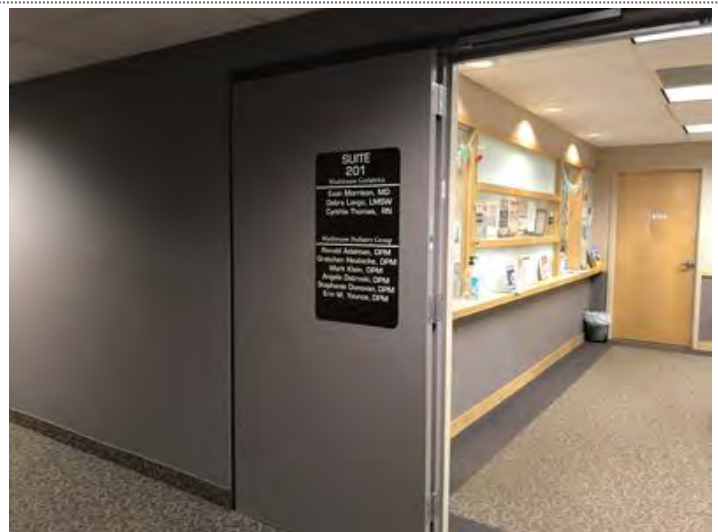
Address: 3145 Clark Rd, Ypsilanti, MI 48197
County: Washtenaw
MSA: Ann Arbor
Submarket: Washtenaw E of 23



Property Images



Suite 201



Suite 201, View 2



Signage



Main Entrance Lobby



Building-Front

Property Contacts



James H. Chaconas

Colliers International
734-769-5005 [O]
jim.chaconas@colliers.com

3145 Clark Rd, Ste 201
4,990 +/- Sq. Ft.

