

FOR LEASE > SHELL WAREHOUSE/STORAGE SPACE



# 20 Bryce Industrial Drive

GARDEN CITY, GA 31405



## Property Highlights

- > Shell warehouse and storage space available for lease
- > 10 x 12 roll up doors with each unit
- > Zoned Light Industrial, Garden City
- > Located off of Dean Forest Road only a short distance to the Port and Interstate -16
- > Flexible lease terms

## Units

UNIT 1: 3,200 SF  
(Available June 1st, 2019)

UNIT 4 - 9: 800 SF each

**ASKING PRICE:** *Price on Request*

SEBASTIAN FINDLAY  
Associate  
912 483 6160  
sebastian.findlay@colliers.com

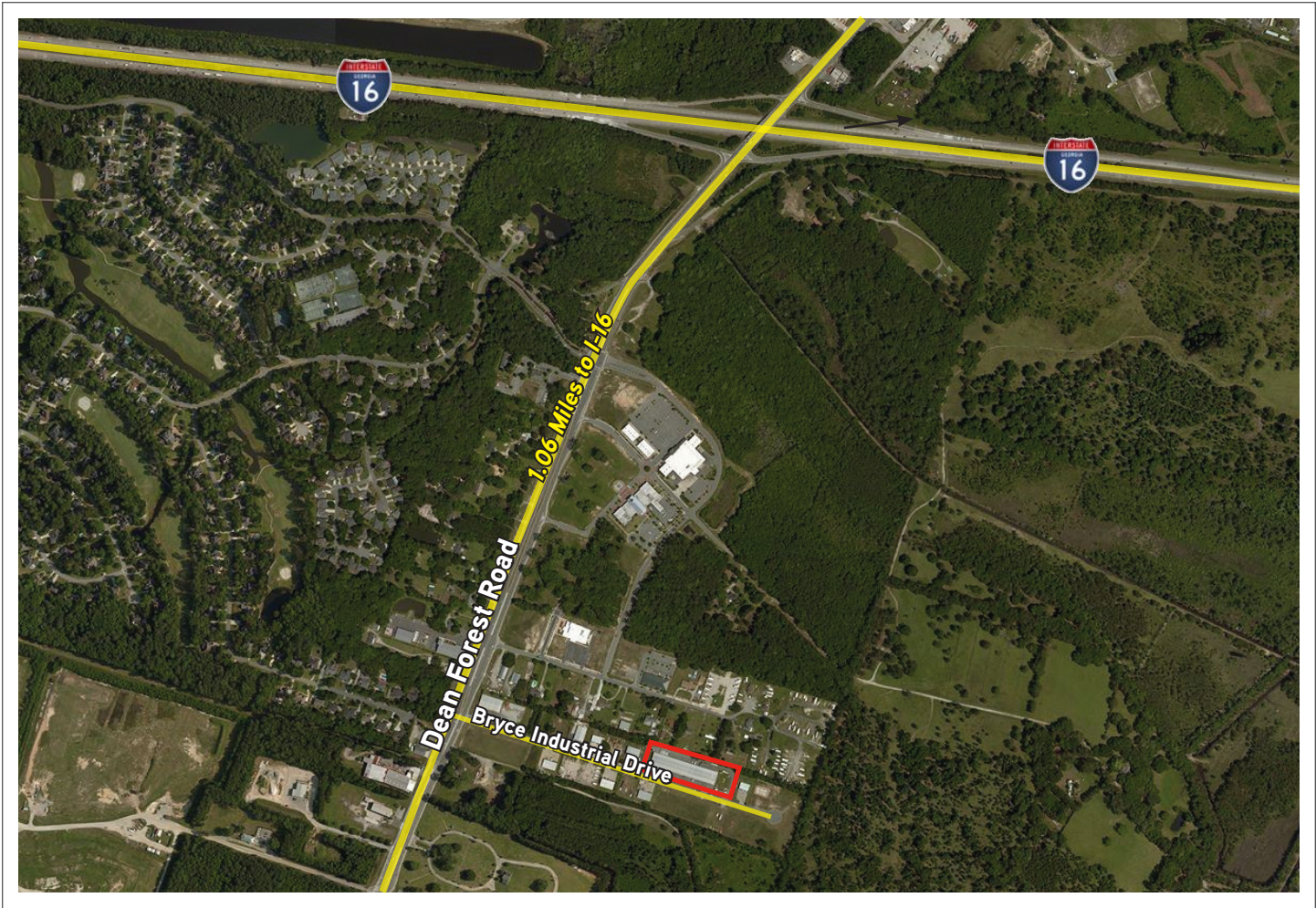
COLLIERS INTERNATIONAL  
545 E. York Street  
Savannah, GA 31401  
www.colliers.com



FOR LEASE > SHELL WAREHOUSE/STORAGE SPACE

# 20 Bryce Industrial Drive

GARDEN CITY, GA 31405



## Location Characteristics

INTERSTATE-16 >	±1.1 Miles	DOWNTOWN SAVANNAH >	±8.3 Miles
HIGHWAY 17 >	±1.9 Miles	OCEAN TERMINAL >	±8.9 Miles
INTERSTATE-95 >	±3.6 Miles	SAVANNAH HH INT'L AIRPORT >	±9.9 Miles
POOLER >	±6.9 Miles	RICHMOND HILL, GA >	±11.9 Miles
PORT OF SAVANNAH >	±7.2 Miles	RINCON, GA >	±20.9 Miles

The information contained herein has been obtained from sources deemed reliable. While every reasonable effort has been made to ensure its accuracy, we cannot guarantee it. No responsibility is assumed for any inaccuracies. Readers are encouraged to consult their professional advisers prior to acting on any of the material contained in this report.

