

FOR SALE > LAND

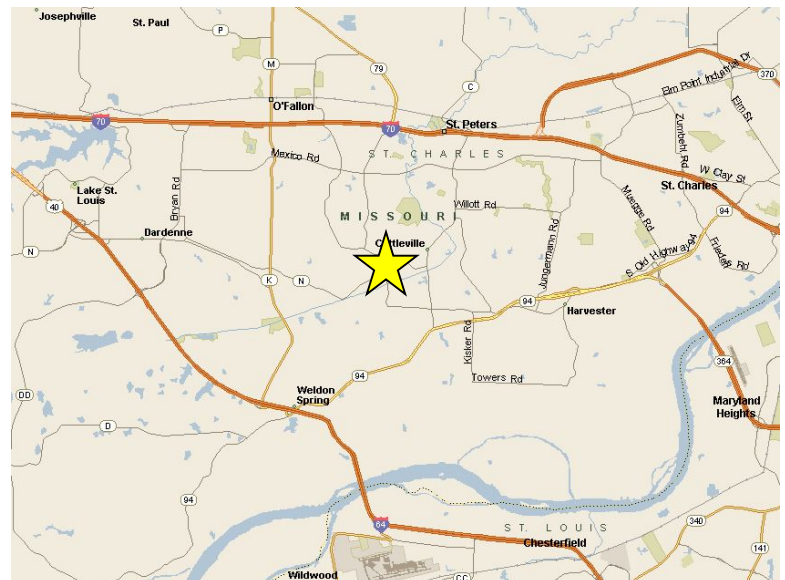
# 211 STEEL STREET

ST. PETERS, MO 63376



## Property Features

- > Up to 2.97 AC available
- > Located at southwest corner of Cottleville Parkway and Weiss Road
- > Near 4-way lighted intersection
- > Great accessibility from Mid Rivers Mall Drive
- > Site is zoned Agricultural
- > Great traffic counts at this intersection
- > Neighbors St. Charles Community College and Francis Howell School District
- > ~~SALE PRICE: \$258,746 (\$2.00/SF)~~
- > **NEW SALE PRICE: \$226,403 (\$1.75/SF)**



## Contact Us

GEOFFREY R. ORF  
DIR +1 314 584 6255  
MOB +1 314 503 0146  
[geoff.orf@colliers.com](mailto:geoff.orf@colliers.com)

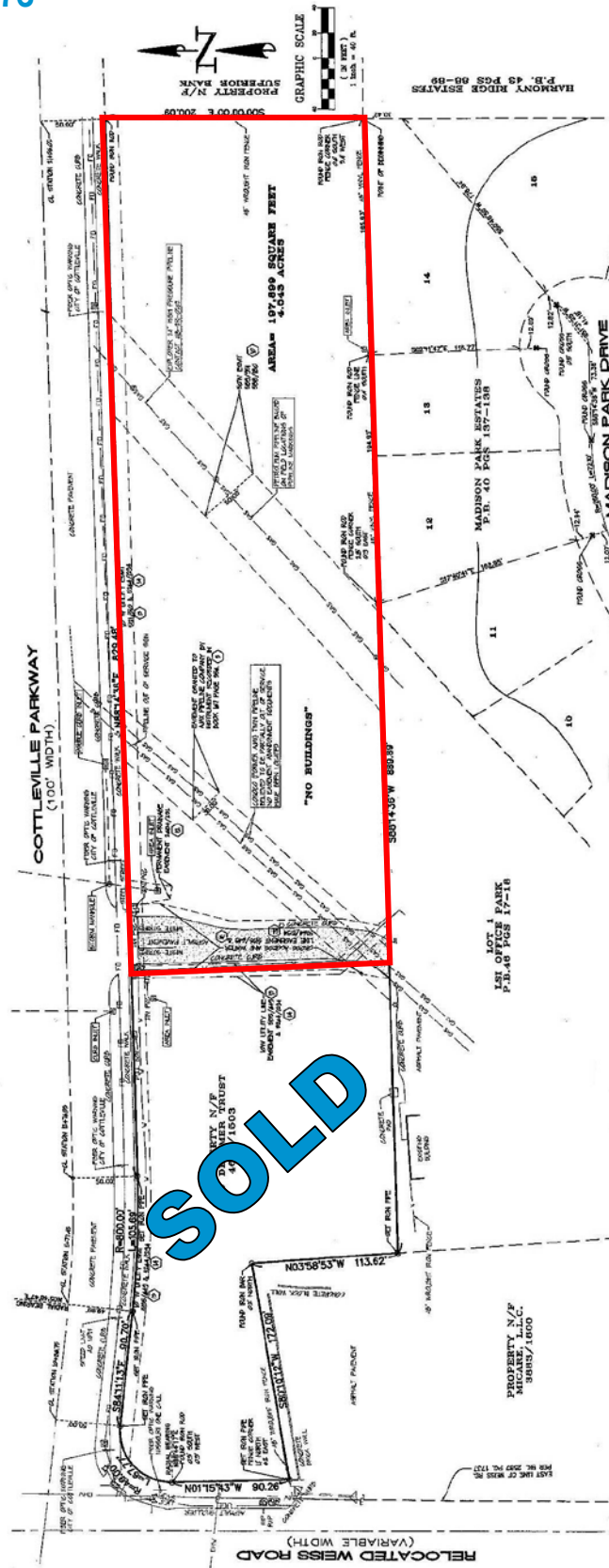
CHAD J. BURKEMPER  
DIR +1 314 584 6279  
MOB +1 636 579 9020  
[chad.burkemper@colliers.com](mailto:chad.burkemper@colliers.com)

COLLIERS | ST. LOUIS  
101 South Hanley Road, Suite 1400  
St. Louis, MO 63105  
[www.colliers.com](http://www.colliers.com)

Although all information furnished regarding property for sale, rental or financing is from sources deemed reliable, such information has not been verified, and no express representation is made nor is any to be implied as to the accuracy thereof, and it is submitted subject to errors, omissions, change of price, rental or other conditions, prior sale, lease or financing, or withdrawal without notice.

# 211 STEEL STREET

ST. PETERS, MO 63376



Although all information furnished regarding property for sale, rental or financing is from sources deemed reliable, such information has not been verified, and no express representation is made nor is any to be implied as to the accuracy thereof, and it is submitted subject to errors, omissions, change of price, rental or other conditions, prior sale, lease or financing, or withdrawal without notice.

Colliers  
INTERNATIONAL