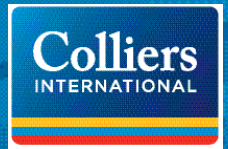


FOR LEASE

Stonemill Center

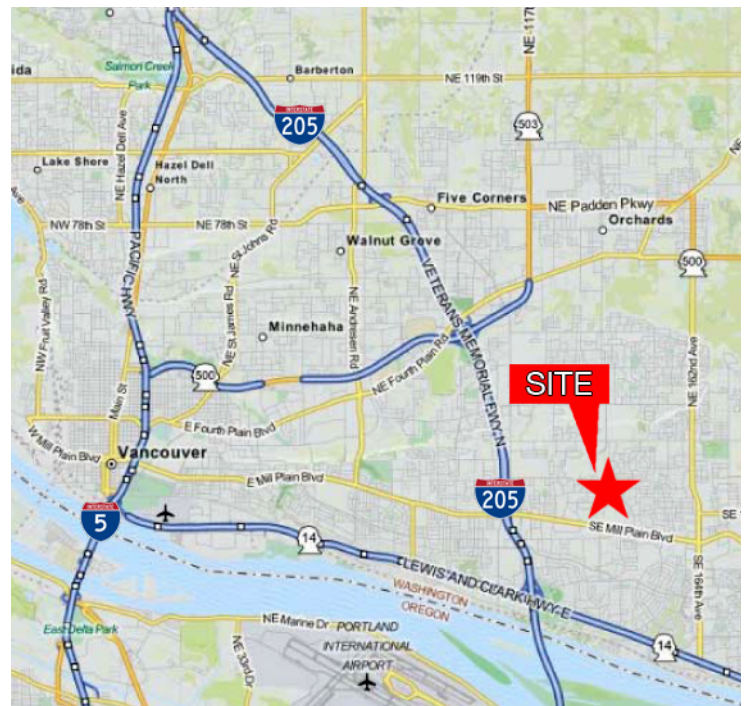
120 NE 136TH AVENUE, VANCOUVER, WA 98684



120 NE 136th Avenue Vancouver, Washington 98684

- Building A availability:
17,458 SF:
- Building B availability:
Suite A1: 1,385 SF
Suite D1: 2,018 SF
Suite 205: 1,162 SF
Can combine D1 and 205 for 3,180 SF
- 4 per 1000 surface parking
- Built in 1997

Lease Rate: Starting at \$21.00 RSF/FS



TAMARA FULLER, CCIM
360 852 9624
tamara.fuller@colliers.com
Licensed WA & OR Real Estate Broker

MIKE THOMAS
503 499 0059
mike.thomas@colliers.com
Licensed OR Real Estate Broker

COLLIERS INTERNATIONAL
700 Washington Street, Suite 608
Vancouver, WA 98660
www.colliers.com

Building A



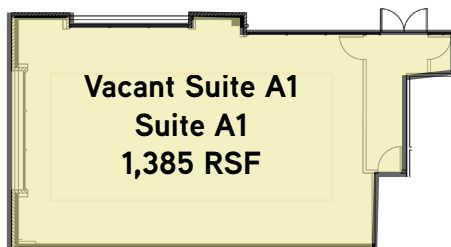
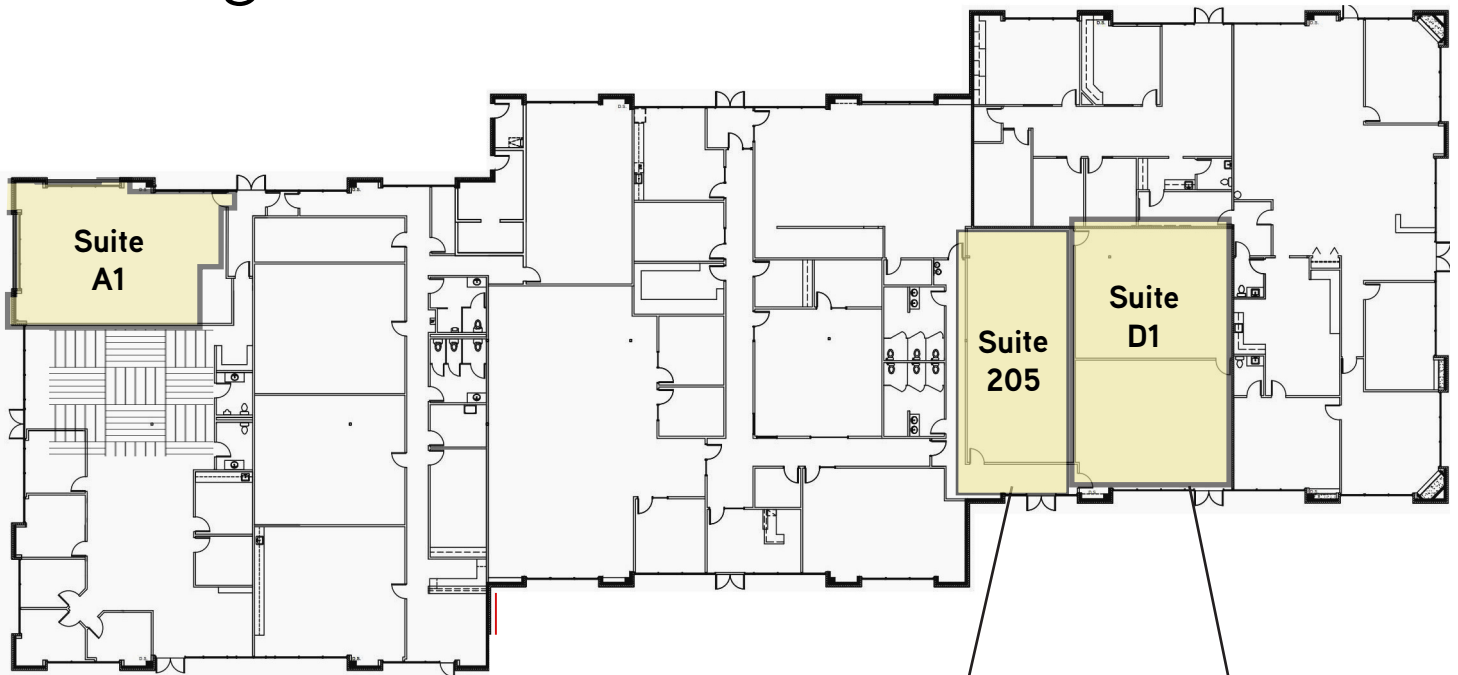
Total square footage available:

Approx 17,458 / RSF

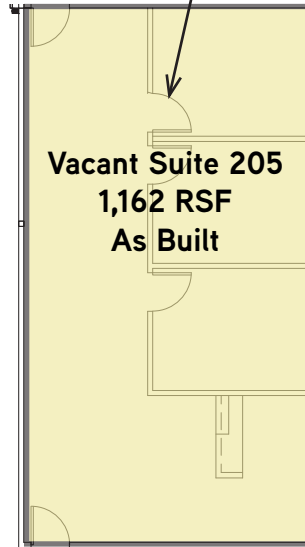


Building B

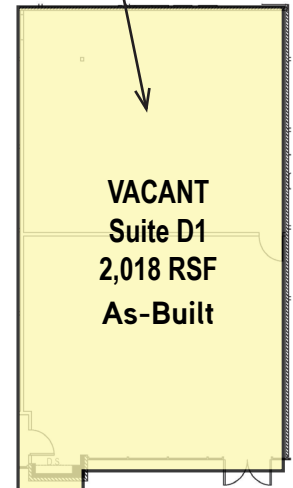
N



Suite A1 1,385 RSF



Suite 205 1,162 RSF



Suite D1 2,018 RSF

★ Suite 205 and D1 can be combined for a total of 3,180 RSF

FOR LEASE

Stonemill Center

120 NE 136TH AVENUE, VANCOUVER, WA 98684



This document has been prepared by Colliers International for advertising and general information only. Colliers International makes no guarantees, representations or warranties of any kind, expressed or implied, regarding the information including, but not limited to, warranties of content, accuracy and reliability. Any interested party should undertake their own inquiries as to the accuracy of the information. Colliers International excludes unequivocally all inferred or implied terms, conditions and warranties arising out of this document and excludes all liability for loss and damages arising there from. This publication is the copyrighted property of Colliers International and/or its licensor(s). ©2016. All rights reserved. 1/1/16

