

VIEW ONLINE



colliers.com/greaterphoenix

BELL RD.

59TH AVE.

101

83RD AVE.

75TH AVE.

67TH AVE.

GREENWAY RD.

GREENWAY RD.

SITE

# NEC 67th Ave & Greenway Rd Glendale, AZ

## ZONED HARD CORNER FOR SALE

- C-2 zoned hard corner - PAD
- Parcel Number 200-51-953B
- Land size  $\pm$ 39,204 SF
- Zoned C-2, City of Glendale
- 2017 Taxes \$7,518.12
- E-W traffic counts 14,200 VPD  
N-S traffic counts 22,900 VPD

## DEMOGRAPHICS

DESCRIPTION	1 MILE	3 MILES	5 MILES
2021 Population	14,148	132,695	378,800
2016 Population	13,146	123,851	355,064
2016 Average Household Income	\$71,750	\$79,950	\$70,895

PRICE:

**\$399,000** (\$10.17 PER SF)

Contact us:

**Mike Milic**

Vice President

+1 602 222 5050

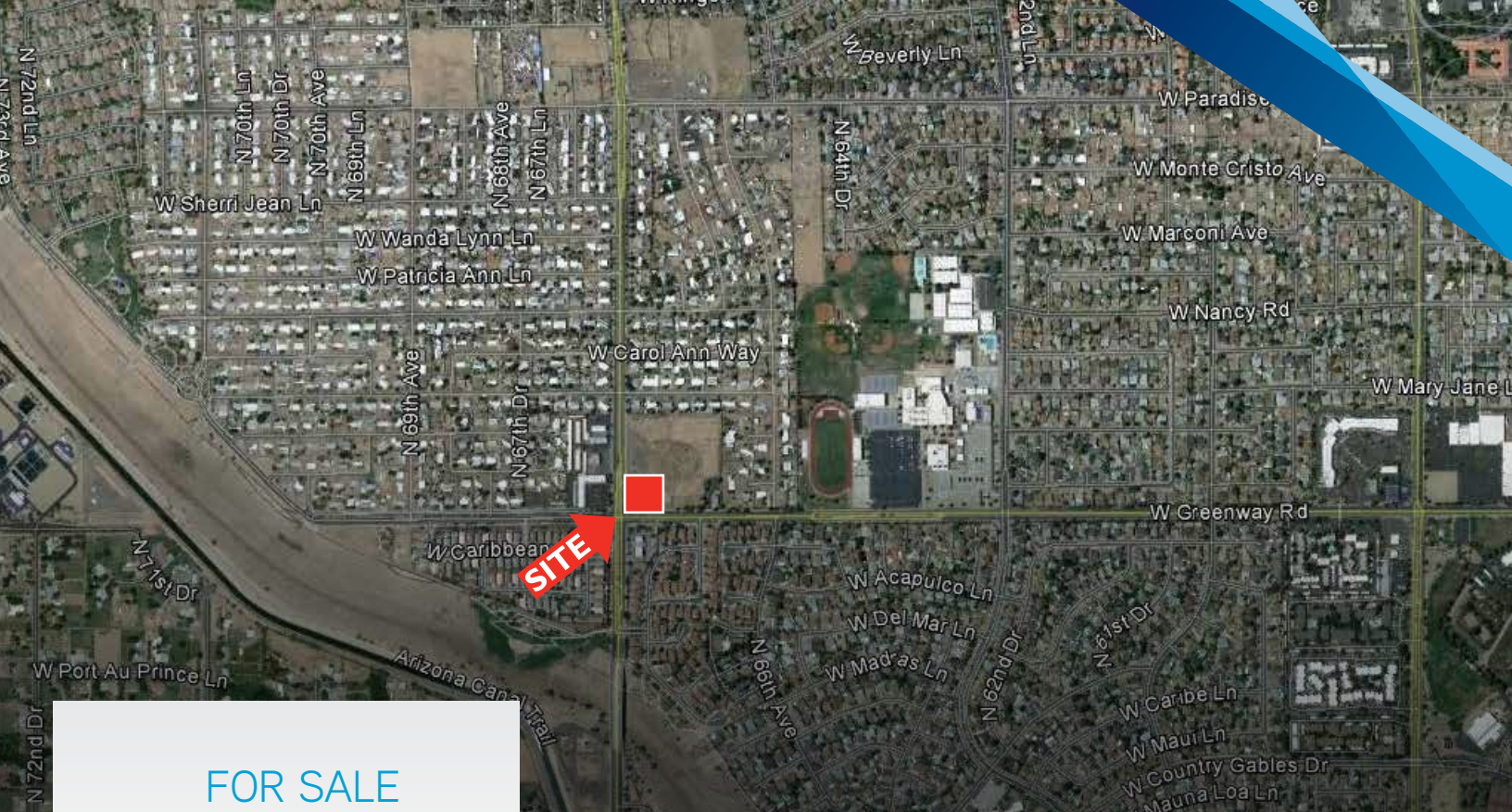
michael.milic@colliers.com



This document has been prepared by Colliers International for advertising and general information only. Colliers International makes no guarantees, representations or warranties of any kind, expressed or implied, regarding the information including, but not limited to, warranties of content, accuracy and reliability. Any interested party should undertake their own inquiries as to the accuracy of the information. Colliers International excludes unequivocally all inferred or implied terms, conditions and warranties arising out of this document and excludes all liability for loss and damages arising there from. This publication is the copyrighted property of Colliers International and/or its licensor(s). ©2018. All rights reserved.

Colliers International  
2390 E Camelback Rd | Suite 100  
Phoenix, AZ 85016  
P: +1 602 222 5000





FOR SALE  
C-2 ZONED  
HARD CORNER

NEC 67TH AVE & GREENWAY RD | GLENDALE, AZ



Accelerating success.

Contact us:

**Mike Milic**

Vice President

+1 602 222 5050

michael.milic@colliers.com

Colliers International

2390 E Camelback Rd | Suite 100

Phoenix, AZ 85016

P: +1 602 222 5000

[colliers.com/greaterphoenix](https://colliers.com/greaterphoenix)