

FOR LEASE > RETAIL SPACE

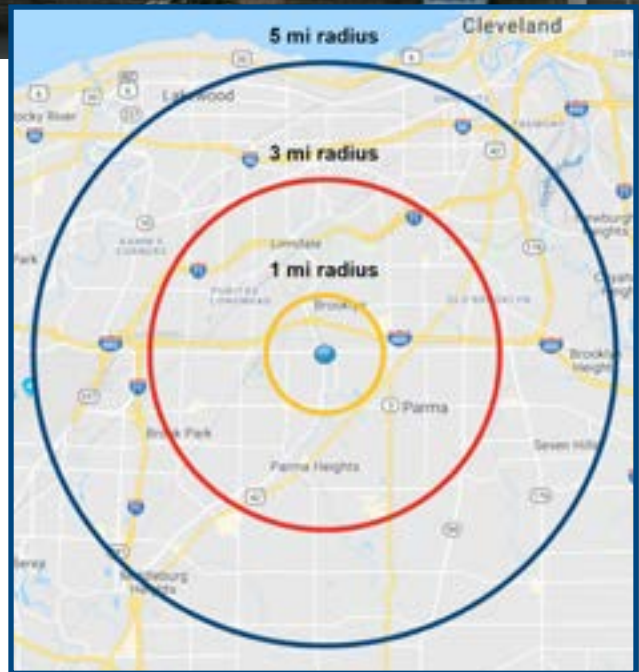
BIG CREEK PLAZA

10211 Brookpark Road, Parma, Ohio 44129



PROPERTY HIGHLIGHTS

- > 2,306 SF Available
- > \$12 - \$14 +NNN Per Square Foot
- > Local Merchants: Walmart, Sam's Club, Home Depot, Hungry Howie's and Boost Mobile
- > Less than one mile from I-480
- > Over 17,000 VPD on Brookpark & Tiedeman Roads
- > Ideal site for neighborhood retailer, carry-out food, bakery, professional office, travel agency, tax service, salon/spa



DEMOGRAPHICS	1 mile	3 mile	5 mile
Total Population	9,204	133,291	330,556
Total Daytime Employees	9,166	58,119	153,878
Average Household Income	\$57,655	\$59,084	\$61,575

MARK S. ABOOD, Esq.
 +1 216 239 5121
 mark.abood@colliers.com

PETER GREALIS
 +1 216 239 5118
 peter.grealis@colliers.com

COLLIERS INTERNATIONAL
 200 Public Square | Suite 1200
 Cleveland, OH 44114
 www.colliers.com/ohio

SITE AERIAL

Colliers
INTERNATIONAL

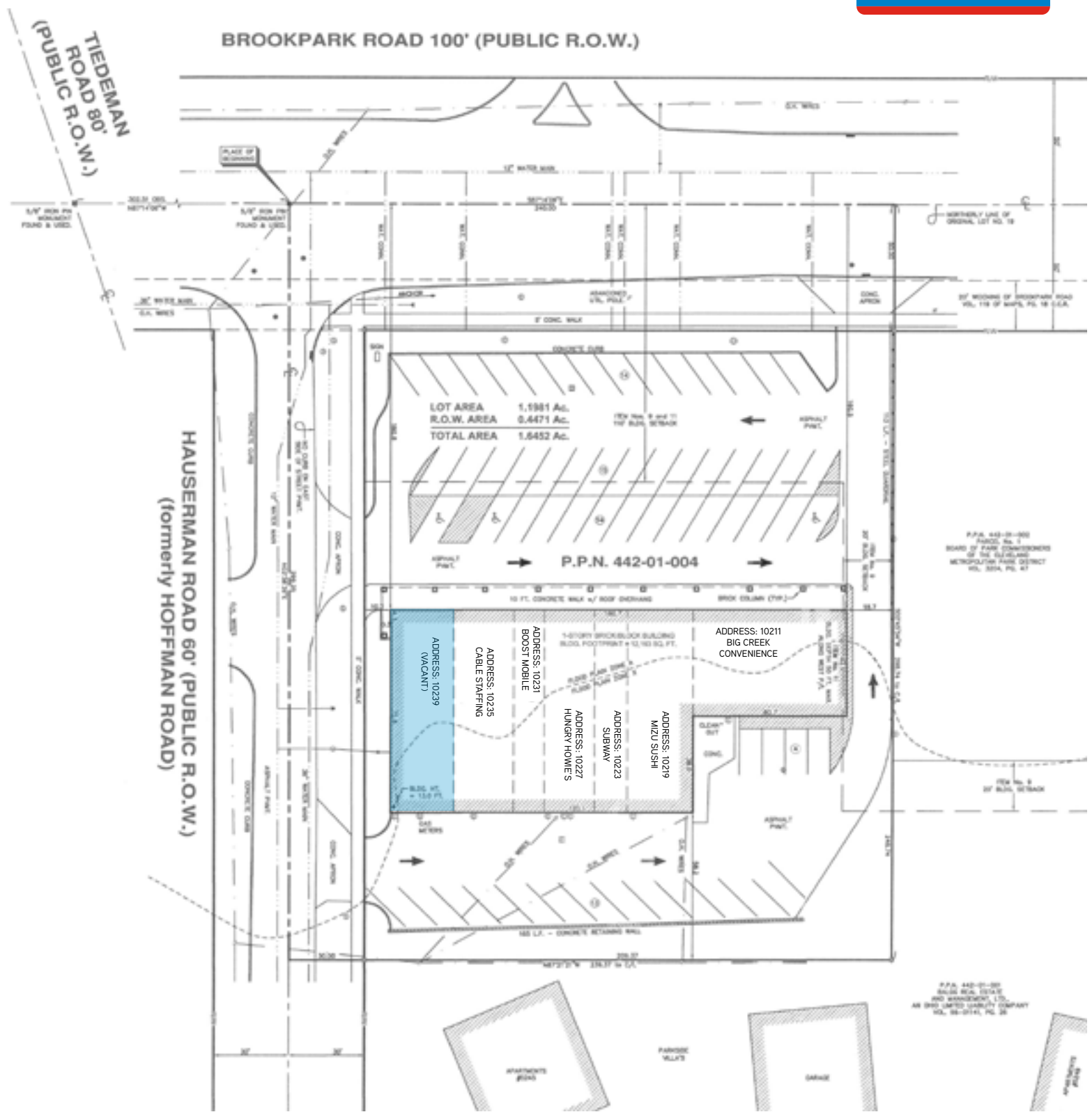


MARK S. ABOOD, ESQ.
+1 216 239 5121
mark.abood@colliers.com

PETER GREALIS
+1 216 239 5118
peter.grealis@colliers.com

COLLIERS INTERNATIONAL
200 Public Square | Suite 1200
Cleveland, OH 44114
www.colliers.com/ohio

SITE PLAN



MARK S. ABOOD, ESQ.
 +1 216 239 5121
 mark.abood@colliers.com

PETER GREALIS
 +1 216 239 5118
 peter.grealis@colliers.com

MARKET AERIAL

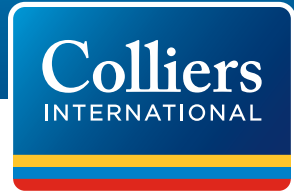


MARK S. ABOOD, ESQ.
 +1 216 239 5121
 mark.abood@colliers.com

PETER GREALIS
 +1 216 239 5118
 peter.grealis@colliers.com

COLLIERS INTERNATIONAL
 200 Public Square | Suite 1200
 Cleveland, OH 44114
 www.colliers.com/ohio

DEMOGRAPHIC REPORT



10211 Brookpark Rd		1 mi radius	3 mi radius	5 mi radius
Parma, OH 44130				
POPULATION	2018 Estimated Population	9,204	133,291	330,556
	2023 Projected Population	8,721	125,667	318,052
	2010 Census Population	9,473	138,675	344,359
	2000 Census Population	10,203	146,340	372,079
	Projected Annual Growth 2018 to 2023	-1.0%	-1.1%	-0.8%
	Historical Annual Growth 2000 to 2018	-0.5%	-0.5%	-0.6%
	2018 Median Age	40.5	38.6	38.4
HOUSEHOLDS	2018 Estimated Households	4,364	59,343	145,896
	2023 Projected Households	4,213	57,027	142,711
	2010 Census Households	4,318	59,413	146,357
	2000 Census Households	4,554	62,111	154,289
	Projected Annual Growth 2018 to 2023	-0.7%	-0.8%	-0.4%
	Historical Annual Growth 2000 to 2018	-0.2%	-0.2%	-0.3%
RACE AND ETHNICITY	2018 Estimated White	82.4%	80.2%	76.6%
	2018 Estimated Black or African American	8.1%	9.2%	11.3%
	2018 Estimated Asian or Pacific Islander	4.2%	2.9%	2.6%
	2018 Estimated American Indian or Native Alaskan	0.2%	0.3%	0.4%
	2018 Estimated Other Races	5.1%	7.4%	9.1%
	2018 Estimated Hispanic	8.0%	11.4%	13.8%
INCOME	2018 Estimated Average Household Income	\$57,655	\$59,084	\$61,575
	2018 Estimated Median Household Income	\$46,200	\$46,619	\$46,521
	2018 Estimated Per Capita Income	\$27,341	\$26,352	\$27,278
EDUCATION (AGE 25+)	2018 Estimated Elementary (Grade Level 0 to 8)	2.5%	3.7%	4.1%
	2018 Estimated Some High School (Grade Level 9 to 11)	12.1%	9.7%	9.8%
	2018 Estimated High School Graduate	34.2%	36.8%	33.9%
	2018 Estimated Some College	24.1%	24.0%	22.6%
	2018 Estimated Associates Degree Only	6.6%	8.2%	8.1%
	2018 Estimated Bachelors Degree Only	14.6%	12.1%	14.4%
	2018 Estimated Graduate Degree	5.8%	5.4%	7.1%
BUSINESS	2018 Estimated Total Businesses	467	4,185	10,873
	2018 Estimated Total Employees	9,166	58,119	153,878
	2018 Estimated Employee Population per Business	19.6	13.9	14.2
	2018 Estimated Residential Population per Business	19.7	31.9	30.4