

FOR LEASE > OFFICE SPACE



Crossroads Buildings

KANSAS CITY, MISSOURI

ELECTRIC BUILDING

300 Southwest Boulevard
Kansas City, Missouri

- > \$18.00 PSF, full service
- > Loft style
- > First floor with private entrance
- > Heart of the Crossroads
- > Anchor tenant: Sullivan Higdon & Sink
- > 4,878 SF available
- > Professionally managed
- > Open floor plan



ZAHNER BUILDING

310 W 20th Street
Kansas City, Missouri

- > \$18.00 PSF, full service
- > Loft style
- > Private entrance
- > Up to 11,500 SF available
- > Professionally managed
- > Open floor plan
- > First floor space

EVAN WARWICK
+1 816 556 1137
KANSAS CITY, MO
evan.warwick@colliers.com

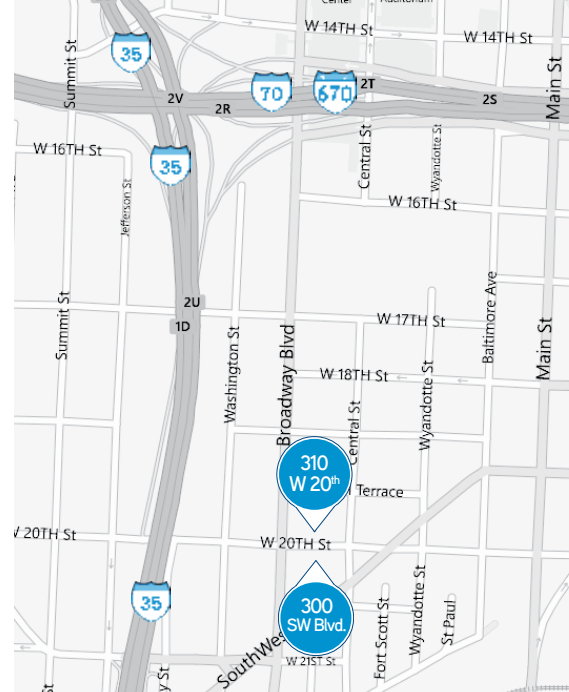
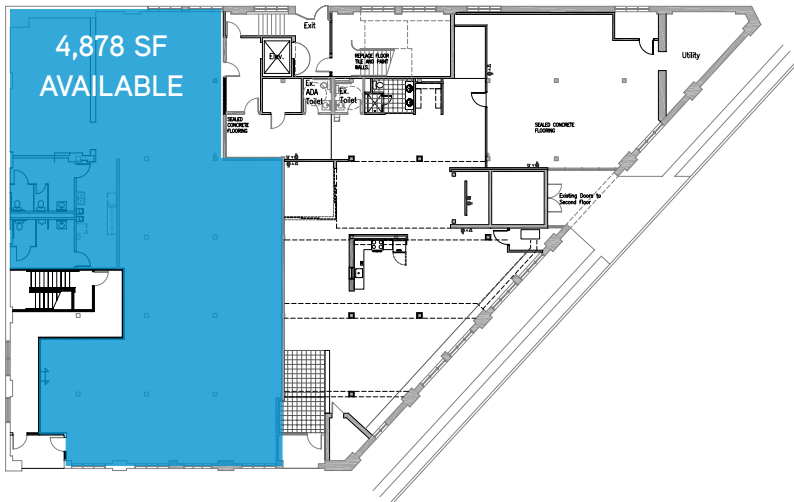
PAT COPPINGER
+1 816 556 1110
KANSAS CITY, MO
pat.coppinger@colliers.com

COLLIERS INTERNATIONAL
4520 Main Street, Suite 1000
Kansas City, MO 64111
www.colliers.com

FOR LEASE > OFFICE SPACE

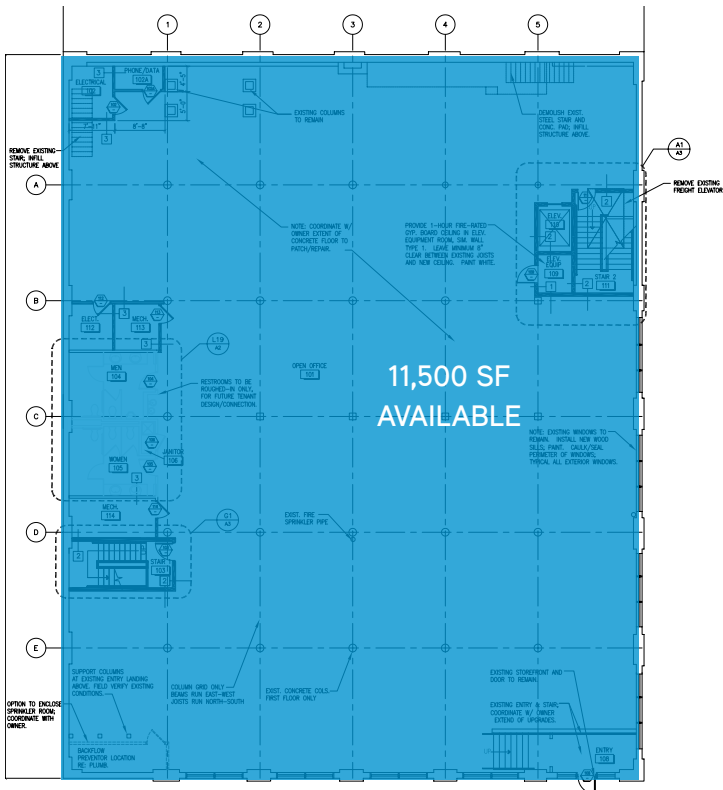
Crossroads Buildings

ELECTRIC BUILDING | 300 Southwest Boulevard



Please contact
us to see this
property

ZAHNER BUILDING | 310 W 20th Street



EVAN WARWICK

+1 816 556 1137

KANSAS CITY, MO

evan.warwick@colliers.com

PAT COPPINGER

+1 816 556 1110

KANSAS CITY, MO

pat.coppinger@colliers.com

COLLIERS INTERNATIONAL
4520 Main Street, Suite 1000
Kansas City, MO 64111

www.colliers.com

This document has been prepared by Colliers International for advertising and general information only. Colliers International makes no guarantees, representations or warranties of any kind, expressed or implied, regarding the information including, but not limited to, warranties of content, accuracy and reliability. Any interested party should undertake their own inquiries as to the accuracy of the information. Colliers International excludes unequivocally all inferred or implied terms, conditions and warranties arising out of this document and excludes all liability for loss and damages arising there from. This publication is the copyrighted property of Colliers International and/or its licensor(s). ©2016. All rights reserved.

