



FOR LEASE

Lease Rate:

# \$21.00

PSF, full service

Contact us:

**Brandon Rogers**

+1 501 850 0722

brandon.rogers@ar.colliers.com

**Justin Bentley, CCIM, SIOR**

+1 501 850 0739

justin.bentley@ar.colliers.com

## Riverdale Office Space with Private Balcony & River Views

For Lease: 2300 Cottdale Lane,  
Little Rock, AR

### Suite 100

- +/- 3,394 RSF – \$21.00 PSF full service
- Tenant finish – negotiable
- Large open collaboration area and offices
- Beautiful views of the Arkansas River
- Large private deck
- Quick access to restaurants, downtown, and midtown
- Traffic counts: approx. 7,500 vehicles per day along Arkansas River Trail and 20,000 vehicles per day along Cantrell Road

Copyright © 2025 Colliers International. Information herein has been obtained from sources deemed reliable, however its accuracy cannot be guaranteed. The user is required to conduct their own due diligence and verification.

**Colliers | Arkansas**

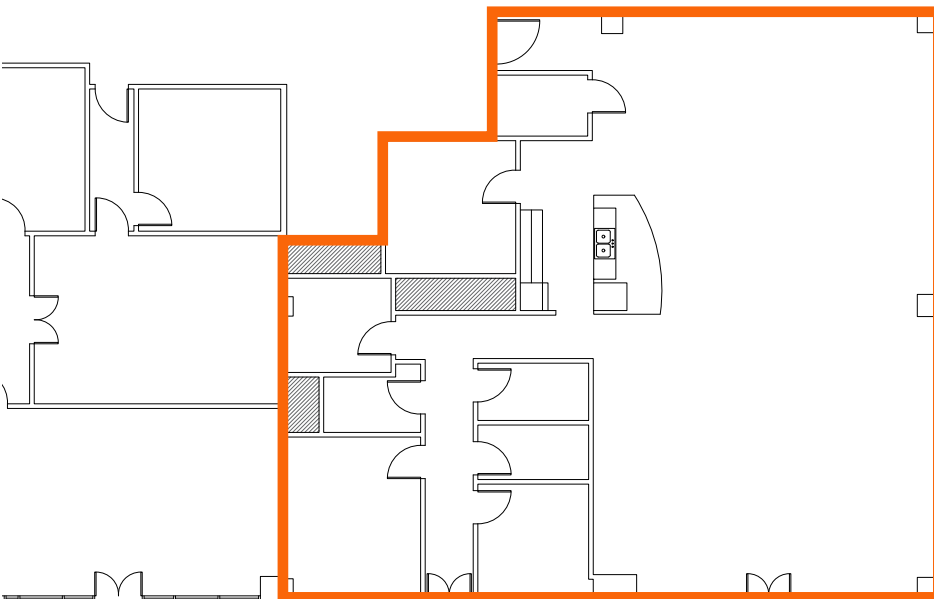
1 Allied Drive, Suite 1500

Little Rock, AR 72202

P: +1 501 372 6161

F: +1 501 372 0671

# Neighborhood Map



## Contact us:

**Brandon Rogers**

+1 501 850 0722

[brandon.rogers@ar.colliers.com](mailto:brandon.rogers@ar.colliers.com)

**Justin Bentley, CCIM, SIOR**

+1 501 850 0739

[justin.bentley@ar.colliers.com](mailto:justin.bentley@ar.colliers.com)

1 Allied Drive, Suite 1500

Little Rock, AR 72202

P: +1 501 372 6161

[colliers.com/arkansas](http://colliers.com/arkansas)