

FOR LEASE > OFFICE SPACE

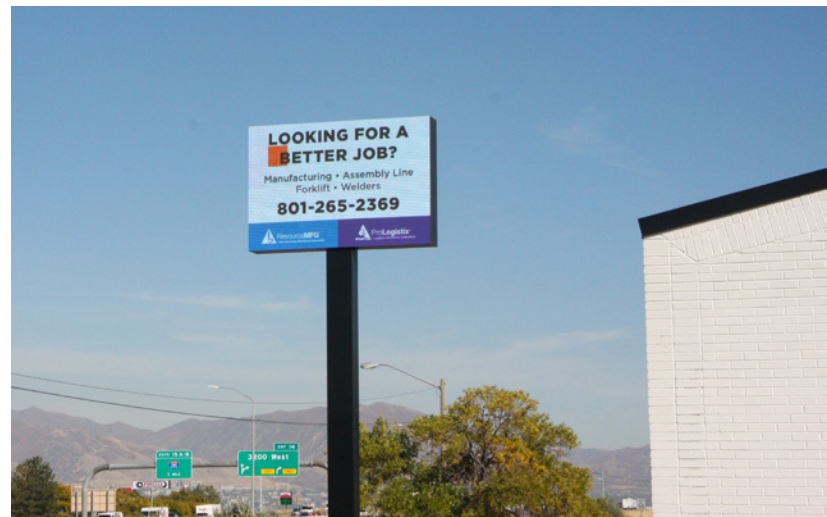
2115 S. 3600 W.

WEST VALLEY CITY, UTAH 84119



Property Information

- > Available space:
 - Suite 2119: 1,340 SF of Office Space
 - Suite 2120: 1,100 SF of Warehouse
 - Suite 2121: 3,130 SF of Office Space
 - Suite 2122: 4,470 SF of Office Space
- > Rate: 13.50 PSF, NNN
- > Ample parking
- > Great space with an open floorplan
- > LED pylon signage available
- > Easy freeway access
- > Great exposure form 201



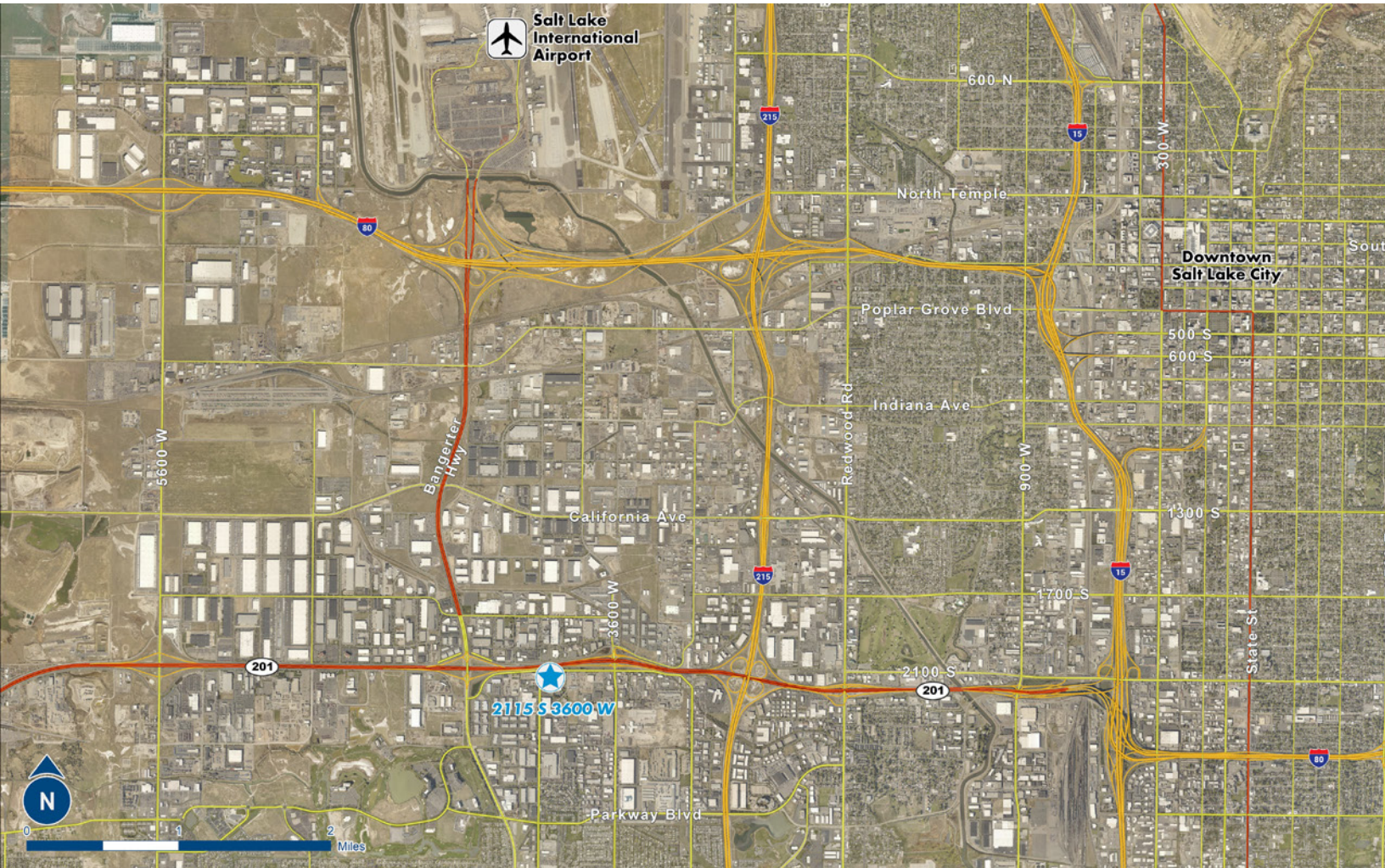
Tanner Riedel
+1 801 947 8363
tanner.riedel@colliers.com

Colliers International
111 Main Street | Suite 2200
Salt Lake City, UT 84111
P: +1 801 947 8300

FOR LEASE > OFFICE SPACE

2115 S. 3600 W.

WEST VALLEY CITY, UTAH 84119



This document has been prepared by Colliers International for advertising and general information only. Colliers International makes no guarantees, representations or warranties of any kind, expressed or implied, regarding the information including, but not limited to, warranties of content, accuracy and reliability. Any interested party should undertake their own inquiries as to the accuracy of the information. Colliers International excludes unequivocally all inferred or implied terms, conditions and warranties arising out of this document and excludes all liability for loss and damages arising therefrom. This publication is the copyrighted property of Colliers International and/or its licensor(s). ©2019. All rights reserved.

Colliers International
111 Main Street | Suite 2200
Salt Lake City, UT 84111
P: +1 801 947 8300



Accelerating success.