

# Fair Plaza Shopping Center

6001 LOMAS BLVD NE, ALBUQUERQUE, NM 87110

Accelerating success.



## Details

- > Lease Rate: \$12.50 / SF NNN
- > NNN: \$2.45 / SF
- > Available Space:
  - Jr Anchor: +/- 22,324 SF
  - Suite H: +/- 1,400 SF
  - Suite O: +/- 1,600 SF
- > Zoning: MX-M

## Property Features

- > Grocery anchored neighborhood center in extremely dense residential area
- > Jr. Anchor space has existing drive thru window
- > Located one mile south of Uptown, New Mexico's premeir retail and dining district
- > Traffic count: Lomas Blvd: 25,700 VPD & San Pedro: 18,270 VPD

## Area Tenants



## Contact Us

BEN PERICH  
SENIOR ASSOCIATE  
+1 505 880 7054  
ALBUQUERQUE, NM  
LICENSE #45966  
[ben.perich@colliers.com](mailto:ben.perich@colliers.com)

BRANDON SAYLOR, CCIM  
ASSOCIATE BROKER  
+1 505 350 0296  
ALBUQUERQUE, NM  
LICENSE #46223  
[brandon.saylor@colliers.com](mailto:brandon.saylor@colliers.com)

COLLIERS INTERNATIONAL | NM  
MAIN +1 505 883 7676  
5051 Journal Center Blvd. NE, Suite 200  
Albuquerque, NM 87109  
[www.colliers.com](http://www.colliers.com)



# Property Photos

4000 SAN MATEO BLVD NE, ALBUQUERQUE, NM 87110



BEN PERICH  
SENIOR ASSOCIATE  
+1 505 880 7054  
ALBUQUERQUE, NM  
LICENSE #45966  
[ben.perich@colliers.com](mailto:ben.perich@colliers.com)

BRANDON SAYLOR, CCIM  
ASSOCIATE BROKER  
+1 505 350 0296  
ALBUQUERQUE, NM  
LICENSE #46223  
[brandon.saylor@colliers.com](mailto:brandon.saylor@colliers.com)

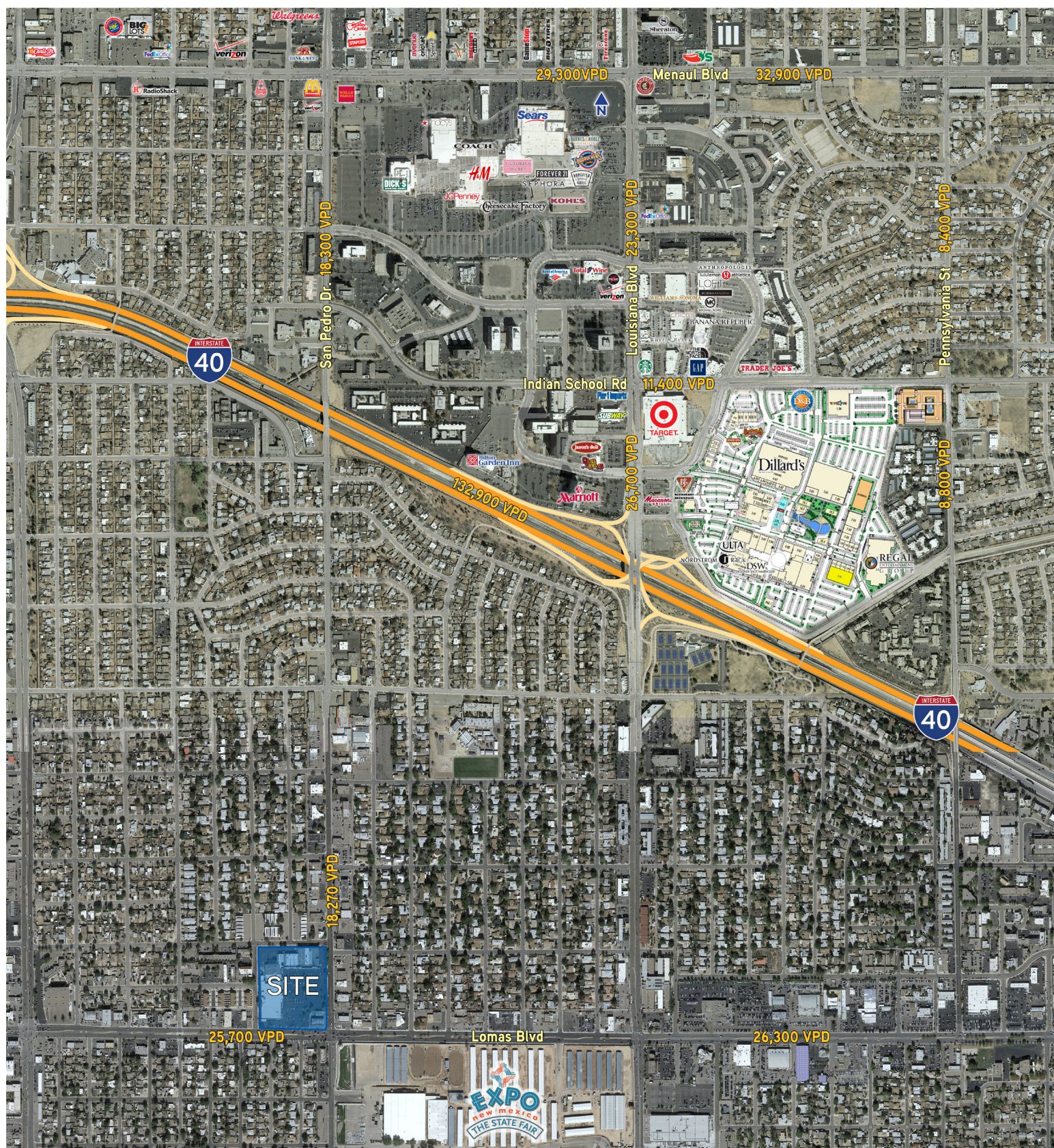
COLLIERS INTERNATIONAL | NM | MAIN +1 505 883 7676 | 5051 Journal Center Blvd. NE, Ste. 200 | Albuquerque, NM 87109 | [www.colliers.com](http://www.colliers.com)

*Independently Owned and Operated* – The information contained herein was obtained from sources believed reliable; however, Colliers International makes no guarantees, warranties or representations as to the completeness or accuracy thereof. The presentation of this property is submitted subject to errors, omissions, change of price or conditions prior to sale or lease, or withdrawal without notice.



# Trade Area Aerial

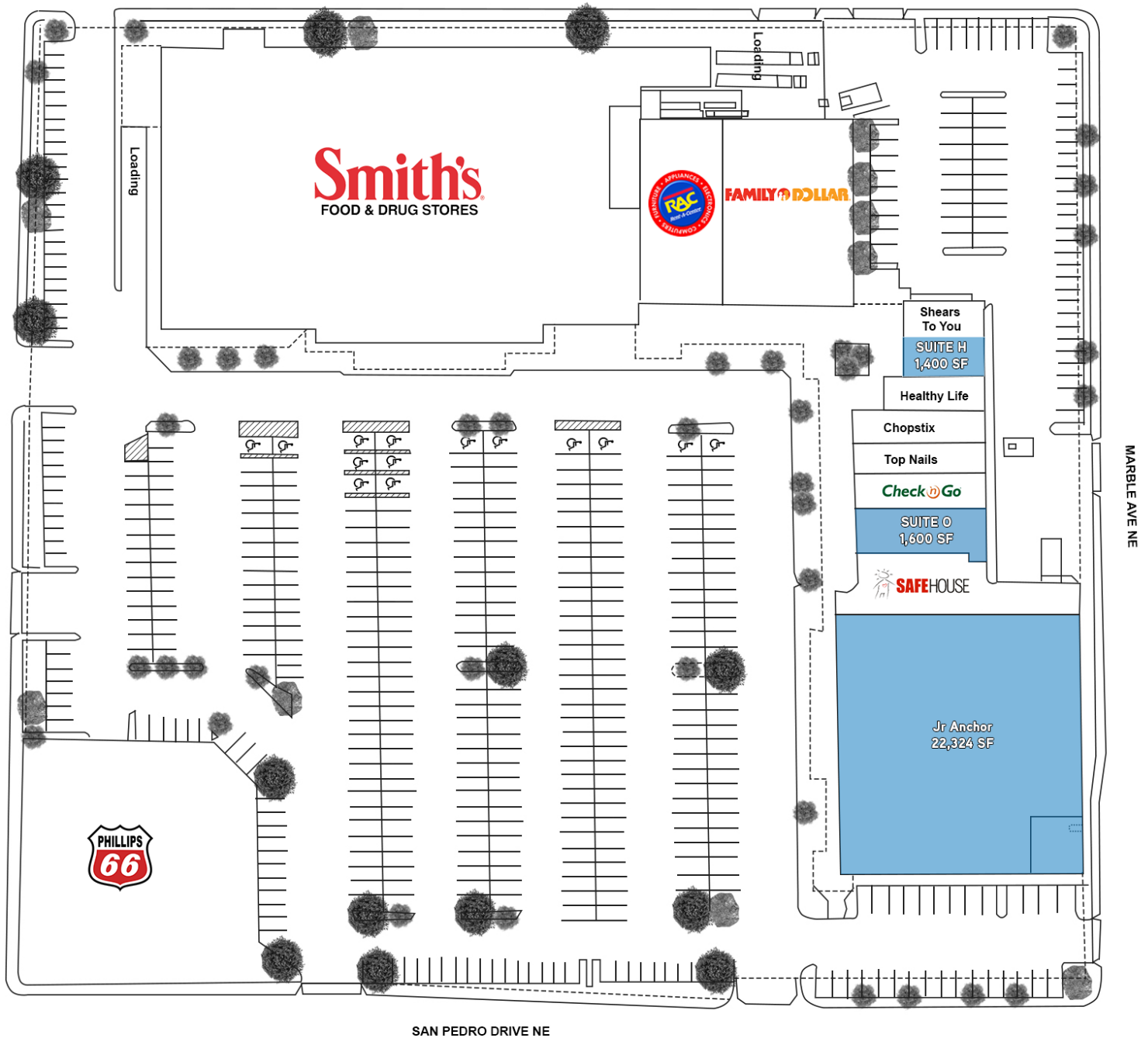
4000 SAN MATEO BLVD NE, ALBUQUERQUE, NM 87110





# Site Plan

4000 SAN MATEO BLVD NE, ALBUQUERQUE, NM 87110



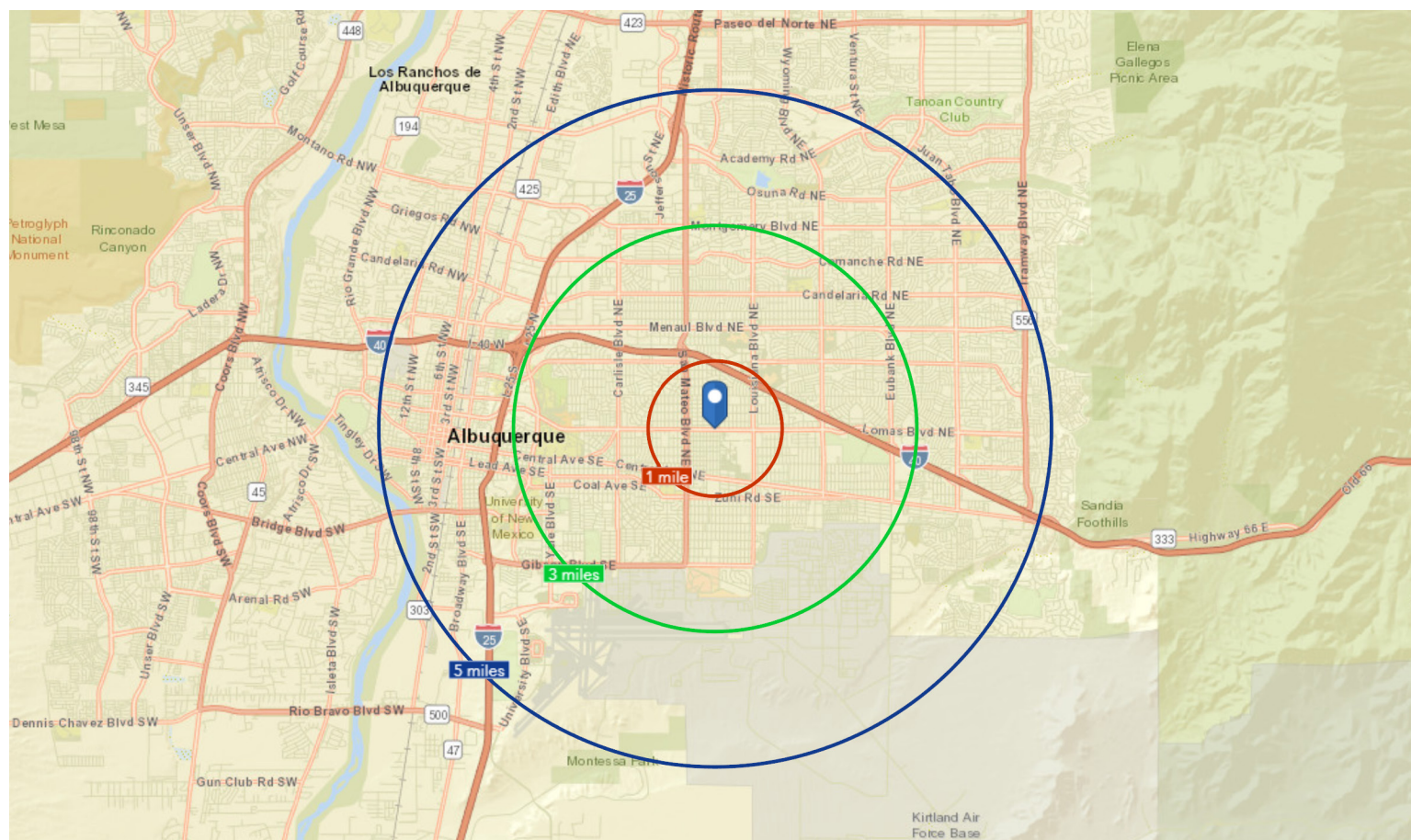
BEN PERICH  
 SENIOR ASSOCIATE  
 +1 505 880 7054  
 ALBUQUERQUE, NM  
 LICENSE #45966  
[ben.perich@colliers.com](mailto:ben.perich@colliers.com)

BRANDON SAYLOR, CCIM  
 ASSOCIATE BROKER  
 +1 505 350 0296  
 ALBUQUERQUE, NM  
 LICENSE #46223  
[brandon.saylor@colliers.com](mailto:brandon.saylor@colliers.com)

# Demographics

4000 SAN MATEO BLVD NE, ALBUQUERQUE, NM 87110

Accelerating success.



## Demographics

	1-Mile	3-Mile	5-Mile
Total Population	14,738	131,205	285,000
Total Households	7,279	57,461	124,822
Average HH Income	\$52,522	\$57,126	\$58,600
Median HH Income	\$35,851	\$39,261	\$41,596

## Contact Us

\* Demographic data derived from 2010 US Census

BEN PERICH  
SENIOR ASSOCIATE  
+1 505 880 7054  
ALBUQUERQUE, NM  
LICENSE #45966  
[ben.perich@colliers.com](mailto:ben.perich@colliers.com)

BRANDON SAYLOR, CCIM  
ASSOCIATE BROKER  
+1 505 350 0296  
ALBUQUERQUE, NM  
LICENSE #46223  
[brandon.saylor@colliers.com](mailto:brandon.saylor@colliers.com)

COLLIERS INTERNATIONAL | NM | MAIN +1 505 883 7676 | 5051 Journal Center Blvd. NE, Ste. 200 | Albuquerque, NM 87109 | [www.colliers.com](http://www.colliers.com)