

Roxbury Industrial Park

Roxbury Road

INVESTMENT SALE

2401 Roxbury Road

CHARLES CITY, VA 23030

COLLIERS INTERNATIONAL
7200 Glen Forest Drive | Suite 200
Richmond, VA 23226
www.colliers.com/richmond

Colliers
INTERNATIONAL

INVESTMENT SALE > 2401 Roxbury Road | Charles City, VA 23030

ESTABLISHED	54,500 SF Truss manufacturing operation with long-term operating history
LEASE	New Five (5) year, NNN lease
ACREAGE	12.22± acres majority cleared and graveled
	1,000' Frontage on Roxbury Road
	Excellent access to Richmond/Hampton Roads construction markets less than 5 miles off I-64
	Across from the Roxbury Industrial Park
	Tenant recently made significant upgrades MFG equipment
PRICE	\$1,800,000

CONTACTS

Andrew Ferguson
Senior Vice President
+1 804 591 2427
andrew.ferguson@colliers.com

Jason Hetherington Sior
Senior Vice President
+1 804 591 2407
jason.hetherinton@colliers.com



COLLIERS INTERNATIONAL
7200 Glen Forest Drive | Suite 200
Richmond, VA 23226
www.colliers.com



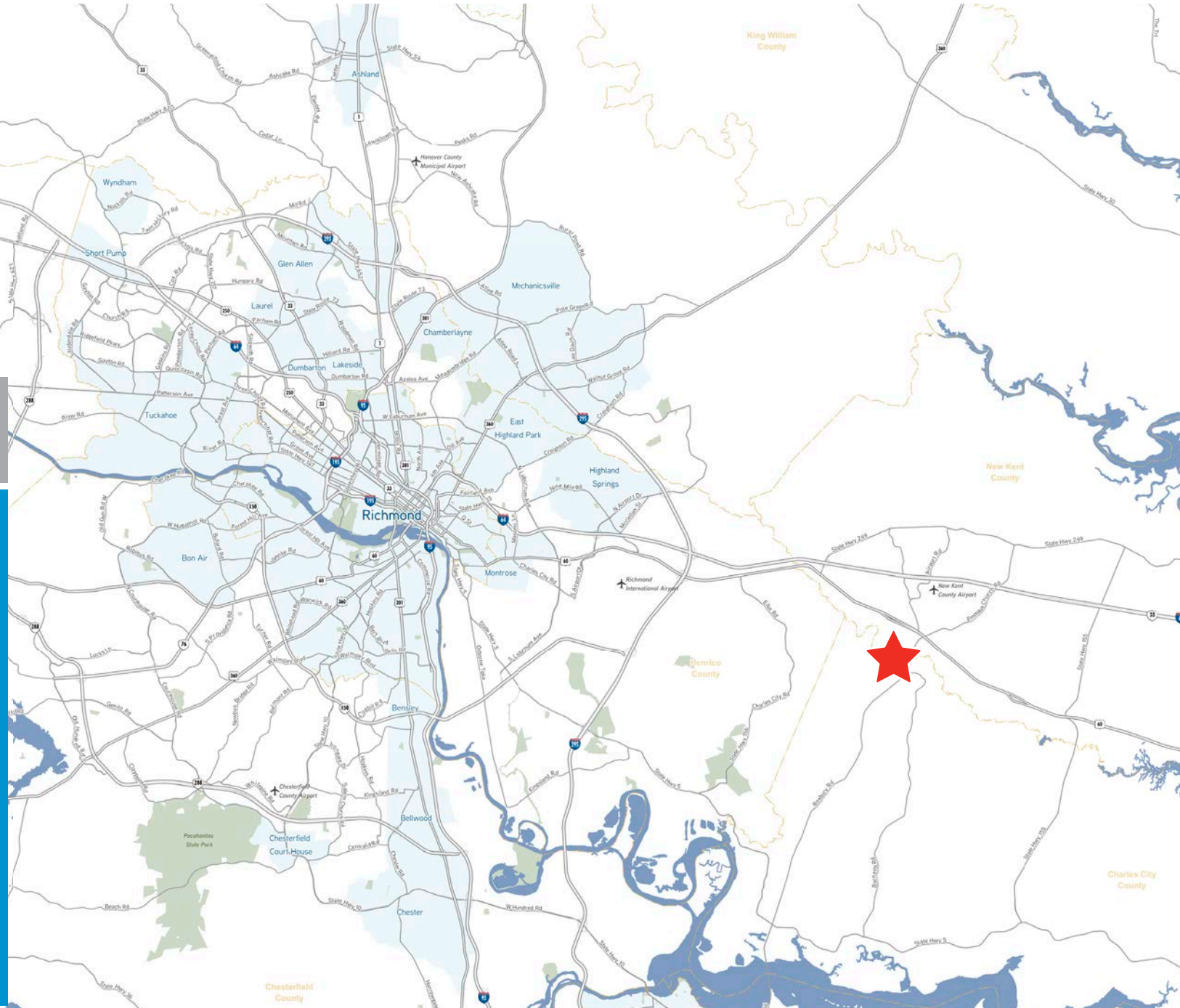
CONTACTS

Andrew Ferguson
Senior Vice President
+1 804 591 2427
andrew.ferguson@colliers.com

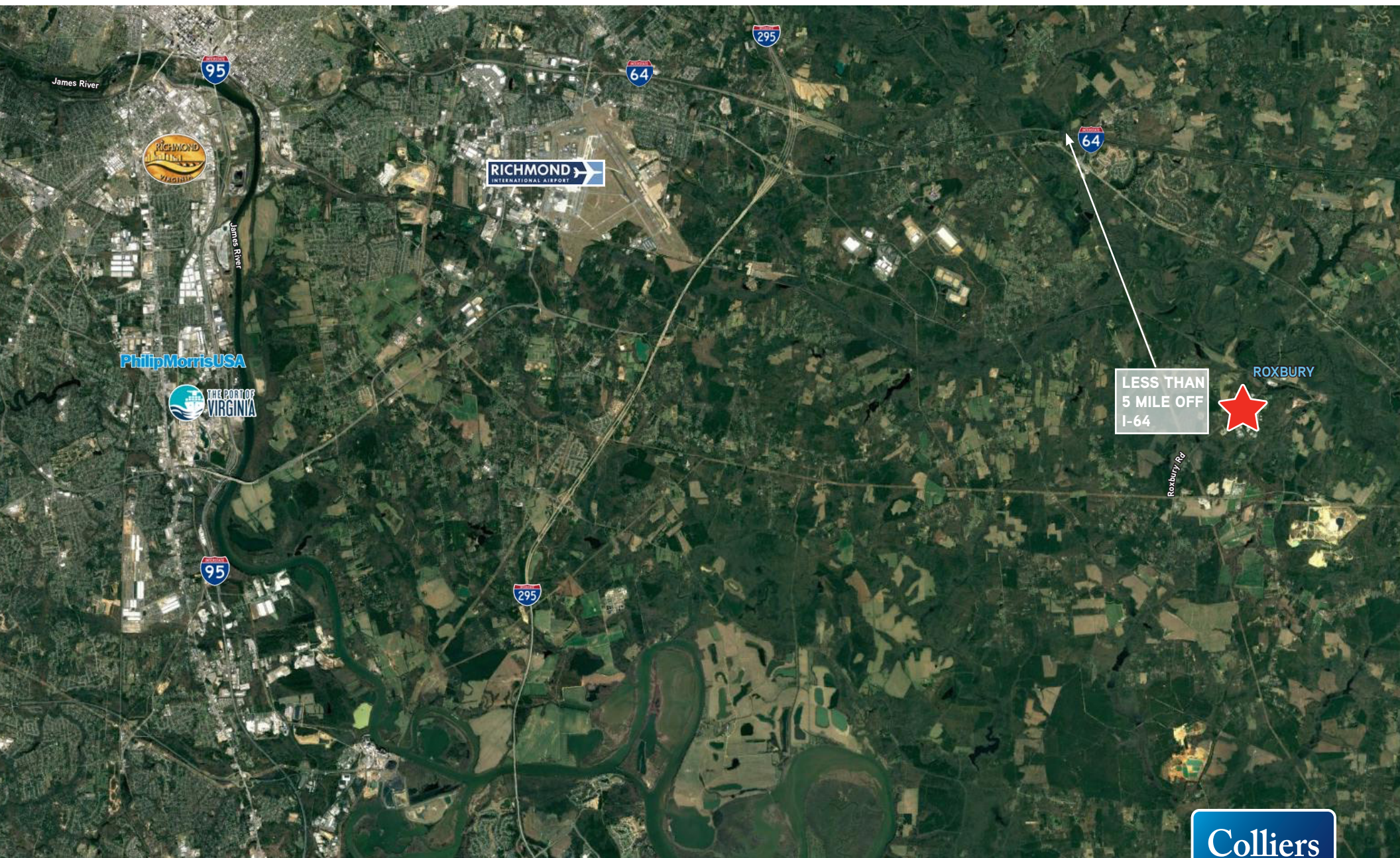
Jason Hetherington SIOR
Senior Vice President
+1 804 591 2407
jason.hetherinton@colliers.com



COLLIERS INTERNATIONAL
7200 Glen Forest Drive
Suite 200
Richmond, VA 23226
www.colliers.com



INVESTMENT SALE > 2401 Roxbury Road | Charles City, VA 23030



The information contained herein was obtained from sources, believed reliable, however, Colliers International make no guarantees, warranties or representations as to the completeness or accuracy thereof. The presentation of this property is submitted subject to errors, omissions, change of price or conditions prior to sale or lease, or withdrawal without notice. File name: RoxburyRd_2401_SALE rev 3-19-18

