

FOR LEASE Tiburon, CA 1,800± SF Retail Space



1599 TIBURON BOULEVARD, TIBURON, CA



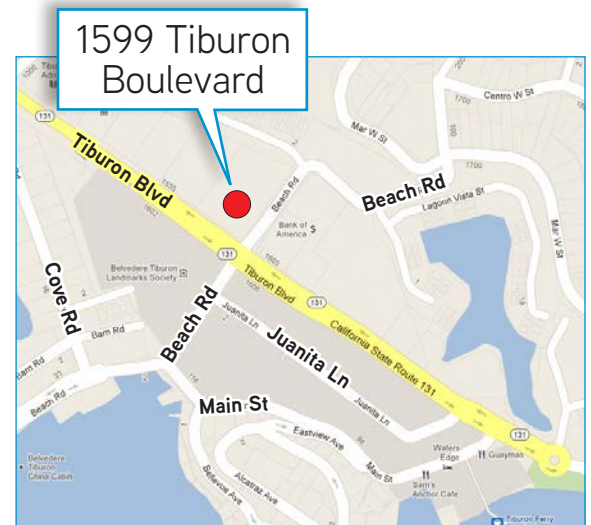
1,800± SF End Cap Space with Potential Outside Seating

Highlights

- › Downtown Tiburon, located across from Woodlands Market
- › High traffic location
- › Excellent visibility
- › 4/1000 parking plus adjacent paid lot parking
- › New vanilla shell build-out

Demographics (2016)

	1 Mile	3 Mile	5 Mile
Daytime Population	2,562	12,979	32,548
Population	6,200	24,745	59,560
Households	2,901	12,063	25,278
Average HH Income	\$215,406	\$174,046	\$172,583



Information contained herein has been obtained from the owners or from other sources we deem reliable. We have no reason to doubt its accuracy but regret we cannot guarantee it. All properties are subject to change or withdrawal without notice.

RENÉ BROCHIER
+1 925 227 6242
rene.brochier@colliers.com
CA License No. 00663110

COLLIERS INTERNATIONAL
3825 Hopyard Road, Suite 195
Pleasanton, CA 94588
www.colliers.com

FOR LEASE
Tiburon, CA
1,800± SF Retail Space



1599 TIBURON BOULEVARD, TIBURON, CA



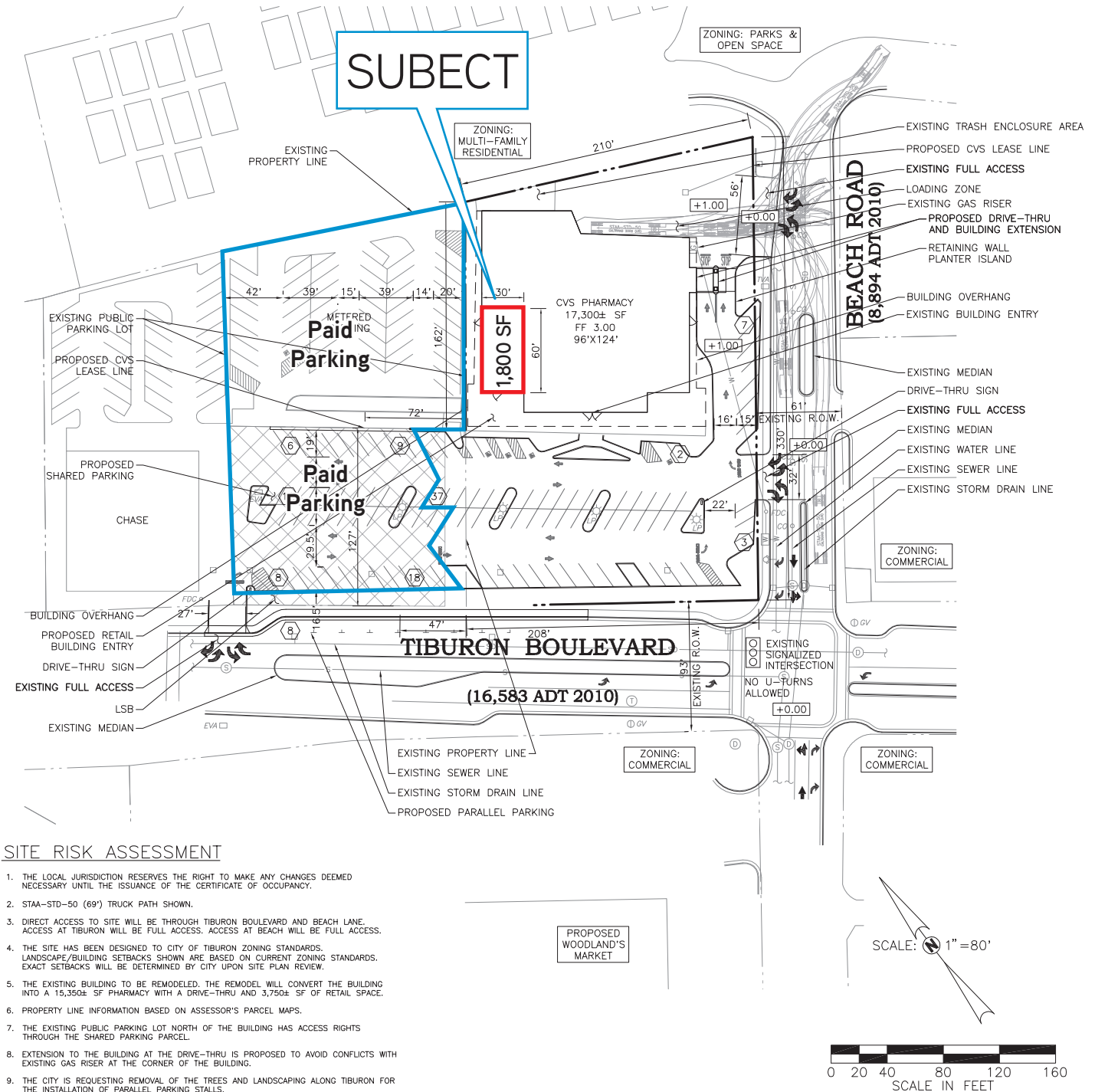
RENÉ BROCHIER
+1 925 227 6242
rene.brochier@colliers.com
CA License No. 00663110

COLLIERS INTERNATIONAL
3825 Hopyard Road, Suite 195
Pleasanton, CA 94588
www.colliers.com

FOR LEASE Tiburon, CA 1,800± SF Retail Space



1599 TIBURON BOULEVARD, TIBURON, CA



RENÉ BROCHIER
+1 925 227 6242
rene.brochier@colliers.com
CA License No. 00663110

COLLIERS INTERNATIONAL
3825 Hopyard Road, Suite 195
Pleasanton, CA 94588
www.colliers.com

FOR LEASE
Tiburon, CA
1,800± SF Retail Space



1599 TIBURON BOULEVARD, TIBURON, CA



RENÉ BROCHIER
+1 925 227 6242
rene.brochier@colliers.com
CA License No. 00663110

COLLIERS INTERNATIONAL
3825 Hopyard Road, Suite 195
Pleasanton, CA 94588
www.colliers.com

FOR LEASE
Tiburon, CA
1,800± SF Retail Space



1599 TIBURON BOULEVARD, TIBURON, CA



RENÉ BROCHIER
+1 925 227 6242
rene.brochier@colliers.com
CA License No. 00663110

COLLIERS INTERNATIONAL
3825 Hopyard Road, Suite 195
Pleasanton, CA 94588
www.colliers.com

FOR LEASE Tiburon, CA 1,800± SF Retail Space



1599 TIBURON BOULEVARD, TIBURON, CA

Demographic Detail

	1-Miles	3-Miles	5-Miles
Population			
2016 Daytime Business	2,562	12,979	32,548
2021 Projection	6,511	26,020	61,684
2016 Estimate	6,200	24,745	59,560
2010 Census	5,860	23,359	57,779
2000 Census	5,887	22,617	58,394
Projected Growth 2016 - 2021	5.01%	5.15%	3.57%
Estimated Growth 2010 - 2016	5.81%	5.93%	3.08%
Growth 2000 - 2010	-0.46%	3.28%	-1.05%
Housholds			
2021 Projection	3,076	12,723	26,417
2016 Estimate	2,901	12,063	25,278
2010 Census	2,691	11,314	24,061
2000 Census	2,732	11,128	24,181
Projected Growth 2016 - 2021	6.02%	5.48%	4.51%
Estimated Growth 2010 - 2016	7.81%	6.62%	5.06%
Growth 2000 - 2010	-1.49%	1.67%	-0.50%
2016 Est. Population by Single-Classification Race			
White Alone	87.82%	84.34%	80.64%
Black or African American Alone	0.94%	3.56%	5.17%
Amer. Indian and Alaska Native Alone	0.20%	0.21%	0.39%
Asian Alone	5.42%	6.68%	6.62%
Native Hawaiian and Other Pac. Isl. Alone	0.18%	0.19%	0.23%
Some Other Race Alone	1.29%	1.14%	2.77%
Two or More Races	4.15%	3.88%	4.17%
Not Hispanic or Latino	96.14%	95.02%	93.19%
Hispanic or Latino	3.86%	4.98%	6.81%
2016 Est. Households by HH Income			
2016 Est. Average Household Income	\$215,406	\$174,046	\$172,583
2016 Est. Median Household Income	\$152,392	\$123,510	\$119,498
2016 Est. Population by Age			
0 to 4 Years	4.03%	8.82%	9.29%
5 to 9 Years	4.51%	10.57%	10.97%
10 to 14 Years	6.40%	10.86%	11.98%
15 to 17 Years	3.76%	5.95%	6.55%
18 to 20 Years	3.10%	5.05%	5.82%
21 to 24 Years	3.18%	5.48%	7.14%
25 to 34 Years	3.91%	11.83%	15.30%
35 to 44 Years	7.80%	23.56%	25.33%
45 to 54 Years	14.10%	30.89%	33.96%
55 to 64 Years	17.69%	36.37%	32.88%
65 to 74 Years	18.42%	31.85%	25.16%
75 to 84 Years	9.02%	6.76%	5.27%
2016 Est. Median Age	54.4	101.6	47.2

RENÉ BROCHIER
+1 925 227 6242
rene.brochier@colliers.com
CA License No. 00663110

COLLIERS INTERNATIONAL
3825 Hopyard Road, Suite 195
Pleasanton, CA 94588
www.colliers.com