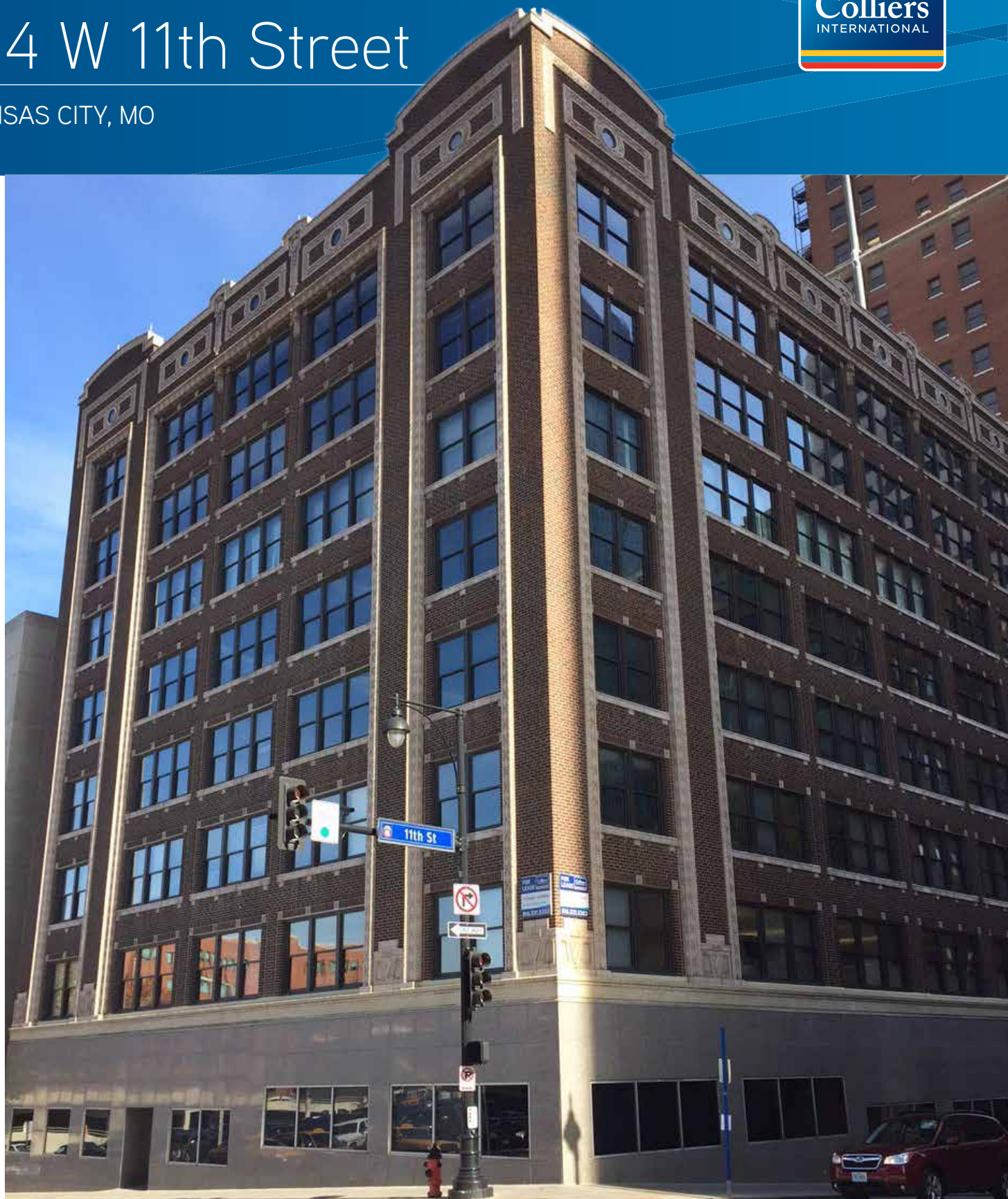


FOR LEASE > HISTORIC RAILROAD BUILDING

# 114 W 11th Street

KANSAS CITY, MO



EVAN WARWICK  
+1 816 556 1137  
KANSAS CITY, MO  
[evan.warwick@colliers.com](mailto:evan.warwick@colliers.com)

PAT COPPINGER  
+1 816 556 1110  
KANSAS CITY, MO  
[pat.coppinger@colliers.com](mailto:pat.coppinger@colliers.com)

COLLIERS INTERNATIONAL  
4520 Main Street, Suite 1000  
Kansas City, MO 64111  
[www.colliers.com](http://www.colliers.com)

FOR LEASE > HISTORIC RAILROAD BUILDING

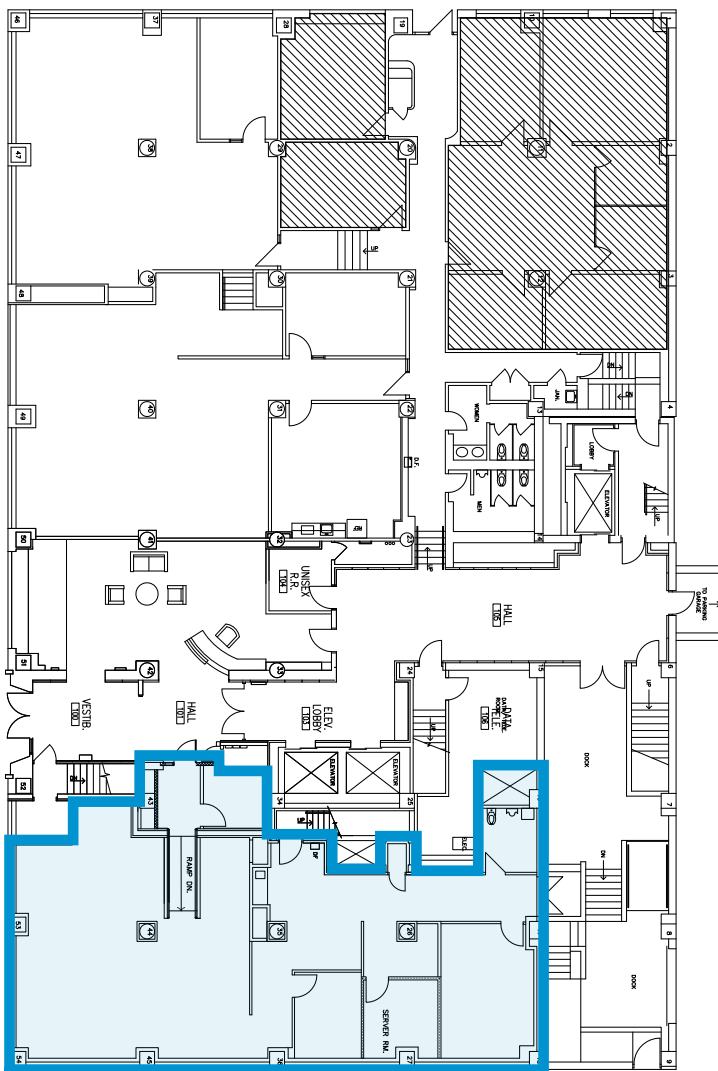
# 114 W 11th Street

KANSAS CITY, MO

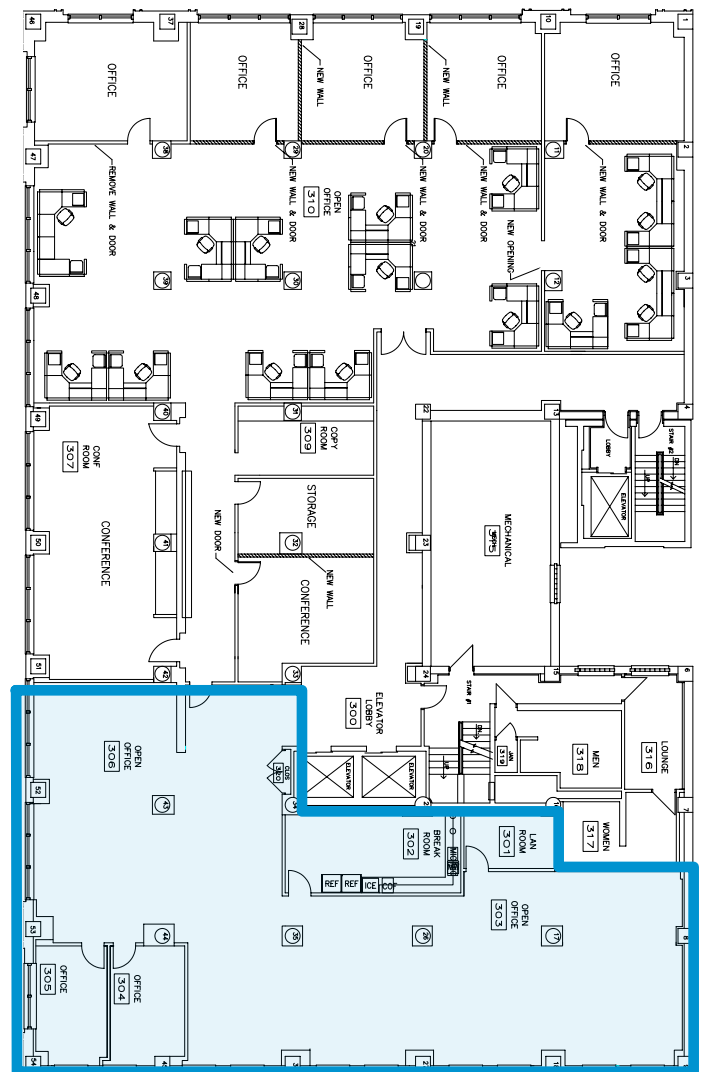
## Space Available

- > First Floor 2,337 RSF
- > Third Floor 5,364 RSF

1st Floor



3rd Floor



FOR LEASE > HISTORIC RAILROAD BUILDING

# 114 W 11th Street

KANSAS CITY, MO



## Building Amenities

- > Historically renovated building listed on the National Register of Historic Places
- > On-site management
- > Located in the heart of the CBD
- > Card key access system
- > 24 / 7 on-site security
- > Ample covered parking available in attached garage

## Contact Us

EVAN WARWICK  
+1 816 556 1137  
KANSAS CITY, MO  
[evan.warwick@colliers.com](mailto:evan.warwick@colliers.com)

PAT COPPINGER  
+1 816 556 1110  
KANSAS CITY, MO  
[pat.coppinger@colliers.com](mailto:pat.coppinger@colliers.com)

COLLIERS INTERNATIONAL  
4520 Main Street, Suite 1000  
Kansas City, MO 64111  
[www.colliers.com](http://www.colliers.com)