

Industrial Land
Build to Suit

4501 Early Road

Harrisonburg, VA



I-81 Distribution Center 4501 Early Road Harrisonburg, VA

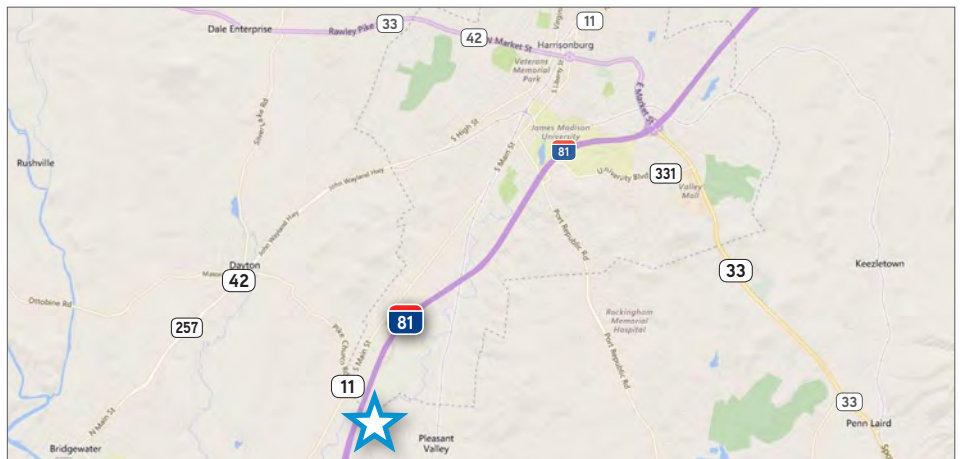
250,000-301,000 SF
Proposed Industrial Facility

JOHN LESINSKI

Executive Vice President
DIR +1 703 394 4846
MOB +1 540 671 5721
john.lesinski@colliers.com

BEN LUKE

Assistant Vice President
DIR +1 703 394 4810
MOB +1 540 229 7294
ben.luke@colliers.com



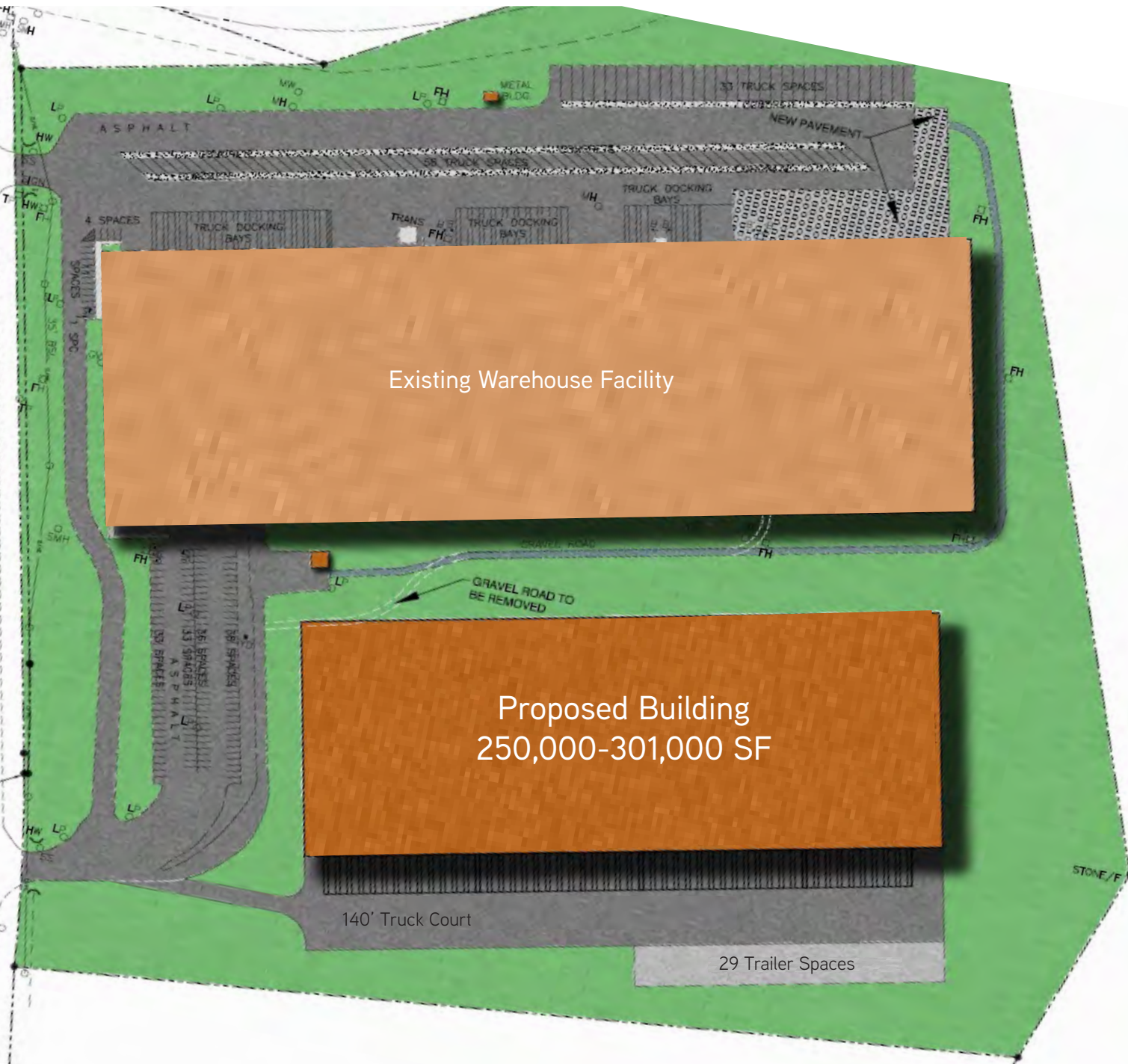
Property Highlights

- 250,000-301,000 SF proposed industrial facility/distribution center
- Fully engineered and approved by the Rockingham County Planning Dept
- Base building A&E drawings are complete
- Excellent visibility and immediate access from I-81 via Exit 243
- 60 miles from Virginia's Inland Port
- 32' clear, concrete, tilt-up walls, ESFR sprinkler system
- Build-to-suit lease (ownership amenable to discussing land sale)
- Single-side loaded facility: 860'x350'



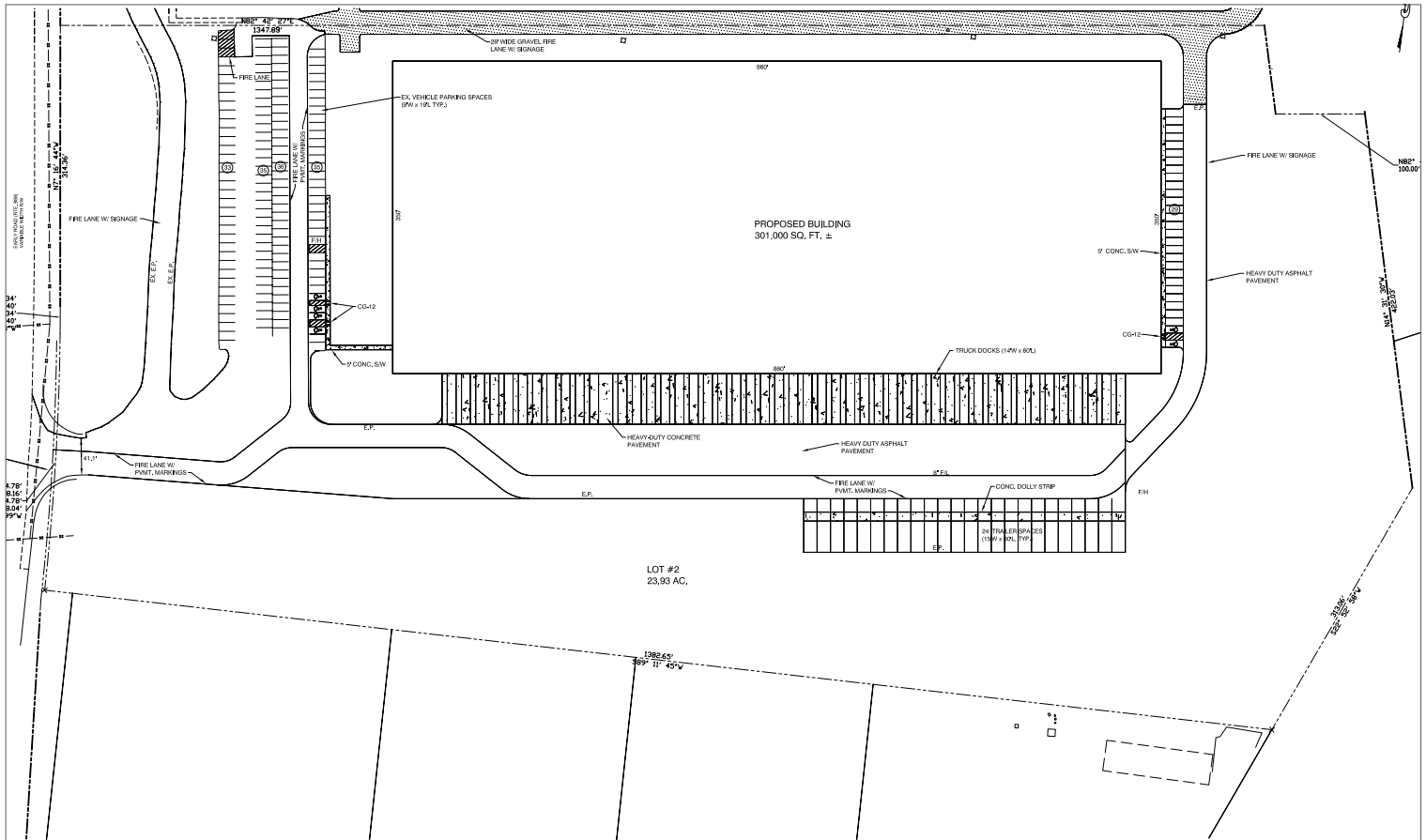
BUILD TO SUIT > 4501 Early Road

Site Plan



BUILD TO SUIT > 4501 Early Road

Site Plan



Contact Us

JOHN LESINSKI

MOB +1 540 671 5721

john.lesinski@colliers.com

BEN LUKE

DIR +1 703 394 4810

ben.luke@colliers.com



COLLIERS INTERNATIONAL
7900 Tysons One Place, Suite 260
McLean, VA 22102
703 394 4800
www.i81industrial.com