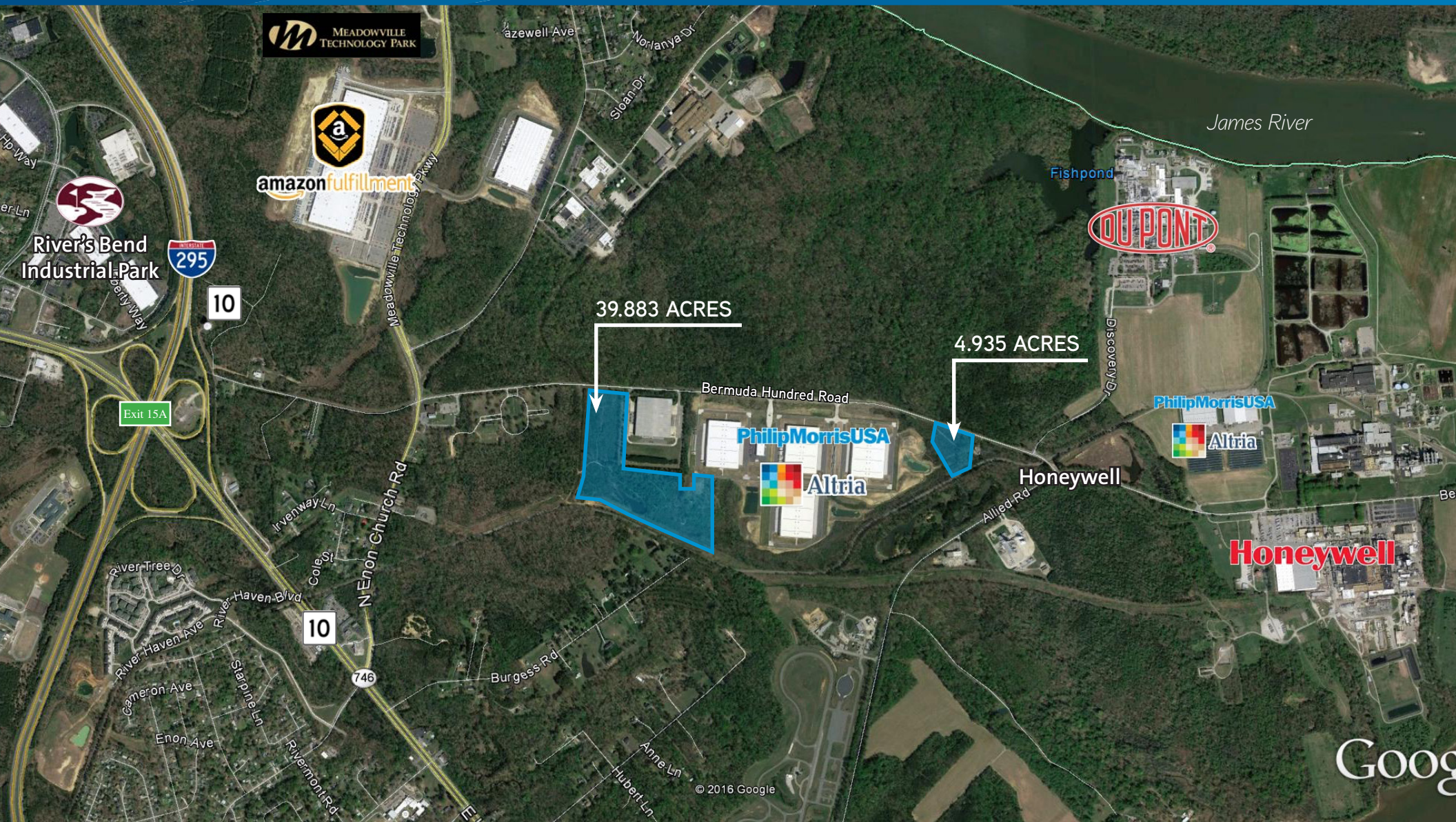


FOR SALE > 39.8 & 4.9± ACRE INDUSTRIAL SITES

2401 & 2701 Bermuda Hundred Road

CHESTER, VIRGINIA 23836



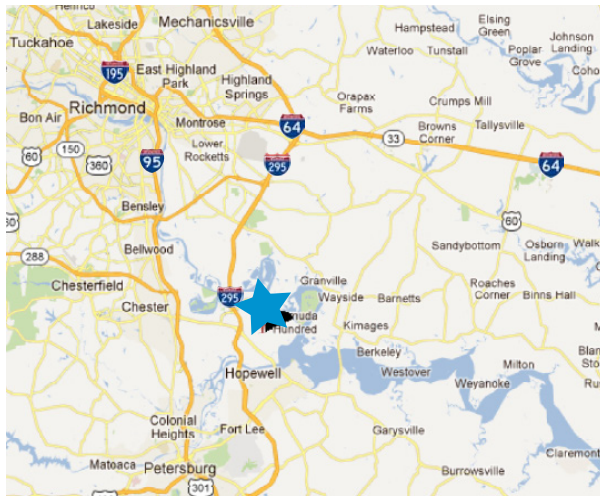
For Sale > 39.8 & 4.9± ACRE SITES - Bermuda Hundred Road

Property Summary

ACREAGE: 44.8± total acres
LOCALITY: Chesterfield County, Virginia
ZONING: I-3
ASKING PRICE: 4.9± acres Eastern Parcel - \$319,000 (\$65,000/acre)
 39.9± acres Western Parcel - \$997,000 (\$25,000/acre)

Property Features

TOPOGRAPHY: Flat to sloping terrain
WATER: 20" line on site
SEWER: 10" gravity line & stubs
 8" force main
ADDITIONAL: Property is positioned to offer availability for redundant power
 Easy access to I-95, I-295, and U.S. Route 10



visit: www.chesterfieldbusiness.com

AGENT: BILL MATTOX, SIOR
 804 591 2428
 RICHMOND, VA
bill.matttox@colliers.com

AGENT: DAVID WILLIAMS, SIOR, CCIM
 804 591 2405
 RICHMOND, VA
david.m.williams@colliers.com

COLLIERS INTERNATIONAL
 7200 Glen Forest Drive, Suite 200
 Richmond, VA 23226
www.colliers.com/richmond

