

FOR SALE OR LEASE >

# 630 Ardmore Boulevard

PITTSBURGH, PA 15221



## Improvements

- > 1323 SF single story office building
- > Fully air conditioned
- > Includes heated 18' x 24' car prep area
- > All utilities

## Site

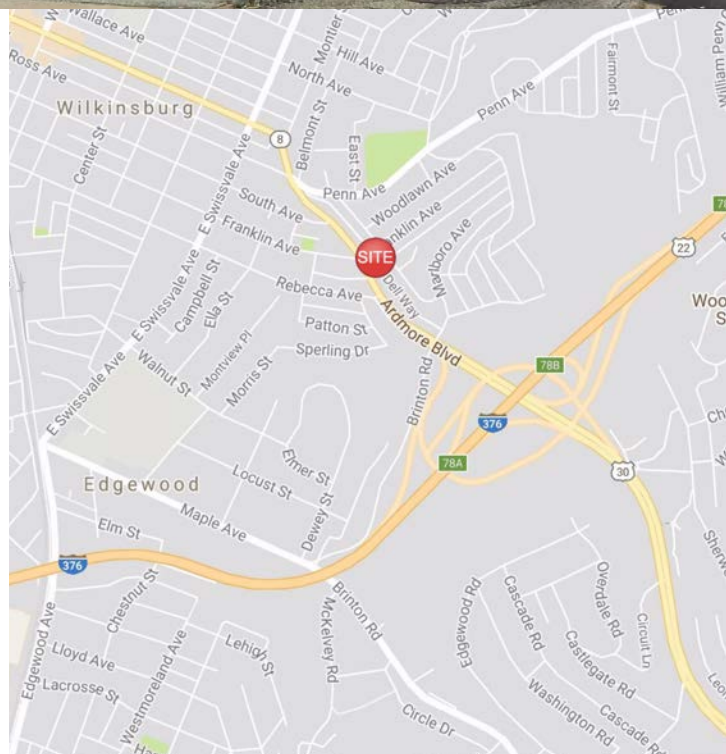
- > 11,804 SF asphalt/concrete paved lot
- > Capacity for 19 vehicles
- > 100% fenced
- > Access to Ardmore Boulevard (78' frontage) and Franklin Avenue
- > Zoned C-1 / Neighborhood Commercial District

**Available:** January 1, 2018

**Survey & Floor Plan Available**

**Sale Price:** \$230,000

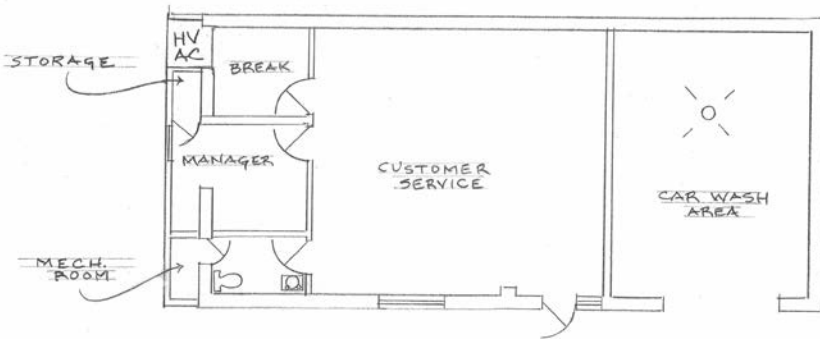
**Lease Rate:** \$2300/month NNN



JOHN BILYAK SIOR, CCIM  
PRINCIPAL | PITTSBURGH  
INDUSTRIAL BROKERAGE  
412 321 4200 | EXT. 209  
john.bilyak@colliers.com

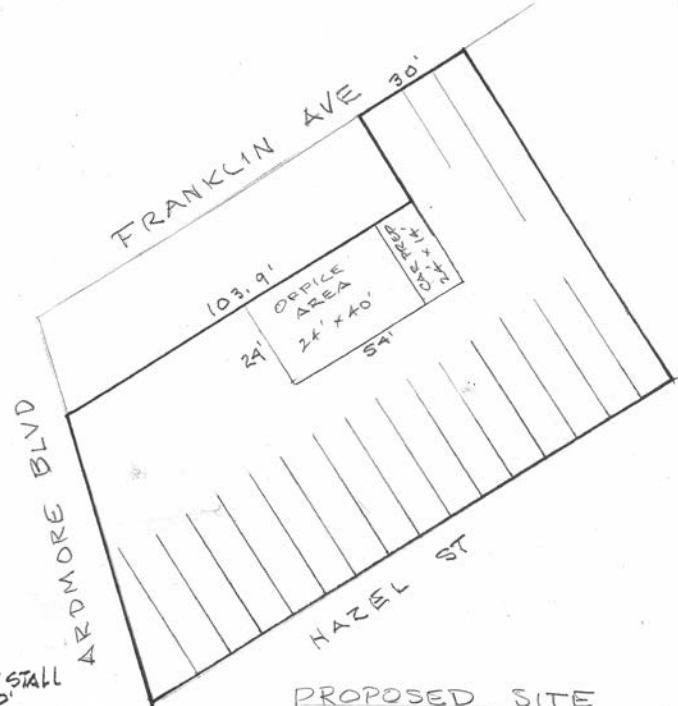
RAYMOND OROWETZ P.E.  
VICE PRESIDENT | PITTSBURGH  
INDUSTRIAL BROKERAGE  
412 321 4200 | EXT 207  
ray.orowetz@colliers.com

COLLIERS INTERNATIONAL | PITTSBURGH  
Two Gateway Center  
603 Stanwix Street, Suite 125  
Pittsburgh, PA 15222  
www.colliers.com

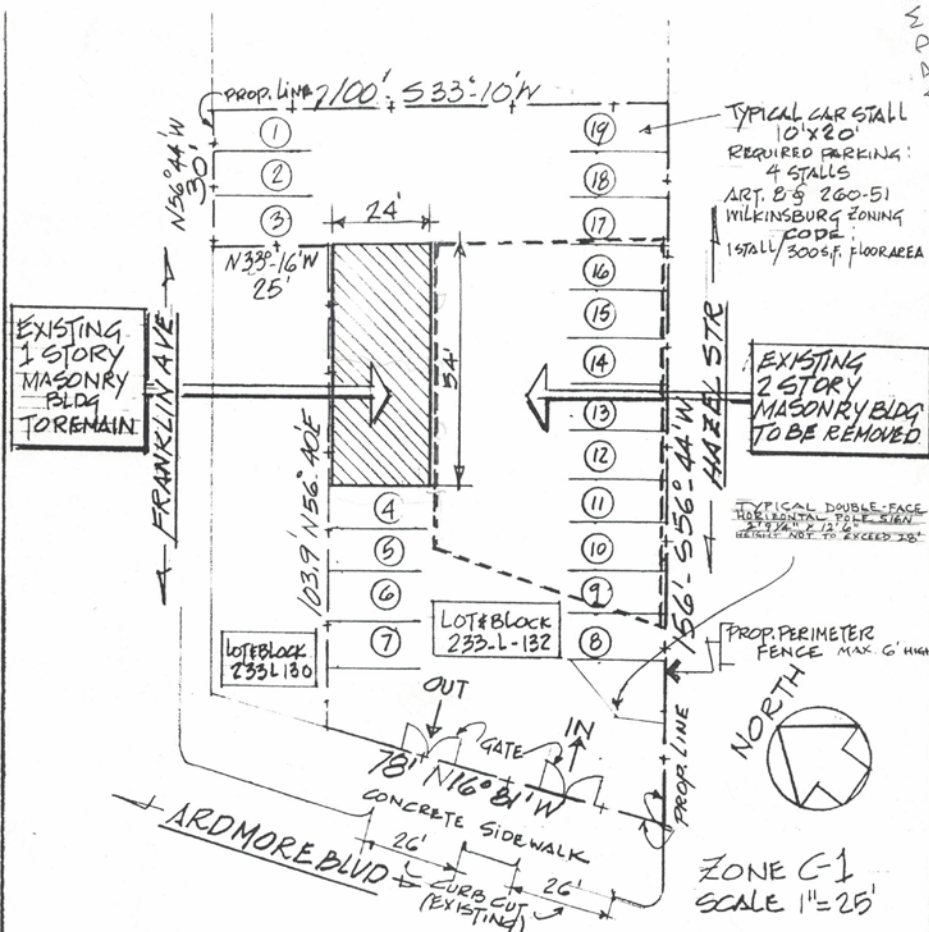


ENTERPRISE RENT-A-CAR  
630 ARDMORE BLVD.  
SCALE 1/8" = 1'-0"

DWG DATE 12-11-97  
2-9-98  
8-12-98  
8-16-98  
11-8-98



PROPOSED SITE  
ARDMORE BLVD AT PARKWAY  
WILKINSBURG PA  
SCALE 1" = 25' 7-17-97



PLAN OF PROPERTY of  
630 ARDMORE BLVD LOT#BLOCK 233-L-132

WILKINSBURG-PENNSYLVANIA

FOR FOURSOME PARTNERS ASSOCIATES  
243 MOREWOOD AVE PITTSBURGH PA 15213

(FORMER OWNER: ARC ALLEGHENY 711 BINGHAM AVE Pgh 15203)

PROPOSED USE: AUTOMOBILE LEASING & RENTAL OPERATION.

FEB 1998



## Contact Us

JOHN BILYAK  
PRINCIPAL | PITTSBURGH  
INDUSTRIAL BROKERAGE  
412 321 4200 | EXT. 209  
[john.bilyak@colliers.com](mailto:john.bilyak@colliers.com)

RAYMOND OROWETZ P.E.  
VICE PRESIDENT | PITTSBURGH  
INDUSTRIAL BROKERAGE  
412 321 4200 | EXT. 207  
[ray.orowitz@colliers.com](mailto:ray.orowitz@colliers.com)

COLLIERS INTERNATIONAL | PITTSBURGH  
Two Gateway Center, Suite 125  
603 Stanwix Street  
Pittsburgh, PA 15222  
[www.colliers.com/pittsburgh](http://www.colliers.com/pittsburgh)