



FOR LEASE

Matthews Brothers Building
301 W. Wisconsin Avenue
MILWAUKEE, WI

Dan Wroblewski | 414 278 6813
Sal Strehlow | 414 278 6846



BUILDING OVERVIEW

Building Name: Matthews Brothers

Address: 301 W. Wisconsin Avenue
Milwaukee, WI

Building Size: 39,953 RSF

Availability: Total available: 9,041 RSF

Base Rental Rate: \$18.50/RSF, MG

Parking: Abundance of parking available in the attached parking structure. Up to 10:1000.

Property Highlights:

- Located in the heart of the Westtown neighborhood
- Connectivity to Milwaukee's sywalk system
- Interior access to the Grand Avenue and its abundant amenities
- Secured building with 24-hour key card access
- Located along multiple bus routes
- Monument and lobby directory signage opportunities
- Common area conference facility seats up to 16
- Two 8-passenger elevator cabs service the building's six floors

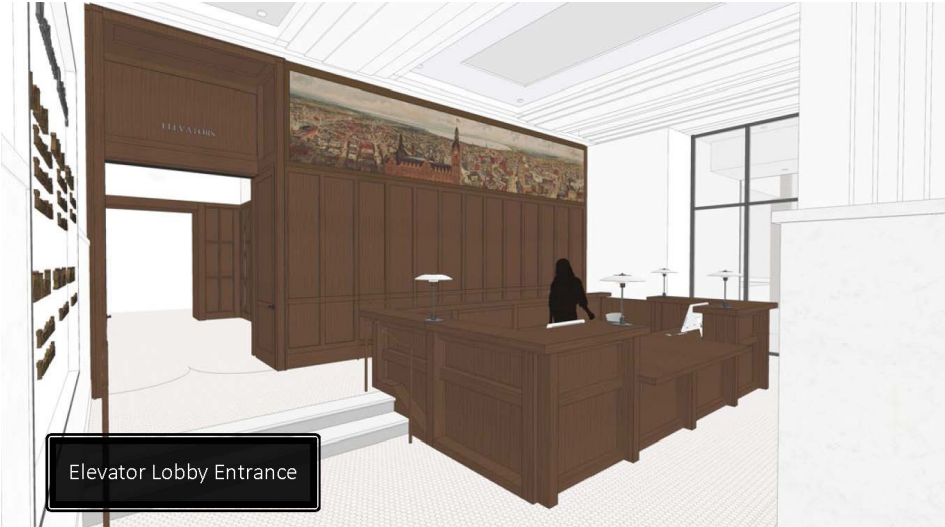
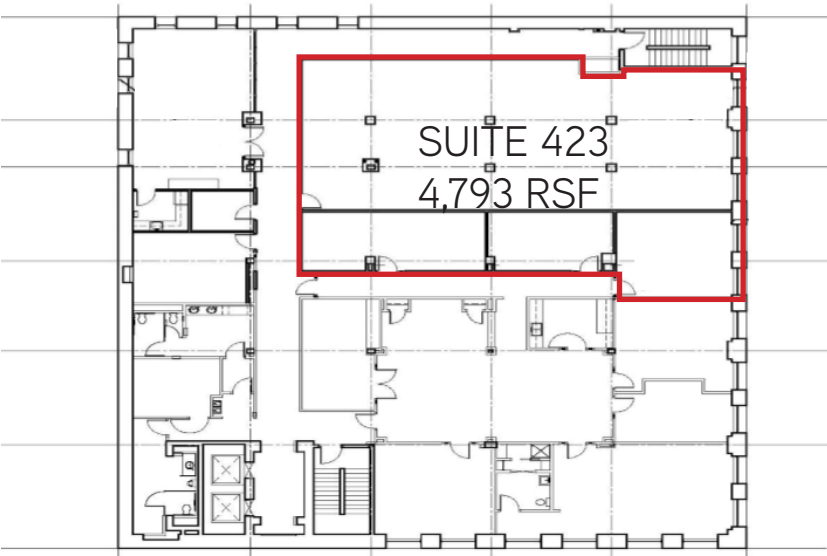


Availability

THIRD FLOOR



FOURTH FLOOR



JOIN THE MOMENTUM



BE A PART OF
SOMETHING
BIGGER





DAN WROBLEWSKI

414 278 6813

dan.wroblewski@colliers.com

SAL STREHLOW

414 278 6846

sal.strehlow@colliers.com



COLLIERS INTERNATIONAL | 833 E. Michigan Street, Suite 500 | Milwaukee, WI 53202 | 414 276 9500 | www.colliers.com

This document/email has been prepared by Colliers International for advertising and general information only. Colliers International makes no guarantees, representations or warranties of any kind, expressed or implied, regarding the information including, but not limited to, warranties of content, accuracy and reliability. Any interested party should undertake their own inquiries as to the accuracy of the information. Colliers International excludes unequivocally all inferred or implied terms, conditions and warranties arising out of this document and excludes all liability for loss and damages arising there from. This publication is the copyrighted property of Colliers International and /or its licensor(s). © 2016. All rights reserved. This communication is not intended to cause or induce breach of an existing listing agreement.