

VIEW ONLINE

colliers.com/arkansas
centralcrossings.com

Land For Sale

45 +/- Acres

11301 AR 72 Hwy W., Centerton | AR

Maintained soccer fields and 12,600 square foot building on site in Centerton, AR. Located on Highway 72 and surrounded by upscale neighborhoods. This is the only property zoned commercial off Hwy 72 and has great potential opportunity for retail, restaurant, and leisure.

Contact us:

Steve Lane

Managing Director | Arkansas

+1 479 845 1515

steve.lane@colliers.com

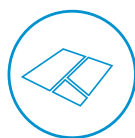
Darryl Napolitano

Brokerage & Development | Arkansas

+1 479 845 1520

darryl.napolitano@colliers.com

FEATURES



45 +/- Acres



Zoned Commercial



2 miles from the new Bentonville West High School and 5 miles to the new Bella vista Bypass

\$5,100,000



Colliers International

4204 S. Pinnacle Hills Pkwy | Suite 102

Rogers, AR 72758

P: +1 479 845 6000

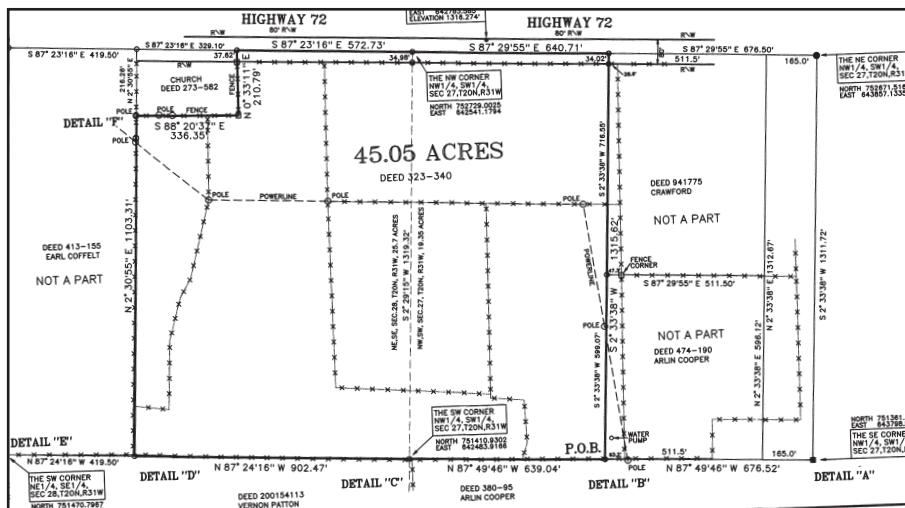
www.colliers.com/arkansas

This document has been prepared by Colliers International for advertising and general information only. Colliers International makes no guarantees, representations or warranties of any kind, expressed or implied, regarding the information including, but not limited to, warranties of content, accuracy and reliability. Any interested party should undertake their own inquiries as to the accuracy of the information. Colliers International excludes unequivocally all inferred or implied terms, conditions and warranties arising out of this document and excludes all liability for loss and damages arising there from. This publication is the copyrighted property of Colliers International and/or its licensor(s). ©2017. All rights reserved.

< Aerial



SURVEY >



Contact us:

Steve Lane

Managing Director | Arkansas

+1 479 845 1515

steve.lane@colliers.com

Darryl Napolitano

Brokerage & Development | Arkansas

+1 479 845 1520

darryl.napolitano@colliers.com

DEMOGRAPHICS >

	1 Mile	3 Miles	5 Miles
Est. Population 2017	2,503	26,459	55,989
Proj. Population 2022	2,972	30,823	64,501
Est. Households 2017	784	9,357	20,546
Proj. Households 2022	931	10,936	23,670
Avg. Est. Household Income 2017	\$103,328	\$93,670	\$87,266

Colliers International

4204 S. Pinnacle Hills Pkwy | Suite 102

Rogers, AR 72758

P: +1 479 845 6000

www.colliers.com/arkansas

