

FOR LEASE > SPEC WAREHOUSE SPACE



# Port I-95 Industrial Park

JIMMY DELOACH PKWY. SAVANNAH, GA 31322 (BLOOMINGDALE)



## Warehouse Features - Phase 1

- > 33,750 SF Available
- > Buildings dimensions: 180' Deep x 187.5' Wide
- > 4 Dock doors (more available)
- > BTS office
- > ESFR sprinklers
- > Heavy floors, 8" reinforced, 4,000 psi
- > Commercial frontage on Jimmy DeLoach

## Port-95 Industrial Park Highlights

- > Phase 1 completed: March 2019
- > Phase 2 delivery Q4 2019
- > Concrete and metal construction
- > Median cut access onto Jimmy DeLoach
- > Located only 4.5 miles from Interstate-95
- > No inventory tax

**LEASE RATE REDUCED: \$4.95/SF, NNN**

DANNY CHASE, SIOR  
912 662 8012  
SAVANNAH, GA  
danny.chase@colliers.com

COLLIERS INTERNATIONAL  
545 E. York Street  
Savannah, GA 31401  
www.colliers.com/savannah



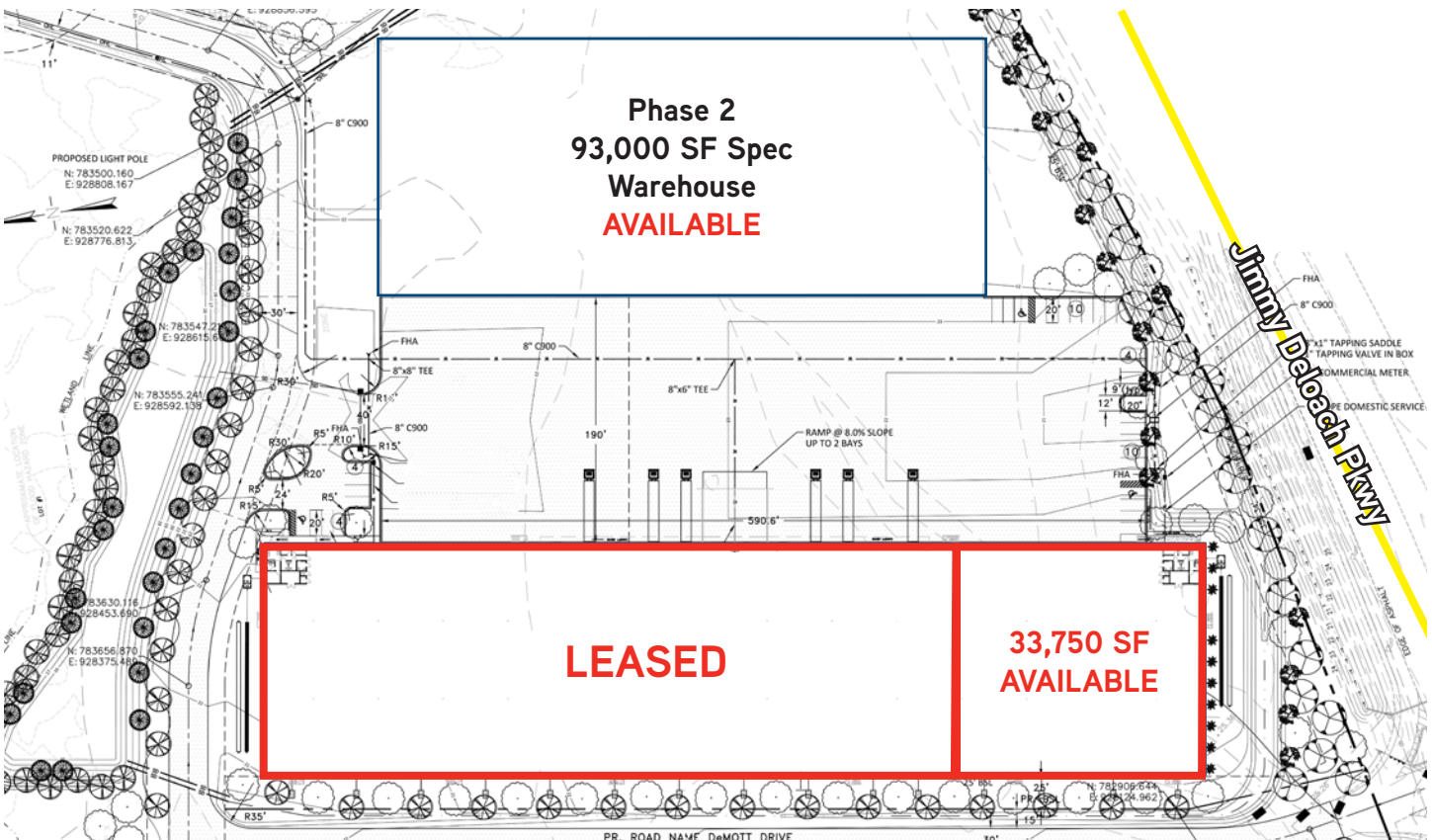
FOR LEASE > SPEC WAREHOUSE SPACE

Colliers  
INTERNATIONAL

# Port I-95 Industrial Park

JIMMY DELOACH PKWY, SAVANNAH, GA 31322 (BLOOMINGDALE)

130,500 SF Warehouse | March 2019 Delivery



DANNY CHASE, SIOR  
912 662 8012  
SAVANNAH, GA  
danny.chase@colliers.com

The information contained herein has been obtained from sources deemed reliable. While every reasonable effort has been made to ensure its accuracy, we cannot guarantee it. No responsibility is assumed for any inaccuracies. Readers are encouraged to consult their professional advisers prior to acting on any of the material contained in this report.



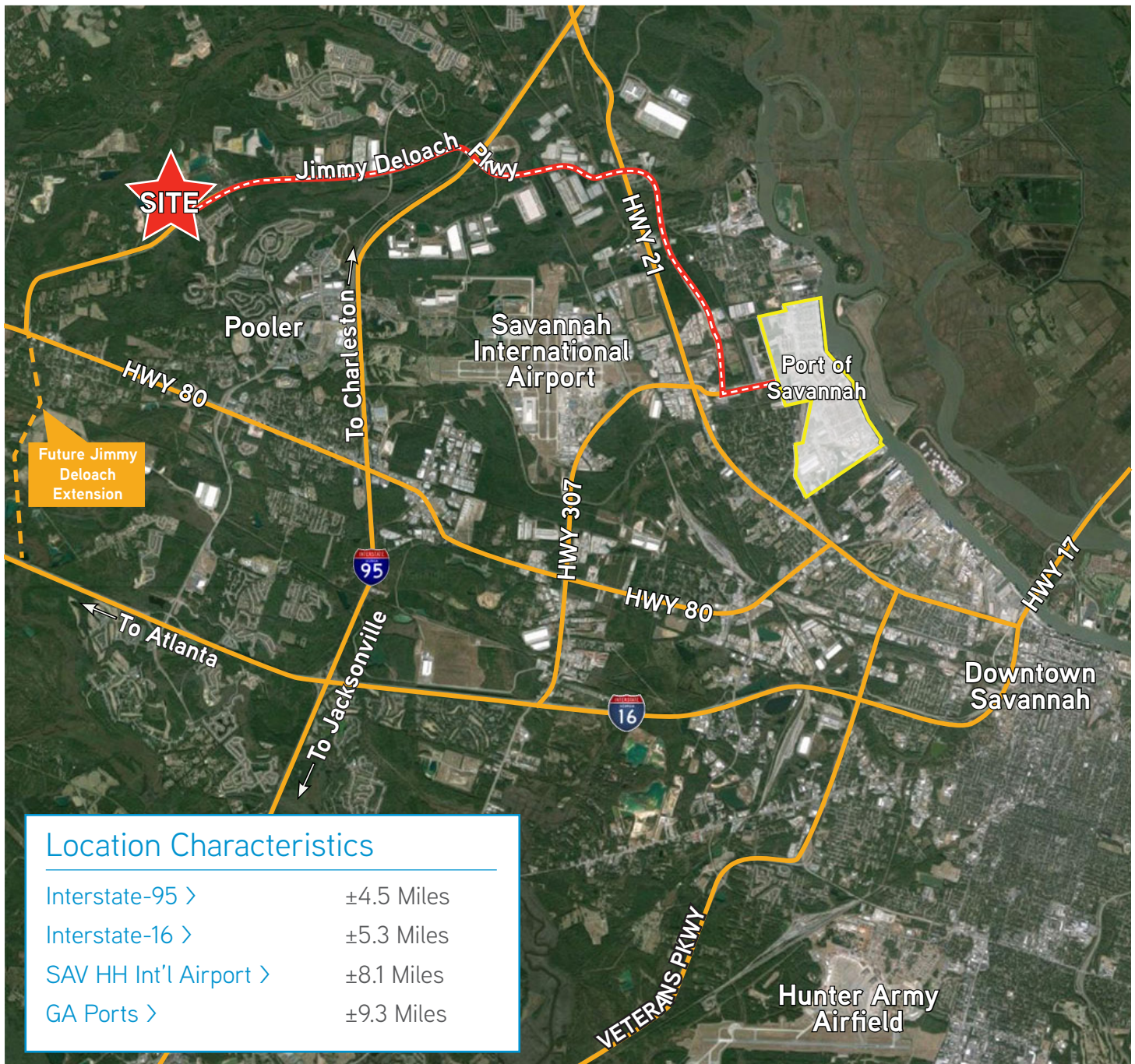
FOR LEASE > SPEC WAREHOUSE SPACE

Colliers  
INTERNATIONAL

# Port I-95 Industrial Park

JIMMY DELOACH PKWY, SAVANNAH, GA 31322 (BLOOMINGDALE)

## Savannah Area Map



DANNY CHASE, SIOR  
912 662 8012  
SAVANNAH, GA  
danny.chase@colliers.com

The information contained herein has been obtained from sources deemed reliable. While every reasonable effort has been made to ensure its accuracy, we cannot guarantee it. No responsibility is assumed for any inaccuracies. Readers are encouraged to consult their professional advisers prior to acting on any of the material contained in this report.



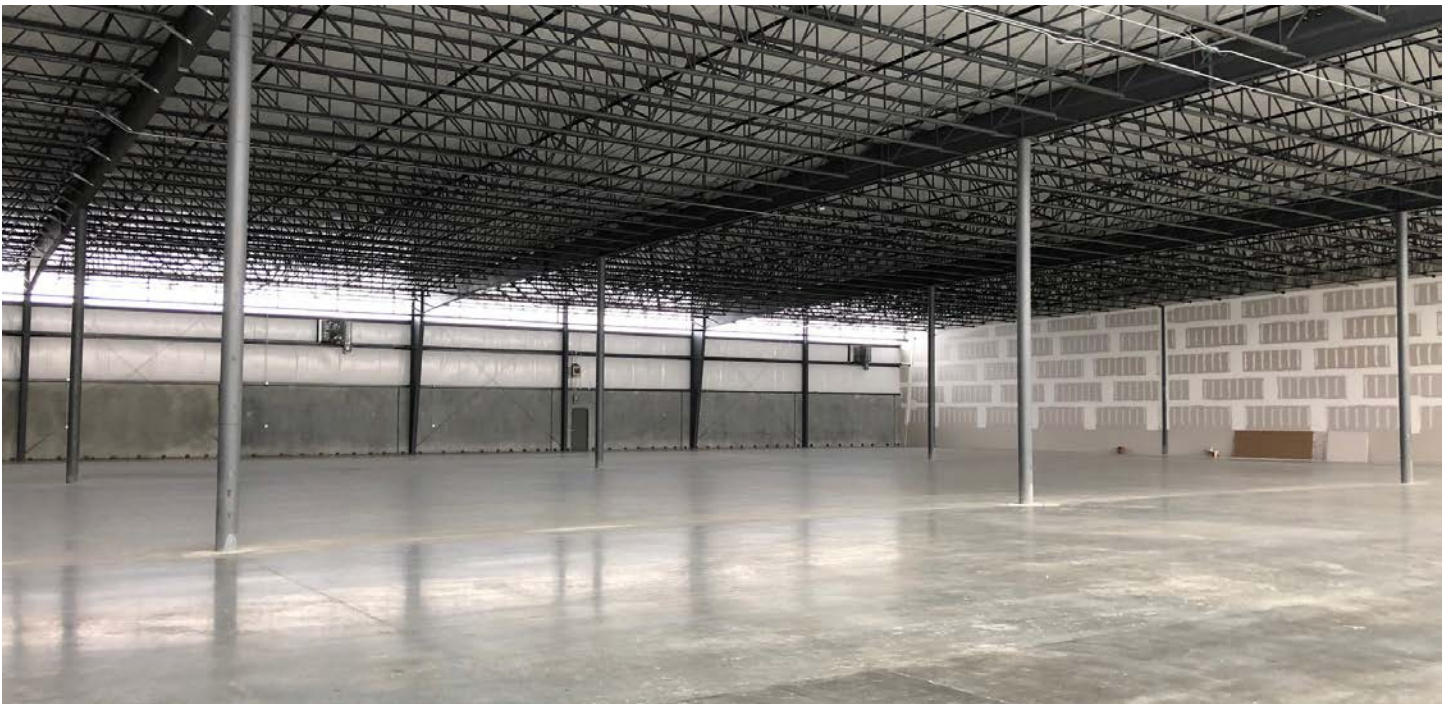
FOR LEASE > SPEC WAREHOUSE SPACE

Colliers  
INTERNATIONAL

# Port I-95 Industrial Park

JIMMY DELOACH PKWY, SAVANNAH, GA 31322 (BLOOMINGDALE)

**130,500 SF Warehouse | Completed March 2019**



DANNY CHASE, SIOR  
912 662 8012  
SAVANNAH, GA  
[danny.chase@colliers.com](mailto:danny.chase@colliers.com)

The information contained herein has been obtained from sources deemed reliable. While every reasonable effort has been made to ensure its accuracy, we cannot guarantee it. No responsibility is assumed for any inaccuracies. Readers are encouraged to consult their professional advisers prior to acting on any of the material contained in this report.