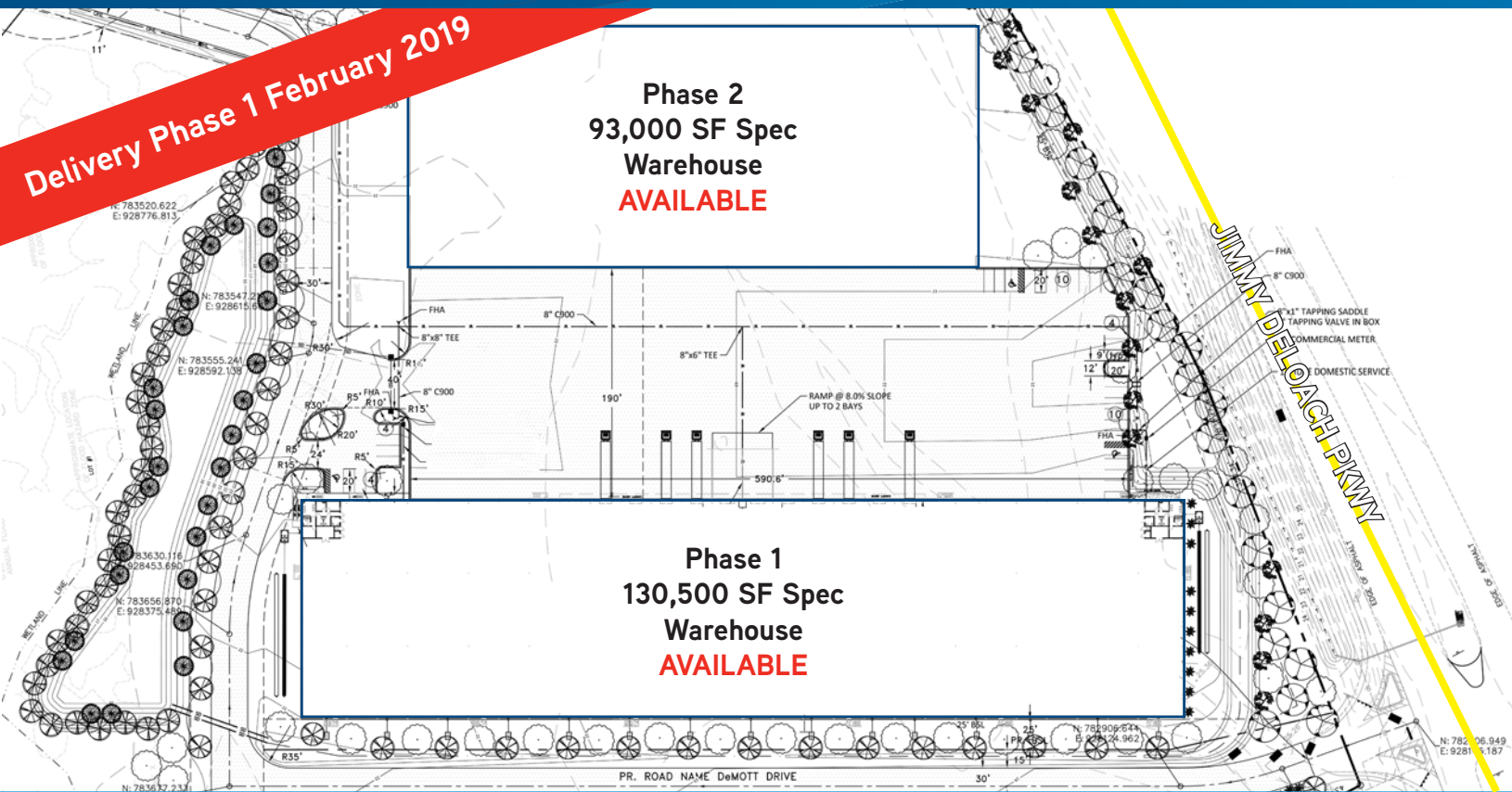


FOR LEASE > SPEC WAREHOUSE SPACE



Port-95 Industrial Park

JIMMY DELOACH PKWY. SAVANNAH, GA 31322 (BLOOMINGDALE)



Warehouse Features - Phase 1

- > 130,500 SF, divisible to 50,000
- > Buildings dimensions: 725' x 180'
- > Front load
- > 1 Drive-in door (12' x 16')
- > 20 Dock doors
- > 10 40,000 lb pit levelers
- > 10 edge of dock levelers
- > BTS office
- > ESFR sprinklers
- > Heavy floors, 8" reinforced, 4,000 psi

Port-95 Industrial Park Highlights

- > Port-95 Industrial Park: 50,000 - 130,500 SF
- > Phase 1 delivery: February 2019
- > Phase 2 delivery Q4 2019
- > Concrete and metal construction
- > Median cut access onto Jimmy DeLoach
- > Located only 4.5 miles from Interstate-95

LEASE RATE: Please Inquire

DANNY CHASE, SIOR
912 662 8012
SAVANNAH, GA
danny.chase@colliers.com

COLLIERS INTERNATIONAL
545 E. York Street
Savannah, GA 31401
www.colliers.com/savannah

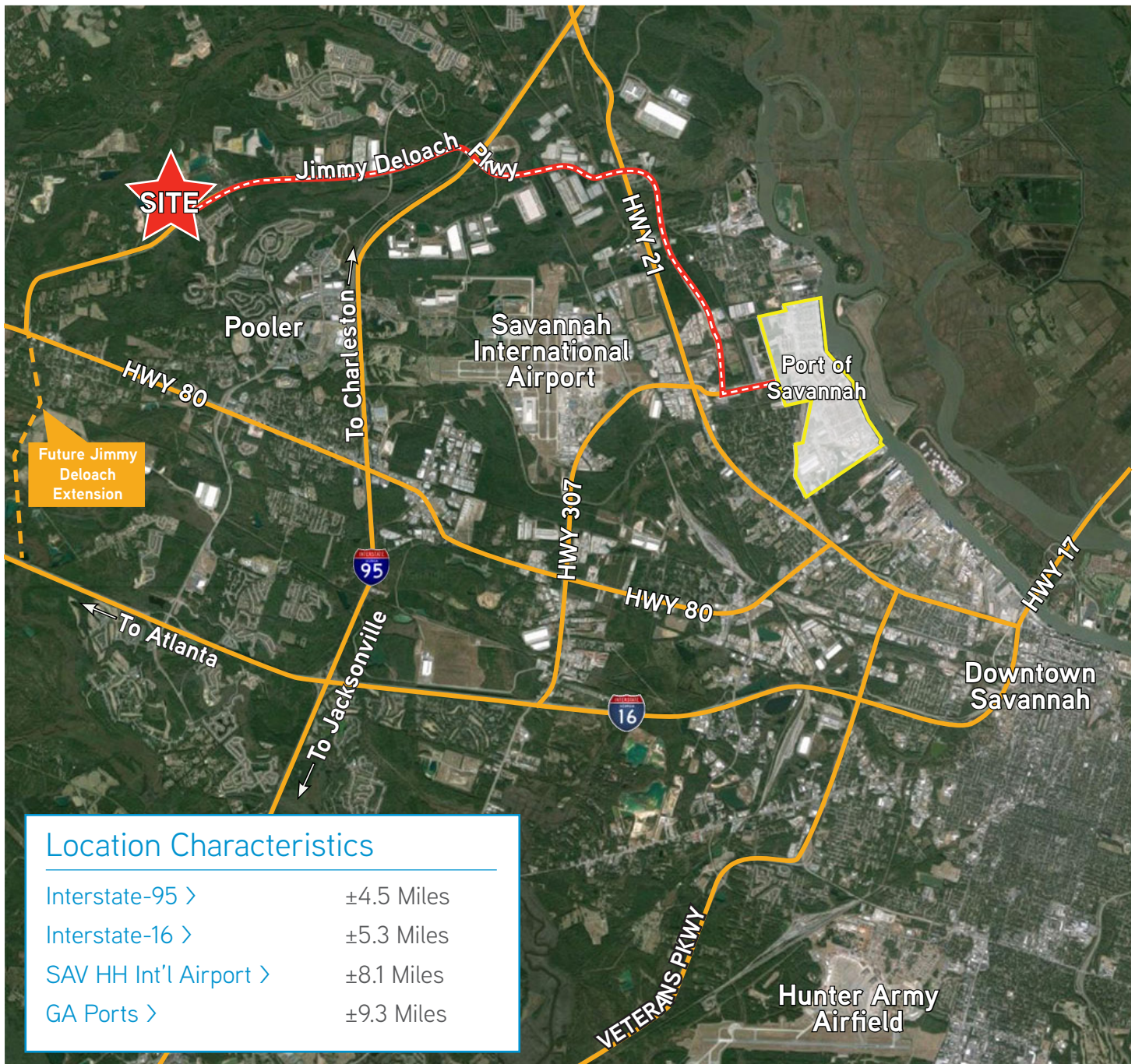
FOR LEASE > SPEC WAREHOUSE SPACE

Colliers
INTERNATIONAL

Port I-95 Industrial Park

JIMMY DELOACH PKWY, SAVANNAH, GA 31322 (BLOOMINGDALE)

Savannah Area Map



DANNY CHASE, SIOR
912 662 8012
SAVANNAH, GA
danny.chase@colliers.com

The information contained herein has been obtained from sources deemed reliable. While every reasonable effort has been made to ensure its accuracy, we cannot guarantee it. No responsibility is assumed for any inaccuracies. Readers are encouraged to consult their professional advisers prior to acting on any of the material contained in this report.