

FOR LEASE > DOWNTOWN MOUNTAIN VIEW OFFICE

1,109 Square Feet

236 CASTRO ST, 2ND FLOOR, MOUNTAIN VIEW, CA

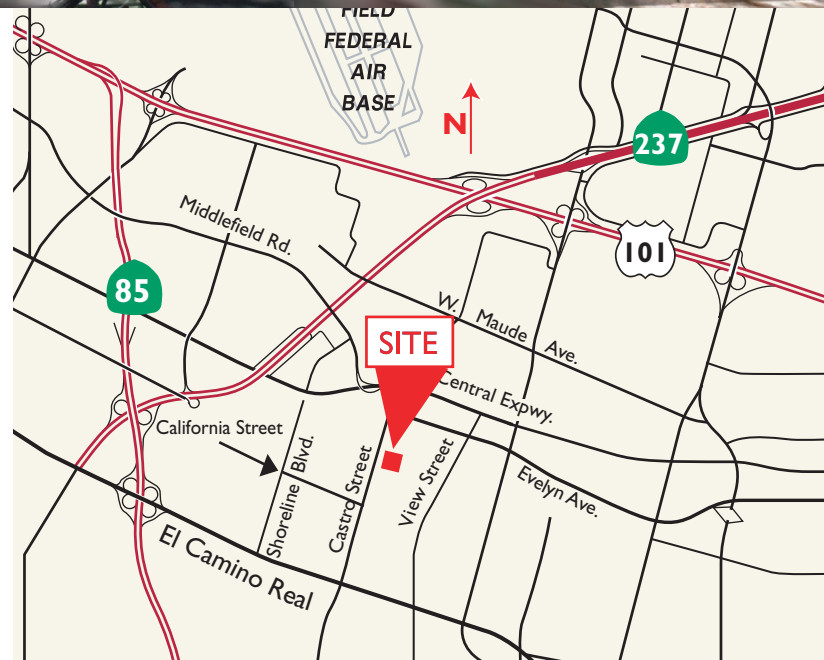


Property Highlights

- 2nd floor office
- Prime downtown MV location
- 1 block to Caltrain station (47 min ride to SF)
- Available now
- \$3.99 gross

Available Suite

#202: 1,109 SF

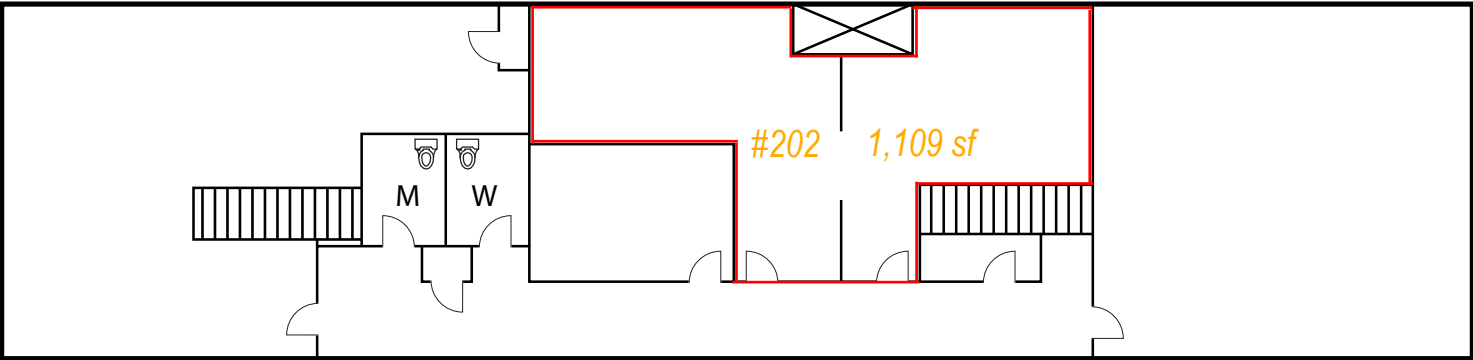


BRETT TAYLOR
+1 650 492 5233
brett.taylor@colliers.com
CA License No. 01856608

COLLIERS INTERNATIONAL
450 West Santa Clara Street
San Jose, CA 95113
+1 408 282 3800 Main
+1 408 292 8100 Fax
www.colliers.com

FLOOR PLAN

± 1,109 SF



Drawings not exact/not to scale. The information furnished has been obtained from sources we deem reliable and is submitted subject to errors, omissions and changes. Although Colliers International has no reason to doubt its accuracy, we do not guarantee it. All information should be verified by the recipient prior to lease, purchase, exchange, or execution of legal documents. © 2017 Colliers International