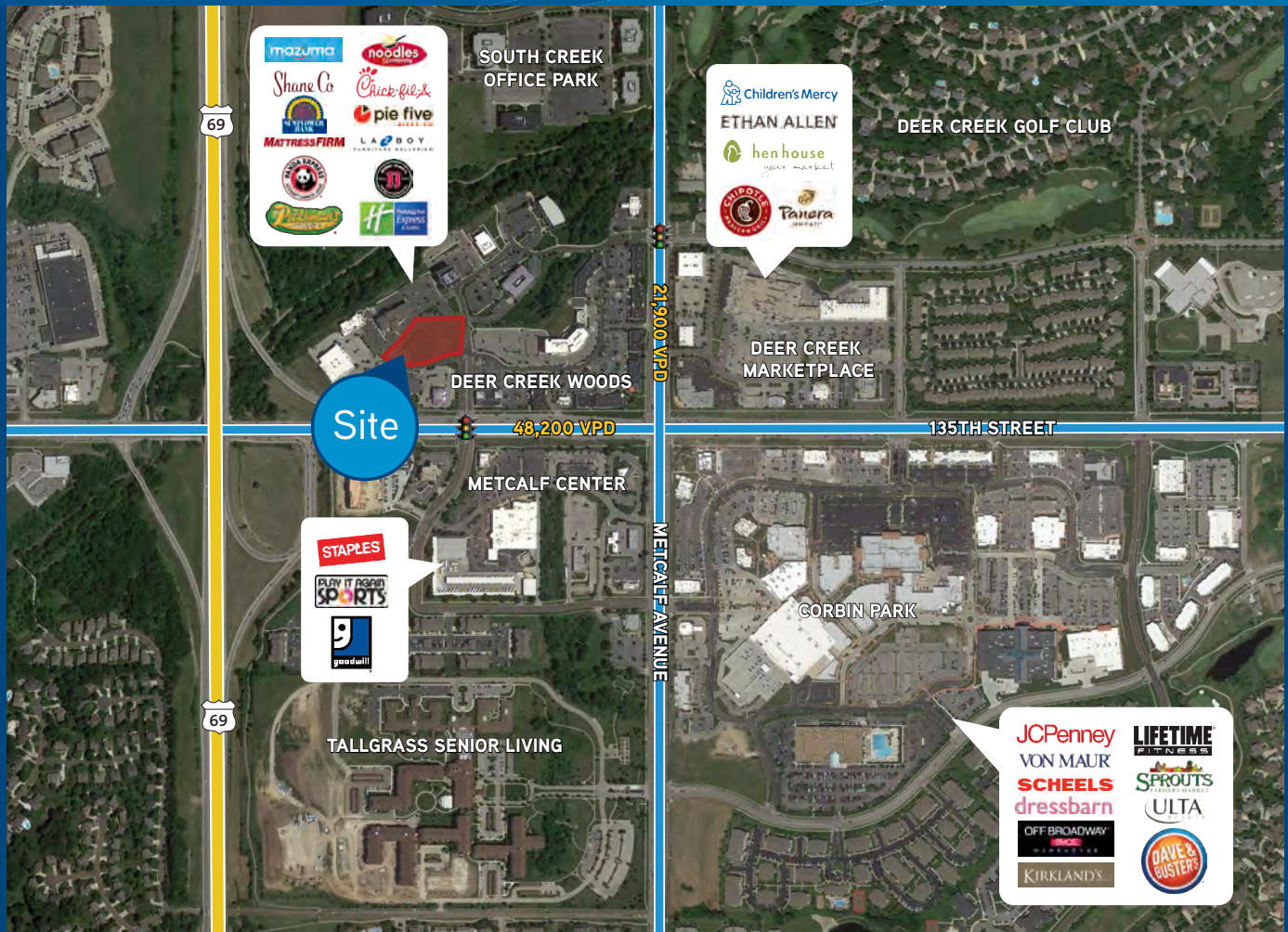


RETAIL/OFFICE PADS FOR SALE

7418 W 135th Street

DEER CREEK WOODS, OVERLAND PARK, KS

Colliers
INTERNATIONAL



Property Features

- › 1.74 acres for sale (Lot 1: 39,155 SF; Lot 2: 36,578 SF)
- › Mixed-use parking spaces available
- › Overland Park's hottest retail corridor
- › Entrance and visibility to 48,200 cars per day at signalized intersection on 135th Street
- › Anchored by Mazuma Credit Union with 300 employees
- › Next to Holiday Inn Express and many restaurant amenities
- › Drive-thru available
- › Outstanding demographics, including an average household income of \$147,037, and a daytime population of 69,228 in a 3-mile radius

This document has been prepared by Colliers International for advertising and general information only. Colliers International makes no guarantees, representations or warranties of any kind, expressed or implied, regarding the information including, but not limited to, warranties of content, accuracy and reliability. Any interested party should undertake their own inquiries as to the accuracy of the information. Colliers International excludes unequivocally all inferred or implied terms, conditions and warranties arising out of this document and excludes all liability for loss and damages arising there from. This publication is the copyrighted property of Colliers International and/or its licensors(s). © 2018. All rights reserved.

Contact

KIMBERLY TRANBARGER

+1 816 556 1183

KANSAS CITY, MO

kimberly.tranbarger@colliers.com

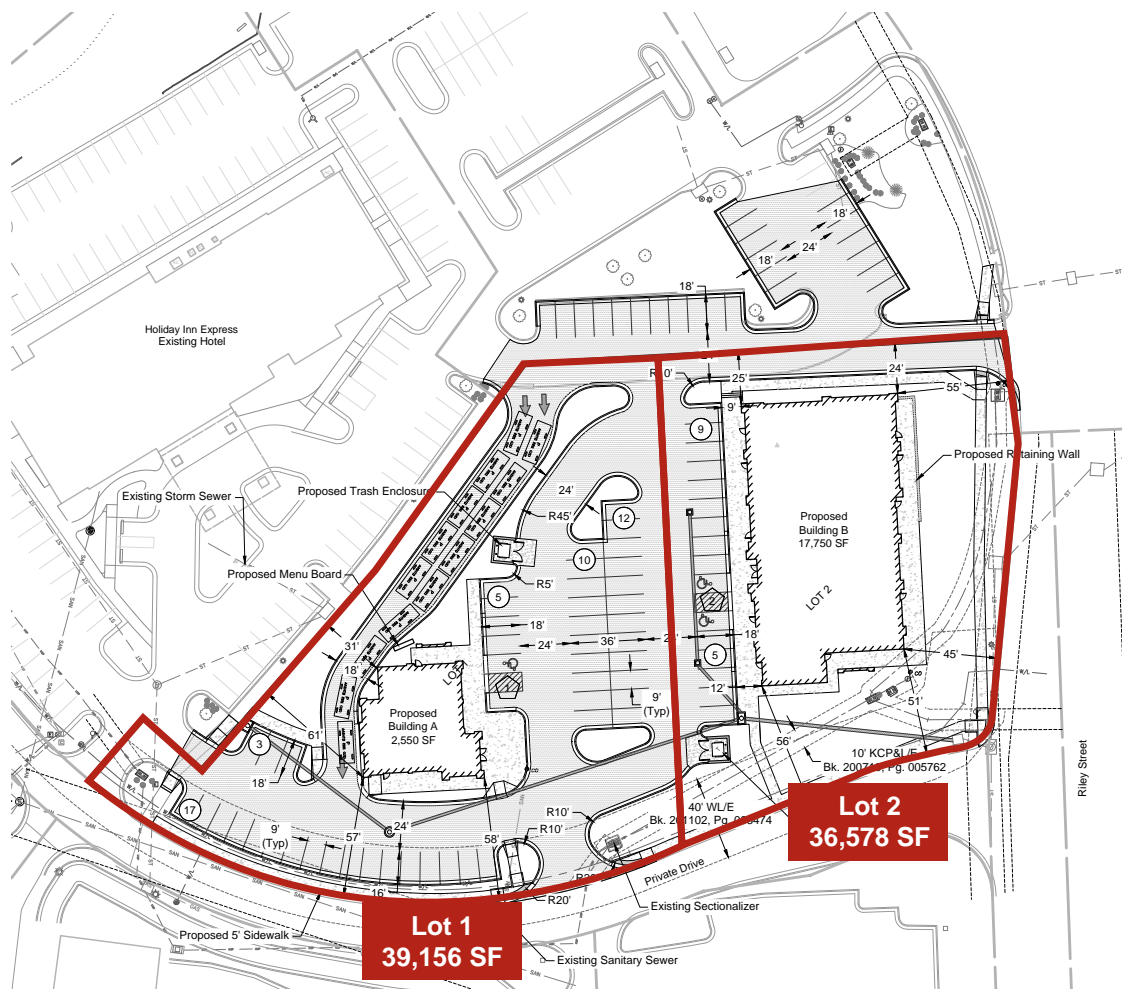
COLLIERS INTERNATIONAL
4520 Main Street, Suite 1000
Kansas City, MO 64111

www.colliers.com

MIXED-USE & RETAIL/OFFICE LAND FOR SALE

7418 W 135th Street

DEER CREEK WOODS, OVERLAND PARK, KS



Deer Creek Woods > Demographics

	1	3	5
Population	12,308	95,614	194,864
Average HHI	\$87,914	\$147,037	\$137,597
Median HHI	\$86,276	\$117,631	\$110,556
Daytime Population	10,494	66,553	142,920

KIMBERLY TRANBARGER
+1 816 556 1183
KANSAS CITY, MO
kimberly.tranbarger@colliers.com

