



For Lease

Russellville Retail Center

2301 E. Main St,
Russellville, AR 72802

SEAN GLANCY, CPA (inactive)
501 978 6580
sean.glancy@colliers.com



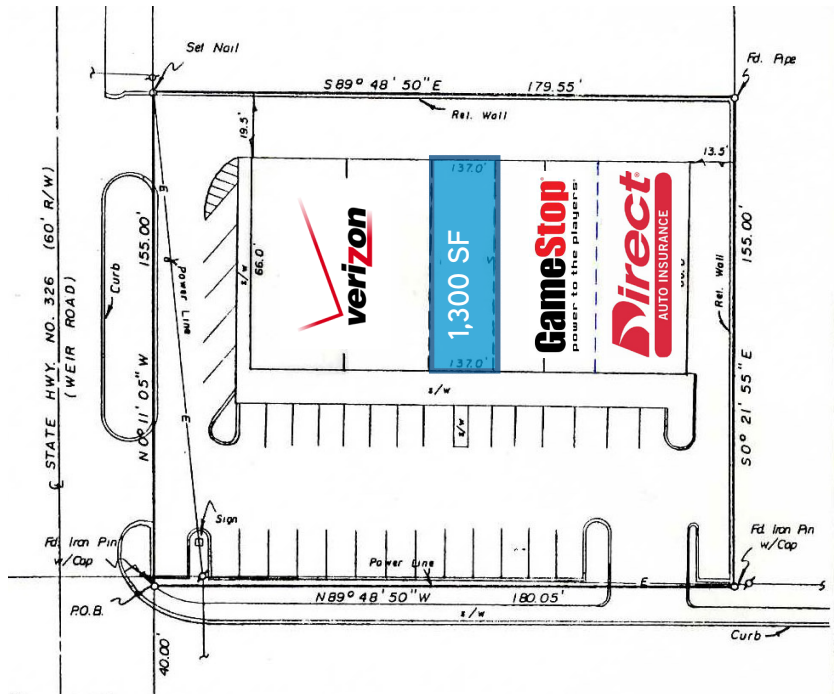
COLLIERS INTERNATIONAL
1 Allied Dr, Suite 1500
Little Rock, AR 72202
501 372 6161
www.colliers.com/arkansas

KEY FEATURES/HIGHLIGHTS

- › Building size: 8,800 SF
- › Available space: 1,300 SF
- › Lease rate: \$18.00/SF, gross
- › Signalized corner of Weir Rd and E. Main St
- › Co-tenants include: Verizon Wireless, GameStop and Direct Insurance
- › Located in Russellville's main shopping district in front of the Walmart Supercenter

FOR LEASE > Russellville Retail Center

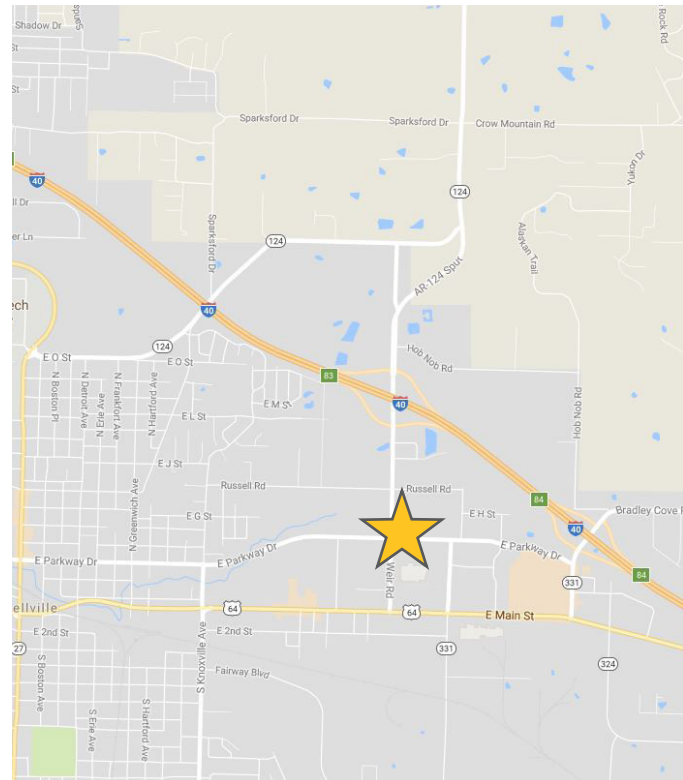
SITE PLAN



NEIGHBORHOOD AERIAL



This document has been prepared by Colliers International for advertising and general information only. Colliers International makes no guarantees, representations or warranties of any kind, expressed or implied, regarding the information including, but not limited to, warranties of content, accuracy and reliability. Any interested party should undertake their own inquiries as to the accuracy of the information. Colliers International excludes unequivocally all inferred or implied terms, conditions and warranties arising out of this document and excludes all liability for loss and damages arising there from. This publication is the copyrighted property of Colliers International and/or its licensor(s). ©2016. All rights reserved.



CONTACT US

SEAN GLANCY, CPA (inactive)
501 978 6580
sean.glancy@colliers.com



COLLIERS INTERNATIONAL
1 Allied Dr, Suite 1500
Little Rock, AR 72202
+1 501 372 6161
www.colliers.com/arkansas

