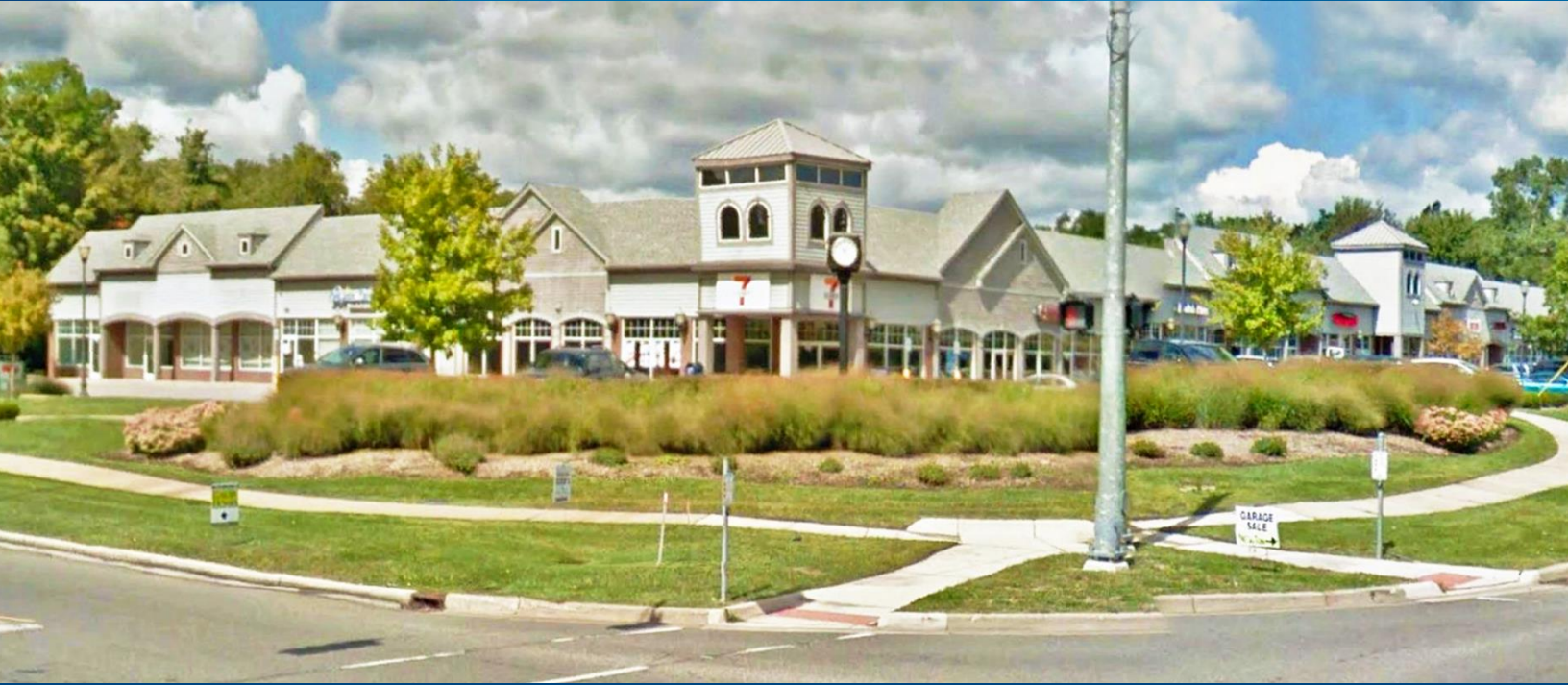


FOR LEASE > RETAIL

COMMERCE PARK

110-170 E COMMERCE ROAD | COMMERCE TOWNSHIP, MICHIGAN



TERRIFIC EXPOSURE TO COMMUTERS

> PROPERTY HIGHLIGHTS

- 1,250 – 2,533 SF Spaces Available
- Excellent Visibility from both Commerce Road & Carroll Lake Road
- Strong Incomes & Population in Beautiful Area
- Located near DMC-Huron Valley Sinai Hospital, Medical Facilities and Area Schools
- M-5, I-275, I-96 and M-59 are within Minutes from the Site

DEMOGRAPHICS	Category	1 Mile	3 Mile	5 Mile
	Population	4,087	39,651	118,123
	Average Income	\$90,327	\$106,934	\$96,088
	Households	1,550	15,065	47,447

COLLIERS INTERNATIONAL
2 Corporate Drive | Suite 300
Southfield, Michigan 48076

For More Information Call:

LOU FRANGO
PHONE 248 540 1000 EXT 1678
EMAIL lou.frango@colliers.com



colliers.com/detroit



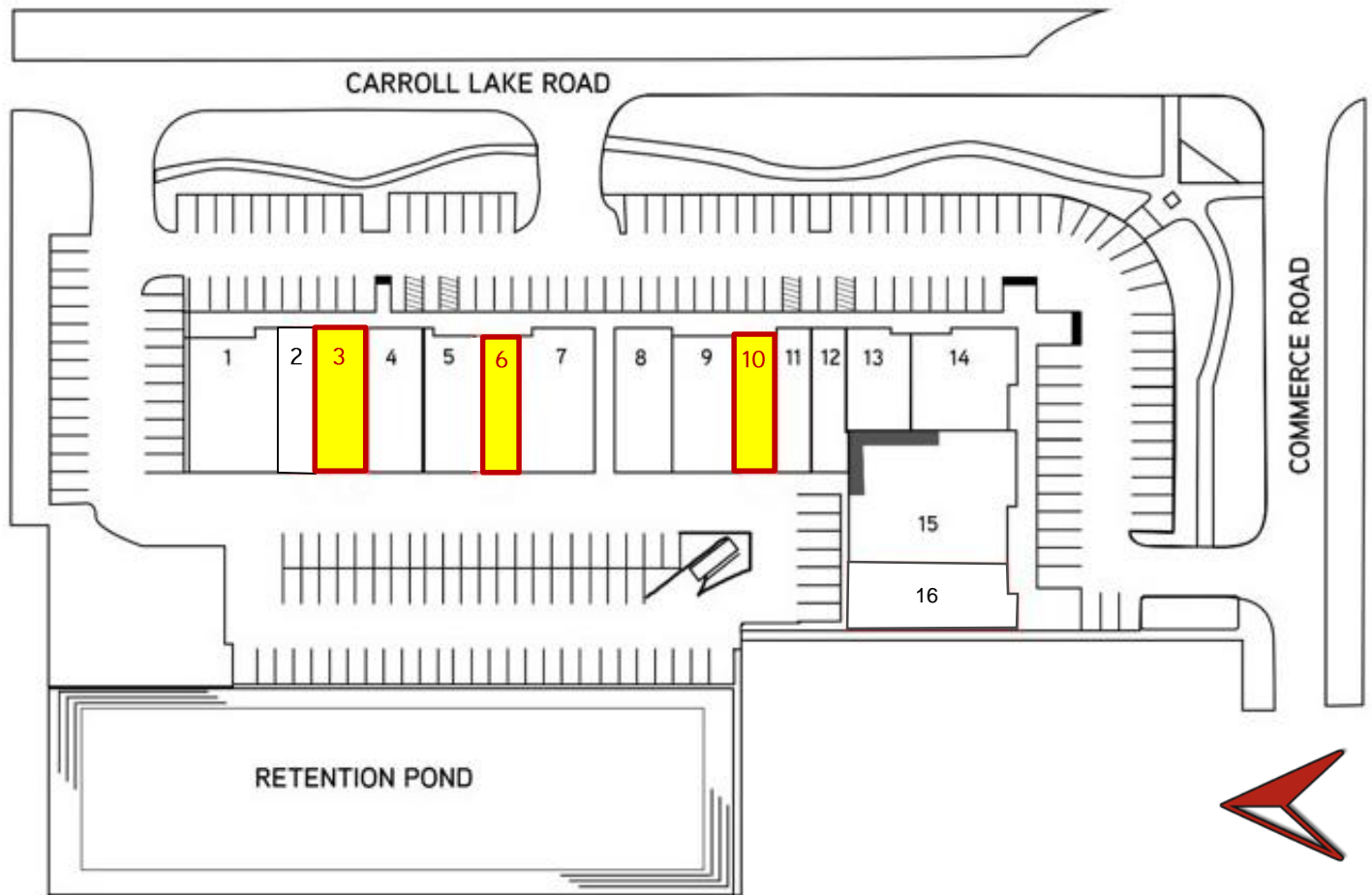
FOR LEASE > RETAIL

COMMERCE PARK

110-170 E COMMERCE ROAD | COMMERCE TOWNSHIP, MICHIGAN



> SITE PLAN



- 1 – Leo's Coney Island
- 2 – JDL Insurance & Financial
- 3 – Available 2,533 SF**
- 4 – Shears to Ya
- 5 – Le Nails
- 6 – Available 1,250 SF**
- 7 – Fiesta Fajita's Mex-Cuisine
- 8 – Quality Cleaners

- 9 – Dickey's BBQ Pit
- 10 – Available 1,460 SF**
- 11 – Benito's Pizza
- 12 – Subway
- 13 – China King
- 14 – 7-Eleven
- 15 – DaVita Dialysis
- 16 – RE/MAX

LOU FRANGO

PHONE 248 540 1000 EXT 1678

EMAIL lou.frango@colliers.com



COLLIERS INTERNATIONAL

2 Corporate Dr. | Suite 300

Southfield, Michigan 48076

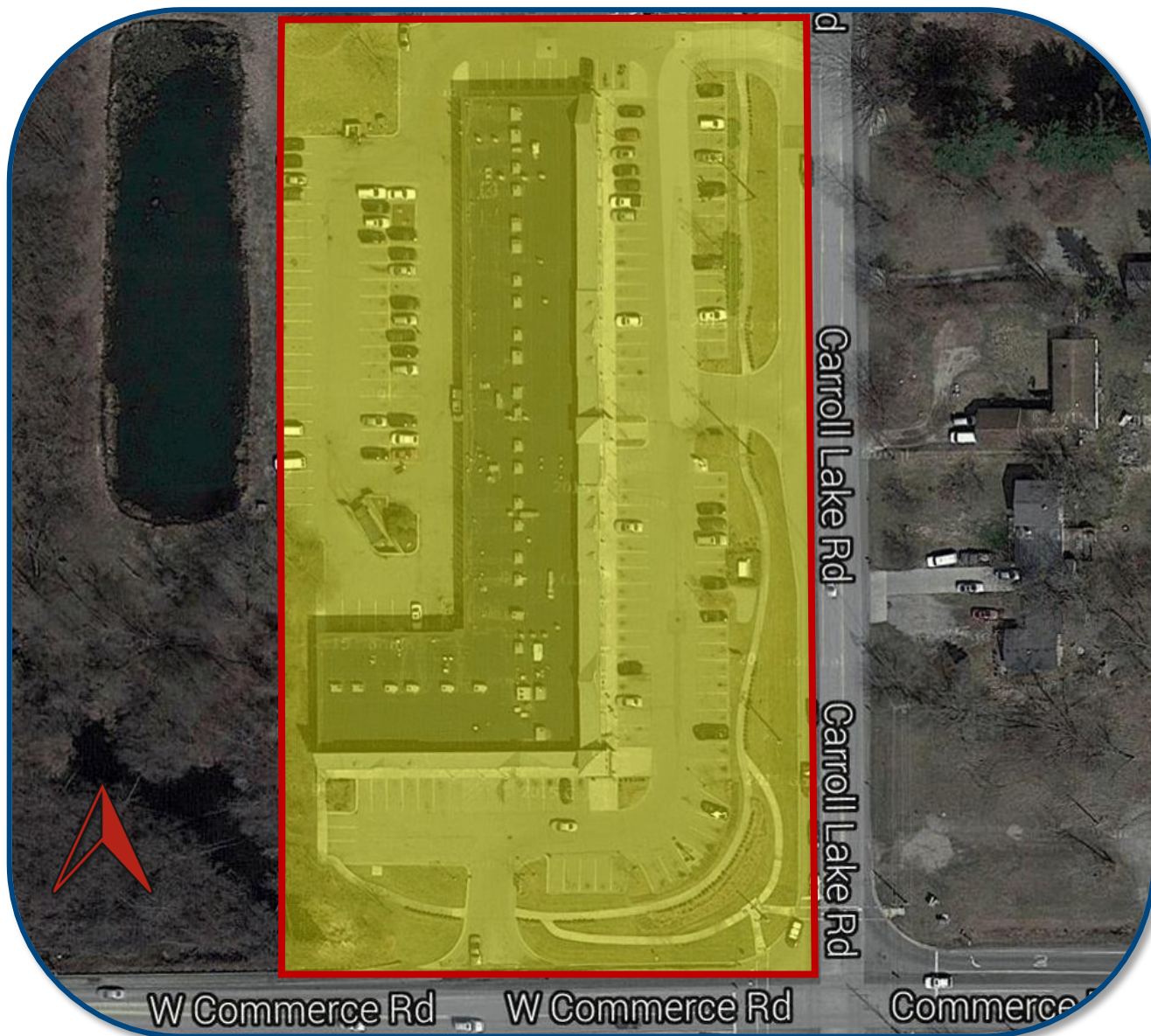
FOR LEASE > RETAIL

COMMERCE PARK

110-170 E COMMERCE ROAD | COMMERCE TOWNSHIP, MICHIGAN



> AERIAL MAP



LOU FRANGO

PHONE 248 540 1000 EXT 1678

EMAIL lou.frango@colliers.com



COLLIERS INTERNATIONAL

2 Corporate Dr. | Suite 300

Southfield, Michigan 48076

FOR LEASE > RETAIL

COMMERCE PARK

110-170 E COMMERCE ROAD | COMMERCE TOWNSHIP, MICHIGAN



> PROPERTY PHOTOS



LOU FRANGO

PHONE 248 540 1000 EXT 1678

EMAIL lou.frango@colliers.com



COLLIERS INTERNATIONAL

2 Corporate Dr. | Suite 300

Southfield, Michigan 48076

FOR LEASE > RETAIL

COMMERCE PARK

110-170 E COMMERCE ROAD | COMMERCE TOWNSHIP, MICHIGAN



> PROPERTY PHOTOS



LOU FRANGO

PHONE 248 540 1000 EXT 1678

EMAIL lou.frango@colliers.com



COLLIERS INTERNATIONAL

2 Corporate Dr. | Suite 300

Southfield, Michigan 48076

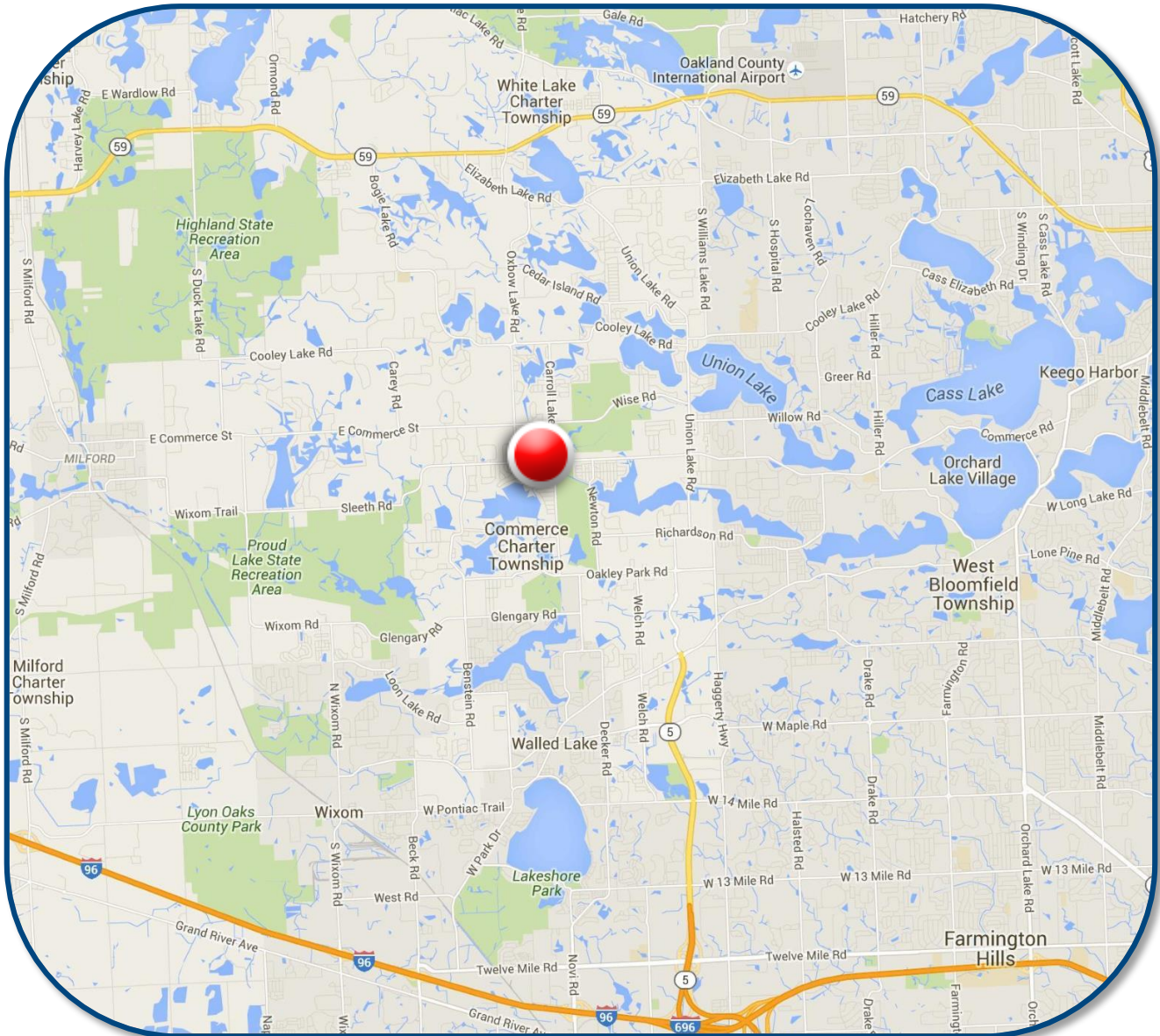
FOR LEASE > RETAIL

COMMERCE PARK

110-170 E COMMERCE ROAD | COMMERCE TOWNSHIP, MICHIGAN



> LOCATION MAP



LOU FRANGO

PHONE 248 540 1000 EXT 1678

EMAIL lou.frango@colliers.com



COLLIERS INTERNATIONAL

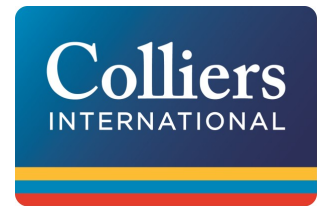
2 Corporate Dr. | Suite 300

Southfield, Michigan 48076

SUMMARY PROFILE

2000-2010 Census, 2015 Estimates with 2020 Projections

Calculated using Weighted Block Centroid from Block Groups



Lat/Lon: 42.5918/-83.4821

RS1

110 W Commerce Rd

Commerce Charter Township, MI 48382

1 mi radius

3 mi radius

5 mi radius

POPULATION	2015 Estimated Population	4,087	39,651	118,123
	2020 Projected Population	4,169	40,324	120,191
	2010 Census Population	4,102	40,098	118,011
	2000 Census Population	3,843	37,585	107,620
	Projected Annual Growth 2015 to 2020	0.4%	0.3%	0.4%
	Historical Annual Growth 2000 to 2015	0.4%	0.4%	0.7%
	2015 Median Age	38.4	40.8	40.5
HOUSEHOLDS	2015 Estimated Households	1,550	15,065	47,447
	2020 Projected Households	1,602	15,538	48,959
	2010 Census Households	1,500	14,682	45,571
	2000 Census Households	1,361	13,297	40,376
	Projected Annual Growth 2015 to 2020	0.7%	0.6%	0.6%
	Historical Annual Growth 2000 to 2015	0.9%	0.9%	1.2%
RACE AND ETHNICITY	2015 Estimated White	94.7%	93.2%	88.1%
	2015 Estimated Black or African American	1.5%	2.1%	4.9%
	2015 Estimated Asian or Pacific Islander	1.7%	2.5%	4.3%
	2015 Estimated American Indian or Native Alaskan	0.3%	0.2%	0.2%
	2015 Estimated Other Races	1.9%	2.0%	2.6%
	2015 Estimated Hispanic	2.5%	2.5%	3.2%
INCOME	2015 Estimated Average Household Income	\$90,327	\$106,934	\$96,088
	2015 Estimated Median Household Income	\$69,246	\$87,181	\$76,784
	2015 Estimated Per Capita Income	\$34,265	\$40,649	\$38,626
EDUCATION (AGE 25+)	2015 Estimated Elementary (Grade Level 0 to 8)	2.2%	2.3%	2.8%
	2015 Estimated Some High School (Grade Level 9 to 11)	9.5%	6.4%	7.3%
	2015 Estimated High School Graduate	20.6%	17.0%	17.7%
	2015 Estimated Some College	18.5%	17.5%	17.5%
	2015 Estimated Associates Degree Only	6.9%	6.9%	6.9%
	2015 Estimated Bachelors Degree Only	23.0%	24.0%	21.5%
	2015 Estimated Graduate Degree	19.2%	25.8%	26.4%
BUSINESS	2015 Estimated Total Businesses	147	1,333	3,702
	2015 Estimated Total Employees	1,059	12,077	33,269
	2015 Estimated Employee Population per Business	7.2	9.1	9.0
	2015 Estimated Residential Population per Business	27.8	29.7	31.9

This report was produced using data from private and government sources deemed to be reliable. The information herein is provided without representation or warranty.