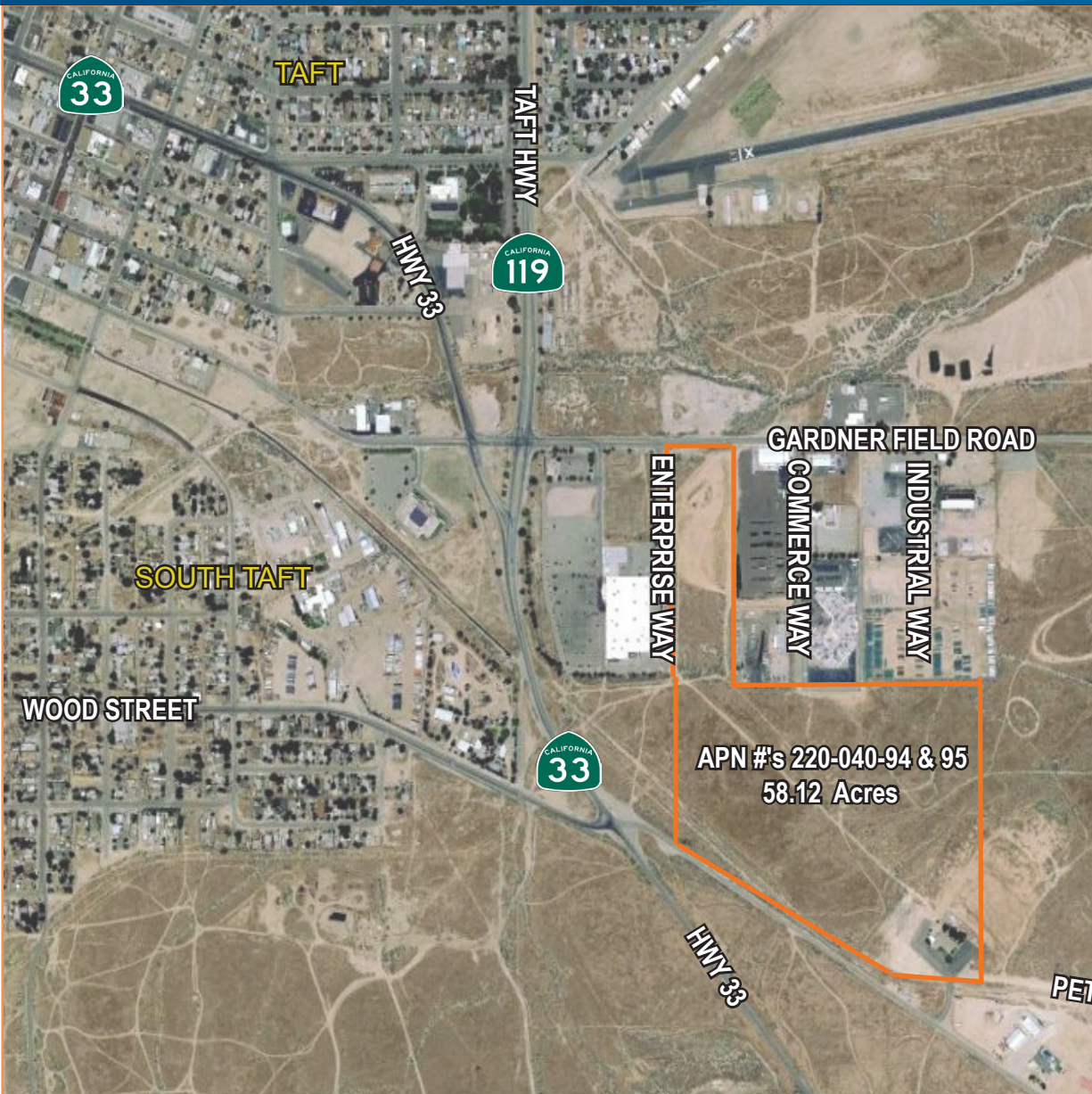


FOR SALE > 58.12 ACRES

UNDEVELOPED LAND

GARDNER FIELD ROAD & ENTERPRISE WAY, TAFT, CA



AVAILABLE:

Two (2) undeveloped parcels totaling 58.12 Acres
> APN #220-040-94 > APN #220-040-95

HIGHLIGHTS:

- Zoned Industrial
- The north portion of the site runs along Gardner Road
- The site includes the Petroleum Club Building
- Excellent Industrial Park use

SALE PRICE: \$550,000.00

GARDNER FIELD ROAD & ENTERPRISE WAY, TAFT, CA

FOR SALE > 58.12 ACRES

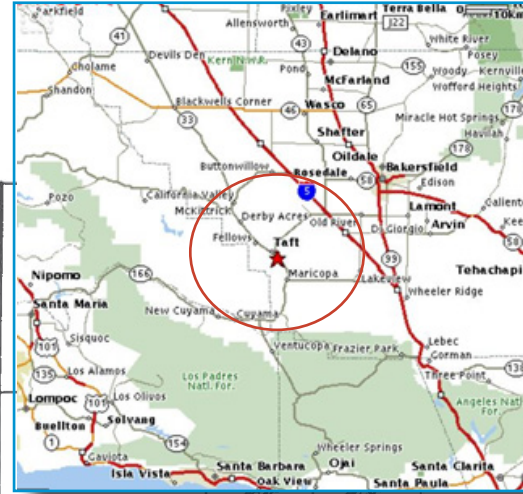
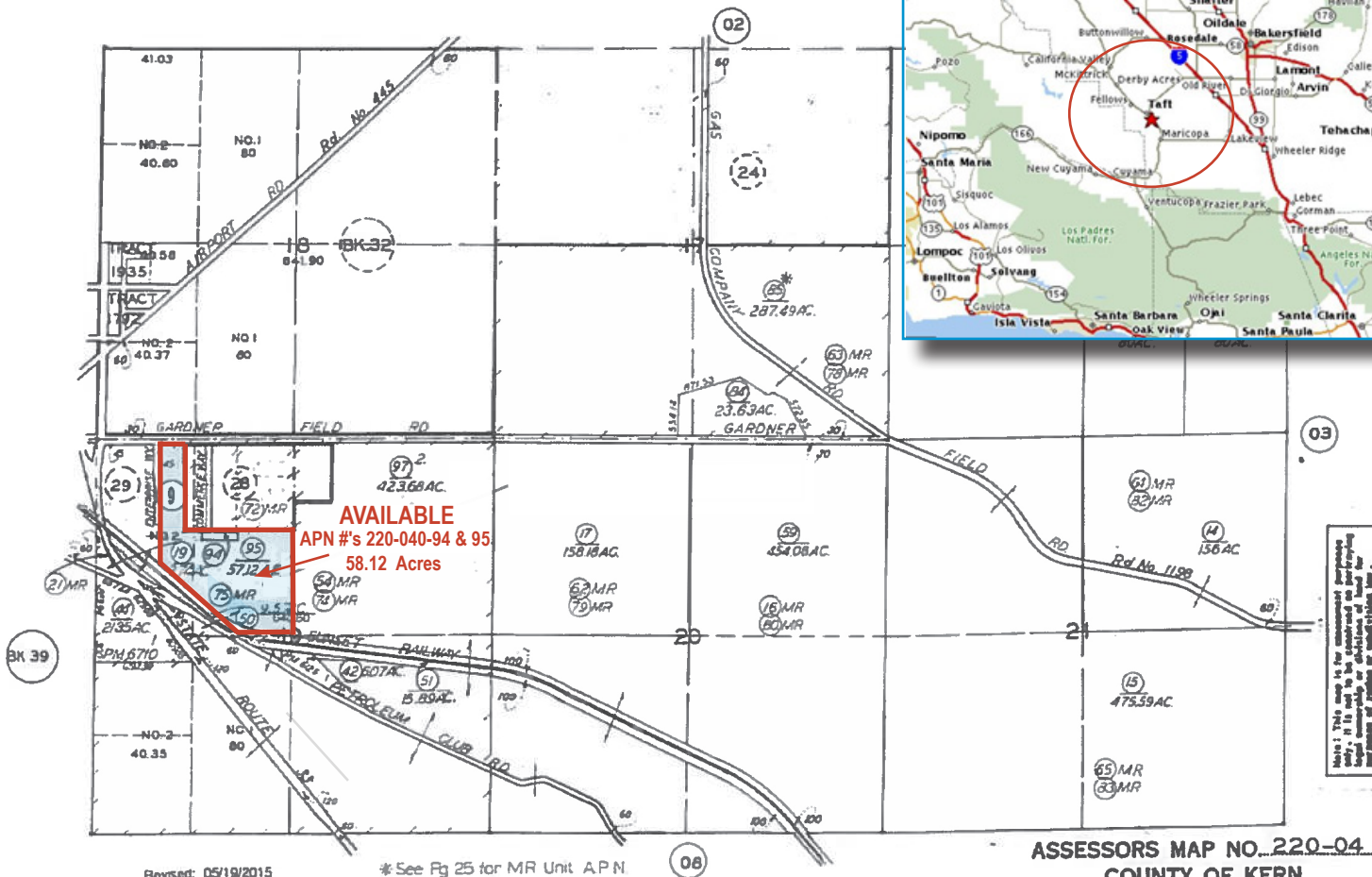
UNDEVELOPED LAND

GARDNER FIELD ROAD & ENTERPRISE WAY, TAFT, CA

TWO (2) UNDEVELOPED PARCELS TOTALING 58.12 ACRES

220-04

T. 32 S. R. 24 E.



CONTACT:

SCOTT WELLS
SR. VICE PRESIDENT
CENTRAL CALIFORNIA
LICENSE #01126196
661.631.3822
scott.wells@colliers.com

WESLEY MCDONALD
SR. VICE PRESIDENT | PRINCIPAL
CENTRAL CALIFORNIA
LICENSE #01511739
661.631.3828
wesley.mcdonald@colliers.com

OSCAR BALTAZAR
SR. VICE PRESIDENT
CENTRAL CALIFORNIA
LICENSE #01263421
661.631.3819
oscar.baltazar@colliers.com

COLLIERS INTERNATIONAL
10000 Stockdale Hwy., #102
Bakersfield, CA 93311
www.colliers.com/bakersfield



This document has been prepared by Colliers International for advertising and general information only. Colliers International makes no guarantees, representations or warranties of any kind, expressed or implied, regarding the information including, but not limited to, warranties of content, accuracy and reliability. Any interested party should undertake their own inquiries as to the accuracy of the information. Colliers International excludes unequivocally all inferred or implied terms, conditions and warranties arising out of this document and excludes all liability for loss and damages arising there from. This publication is the copyrighted property of Colliers International and/or its licensor(s). ©2013. All rights reserved.

GARDNER FIELD ROAD & ENTERPRISE WAY, TAFT, CA